

City of Phoenix Plan #: 2201401-RPRC Date: 05/24/22

DOOR SCHEDULE				
Mark	Count	DOOR SIZE		COMMENTS
		WIDTH	HEIGHT	
01.1	1	3'-6"	8'-0"	tempered
02.1	1	16'-0"	8'-0"	tempered
03.1	1	2'-8"	8'-0"	tempered
04	1	18'-0"	8'-0"	entry door - 45 min. rated w/ positive latching & gasket
101	1	2'-6"	8'-0"	
102	1	4'-0"	8'-0"	
103	1	2'-8"	8'-0"	
104	1	3'-0"	8'-0"	
105	1	3'-6"	8'-0"	
106	1	6'-0"	8'-0"	
107	1	2'-8"	8'-0"	
108	1	3'-6"	8'-0"	
109	1	2'-8"	8'-0"	
110	1	3'-0"	8'-0"	
201	1	3'-0"	8'-0"	
202	1	4'-0"	8'-0"	
203	1	3'-0"	8'-0"	
204	1	2'-8"	8'-0"	
205	1	2'-8"	8'-0"	

DOOR SCHEDULE				
Mark	Count	DOOR SIZE		COMMENTS
		WIDTH	HEIGHT	
206	1	2'-8"	8'-0"	
207	1	5'-0"	8'-0"	
208	1	2'-8"	8'-0"	
209	1	2'-8"	8'-0"	
210	1	5'-0"	8'-0"	
211	1	3'-0"	8'-0"	
212	1	2'-8"	8'-0"	
213	1	5'-0"	7'-0"	
214	1	2'-6"	8'-0"	

WINDOW SCHEDULE						
Mark	Qty.	Window Type	Width	Height	Head Height	Description
A	1	Fixed	3'-6"	6'-0"	8'-0"	
AB	2	Window-Casement-Single Left	2'-0"	6'-0"	8'-0"	
BB	1	Skylight	2'-0"	2'-0"		PER ICC ESR-108
F	3	Fixed	3'-0"	5'-0"	8'-0"	
M	6	Fixed	3'-0"	6'-0"		<varies>
P	1	Fixed	3'-0"	3'-0"	8'-0"	
P.1	1	Fixed	3'-0"	3'-0"	8'-0"	tempered
O	1	Fixed	1'-6"	6'-0"	8'-0"	
R.1	3	Fixed	1'-6"	2'-0"	8'-0"	tempered
T.1	1	Fixed	4'-0"	4'-0"	8'-0"	tempered
U	1	Fixed	4'-0"	6'-0"	8'-0"	
V	1	Fixed	5'-0"	3'-0"	11'-0"	
W	2	Fixed	3'-0"	4'-0"	8'-0"	
X	1	Fixed	5'-0"	6'-0"	8'-0"	
Y	3	Window-Casement-Single Left	3'-0"	6'-0"	8'-0"	
Z	3	Window-Casement-Single Left	3'-0"	5'-0"	8'-0"	

City of Phoenix Plan #: 2201401-RPRC Date: 05/24/22

FLOOR PLAN GENERAL NOTES:

- GAS LINES: GAS PIPING PLACED UNDER ANY CONCRETE SLAB SHALL COMPLY PER UPC 1210.1.6 REQUIREMENTS. SHALL CONFORM TO U.P.C. CHAPTER 12 FOR MATERIALS, INSTALLATION, AND TESTING.
- RANGES AND COOKTOPS: Provide a listed and approved range and/or cooktop unit installed in accordance with the listing and with the manufacturer's installation instructions.
- VERIFY AND MAINTAIN REQUIRED HORIZONTAL AND VERTICAL CLEARANCES ABOVE THE FINISHED COUNTERTOP SURFACE BEFORE ORDERING OR INSTALLING CABINETS.
- MAXIMUM STUD SPACING IS 16 INCHES ON CENTER UNLESS NOTED OTHERWISE.
- REFER TO STRUCTURAL DRAWINGS FOR LOCATIONS AND ADDITIONAL REQUIREMENTS FOR LOAD-BEARING AND SHEAR WALLS.
- TYPICAL GYPSUM SHEATHING THICKNESS IS 5/8 INCH UNLESS NOTED OTHERWISE.
- SEE DETAIL 9 ON A110 FOR STUCCO SYSTEM ASSEMBLY.

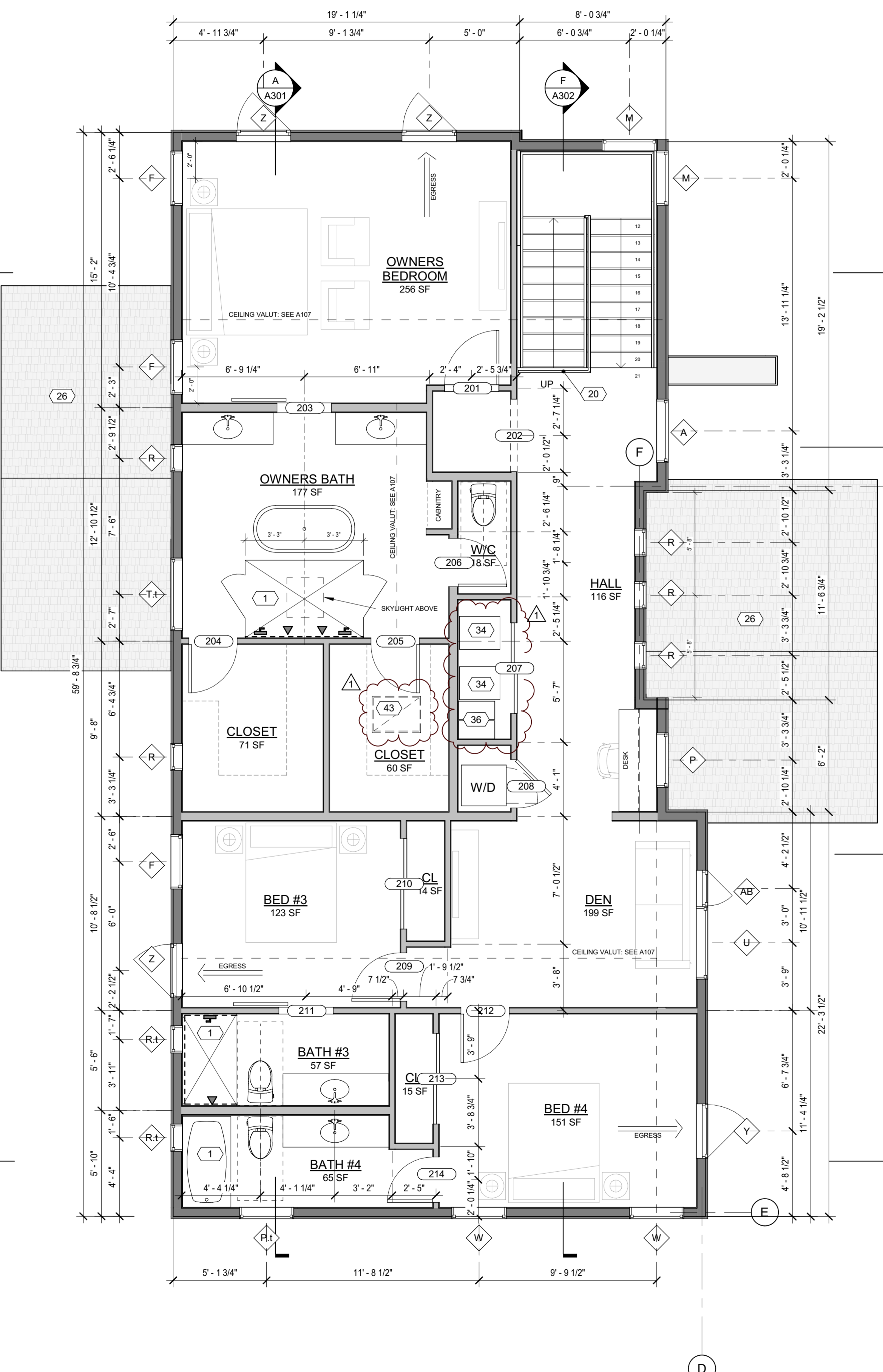
FLOOR PLAN LEGEND

NOTE: ALL WOOD FRAMED EXTERIOR WALLS TO HAVE AIR IMPERMEABLE SPRAY FOAM INSULATION-R38 MIN. TYP. ALL CEILINGS TO HAVE AIR IMPERMEABLE SPRAY FOAM INSULATION-R38 MIN. TYP.

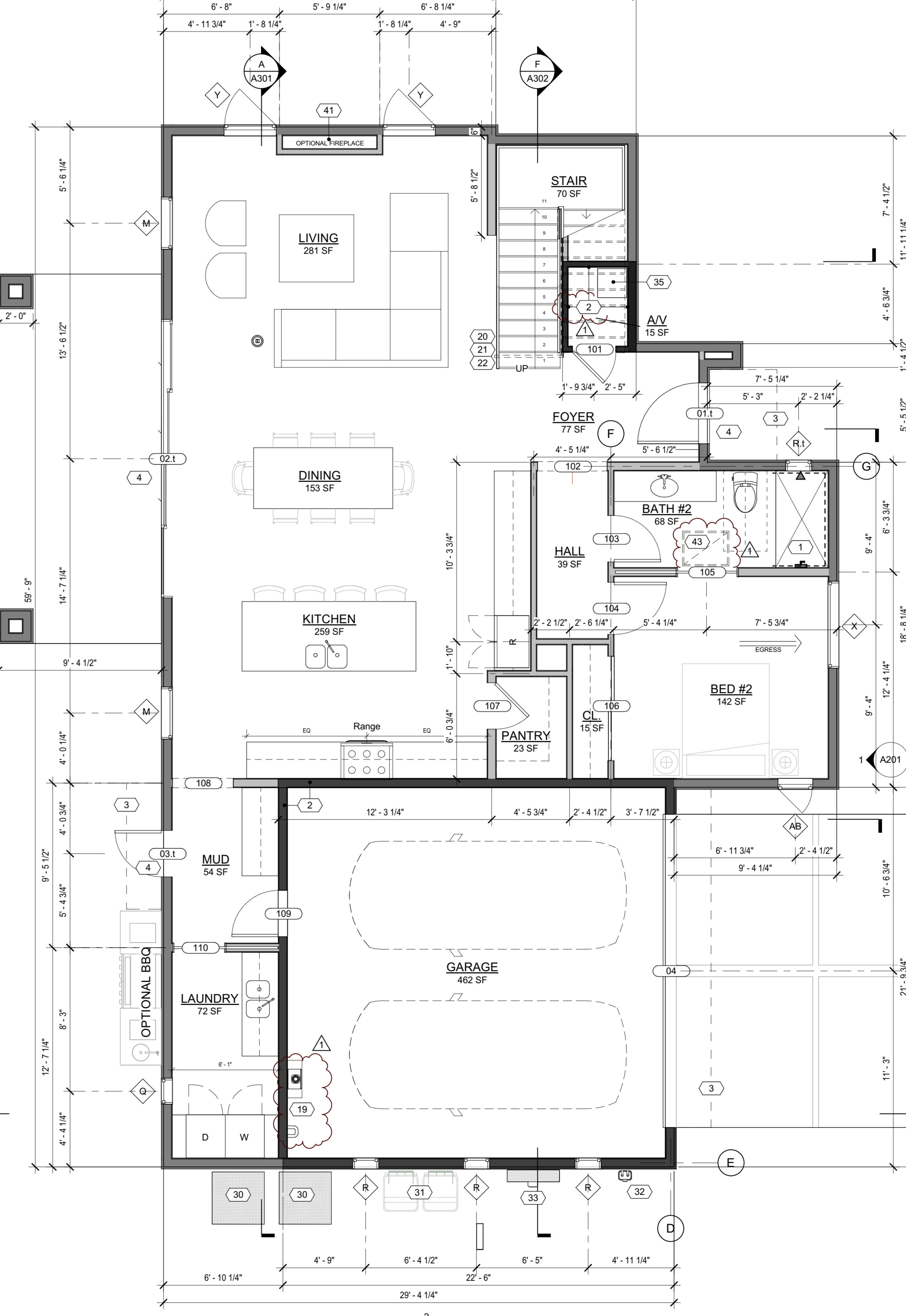
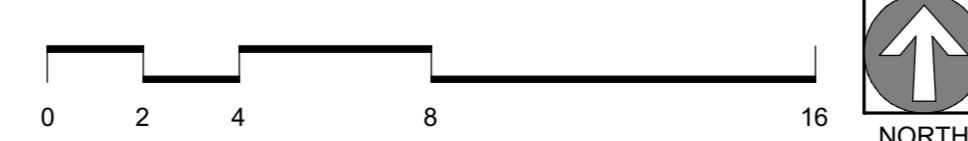
NOTE: 90% OF LAMPS IN PERMANENT FIXTURES OR 90% OF PERMANENT FIXTURES HAVE HIGH EFFICIENCY LAMPS. DOES NOT APPLY TO LOW VOLTAGE LIGHTING

KEYNOTES

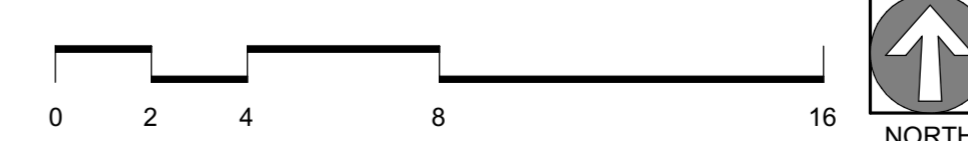
- PROVIDE TILE SURFACE AT WALLS SHOWN WITH BOLD DASHED LINE PER R708.2. TILE SURFACE SHALL EXTEND A MINIMUM OF 6 FEET ABOVE FINISHED FLOOR HEIGHT.
- PROVIDE 1-HOUR RATED WALL ASSEMBLY AS NOTED. REFER TO RATED WALL ASSEMBLY DETAIL 9 ON SHEET A502
- OVERHANG ABOVE OF FLOOR/ROOF
- ALL WEATHER LANDING SURFACE EQUAL IN WIDTH TO THE DOOR SERVED AND MIN. 36 DEEP IN DIRECTION OF TRAVEL AT ALL EXTERIOR DOORS PER IRC R311.3
- TANKLESS WATER HEATER AND SOFT WATER LOOP. TANKLESS WATER HEATER MINIMUM CLEARANCE 6 FT ABOVE FINISH FLOOR
- 36 MIN. HEIGHT GUARDRAIL W/ 4 MAX VERTICAL SPACING OF HORIZONTAL RUNGS. GUARDRAIL TO SUPPORT 200# CONCENTRATED LOAD / 50# UNIFORM LOAD
- OPEN RISERS CANNOT PERMIT THE PASSAGE OF A 4 SPHERE BETWEEN TREADS.
- PROFILE OF TREAD: RADIUS OF LEADING EDGE OF TREAD SHALL BE NO GREATER THAN 9/16". A NOSING NOT LESS THAN 3/4" BUT NOT MORE THAN 1 1/4" SHALL BE PROVIDED ON STAIRWAYS WITH SOLID RISERS.
- ASPHALT SHINGLE ROOF PER ICC-ESR REPORT ESR-1475
- HEAT PUMP - SEE MECH.
- TRASH/RECYCLING BINS
- GAS METER, SEE PLUMBING
- ELECTRICAL PANEL, SEE ELEC.
- AIR HANDLER, SEE MECH.
- AV RACK 20"x20"
- CHASE, SEE MECH.
- GAS FIREPLACE (REFER TO SHEET A503). INSTALL PER IRC R1004.1. COMBUSTION AIR PROVIDED PER IRC R408.1.1
- ATTIC ACCESS PANEL MIN. 22"x30" PER IRC R807



2 LEVEL 2
1/4" = 1'-0"



1 LEVEL 1
1/4" = 1'-0"



City of Phoenix Plan #: 2201401-RPRC Date: 05/24/22

City of Phoenix Plan #: 2201401-RPRC Date: 05/24/22

CASA AZUL LOT 12

6346 N 10th Drive Phoenix, AZ 85013

REVISION	DATE	REASON FOR ISSUE
1	04/12/22	COP Comments



FLOOR PLANS + SCHEDULES

PERMIT SET

DATE	REVISION
2022-04-13	1

PROJECT NUMBER	SHEET NUMBER
000000	A103

SCALE: As indicated