

City of Phoenix Plan #: 2107395-01-RVSN Date: 05/23/22

Mark	Qty	DOOR SIZE		COMMENTS	Show in Door/Window Schedule
		WIDTH	HEIGHT		
D1T	1	3'-6"	8'-0"	FRONT DOOR	Yes
O2T	1	6'-0"	8'-0"	SLIDER	Yes
O3	1	18'-0"	8'-0"	GARAGE DOOR	Yes
O4T	1	2'-8"	8'-0"	TEMPERED	Yes
O5T	1	16'-0"	8'-0"	SLIDER, TEMPERED	Yes
O6T	1	8'-0"	8'-0"	SLIDER, TEMPERED	Yes
O7	1	3'-0"	8'-0"	GARAGE ENTRY DOOR, 45 MIN. FIRE RATED DOOR W/ POSITIVE LATCHING	Yes
10	1	3'-0"	8'-0"		
11	1	2'-6"	8'-0"		
12	1	4'-0"	8'-0"		
13	1	3'-6"	8'-0"		
14	1	2'-8"	8'-0"		
15	1	2'-8"	8'-0"		
16	1	3'-0"	8'-0"		
17	1	6'-0"	8'-0"		
18	1	2'-8"	8'-0"		
19	1	2'-6"	8'-0"		
20	1	2'-8"	8'-0"		
21	1	2'-6"	8'-0"		
22	1	2'-8"	8'-0"		
23	1	6'-0"	8'-0"		
24	1	6'-0"	8'-0"		
25	1	2'-8"	8'-0"		
26	1	3'-0"	8'-0"		
27	1	4'-0"	8'-0"	BARN DOOR	
28	1	2'-8"	8'-0"		
29	1	2'-6"	8'-0"		
30T	1	2'-2"	10'-0"	SHOWER DOOR, TEMPERED	Yes

Grand total: 28

Mark	Qty	Window Type	Width	Height	Head Height	Comments	Show in Door/Window Schedule
B	1	Window-Casement-Single_Left	3'-0"	5'-0"	8'-0"		Yes
BT	1	Window-Casement-Single_Left	3'-0"	5'-0"	8'-0"	TEMPERED	Yes
C	3	Fixed	1'-6"	2'-0"	8'-0"		Yes
D	2	Fixed	2'-6"	4'-0"	8'-0"		Yes
DZ	1	Fixed	2'-0"	2'-0"	8'-0"		Yes
E	3	Fixed	5'-0"	6'-0"	8'-0"		Yes
F	1	Window-Casement-Single_Left	3'-0"	6'-0"	8'-0"		Yes
G	2	Fixed	3'-0"	6'-0"	8'-0"		Yes
H	1	Fixed	5'-0"	2'-0"	8'-0"		Yes
J	2	Window-Casement-Single_Left	3'-0"	5'-0"	8'-0"		Yes
W	1	Fixed	3'-0"	2'-0"	8'-0"	TEMPERED	Yes

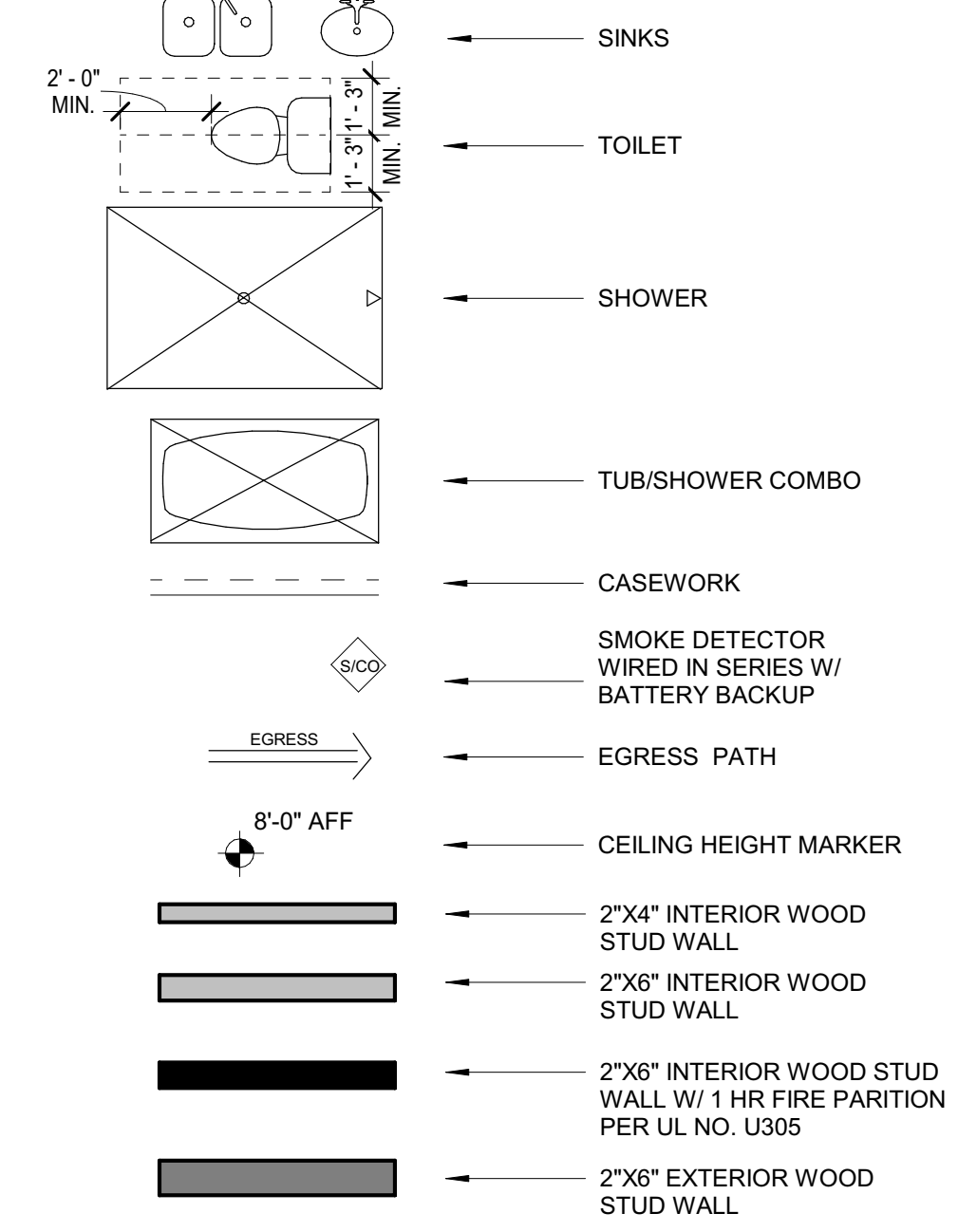
Grand total: 19

SEE A103B FOR OPTION B SCHEDULES

FLOOR PLAN GENERAL NOTES:

- GAS LINES:**
GAS PIPING PLACED UNDER ANY CONCRETE SLAB SHALL COMPLY PER UPC 1210.1.6 REQUIREMENTS. SHALL CONFORM TO U.P.C. CHAPTER 12 FOR MATERIALS, INSTALLATION, AND TESTING.
- RANGES AND COOKTOPS:**
Provide a listed and approved range and/or cooktop unit installed in accordance with the listing and with the manufacturer's installation instructions.
- VERIFY AND MAINTAIN REQUIRED HORIZONTAL AND VERTICAL CLEARANCES ABOVE THE FINISHED COUNTERTOP SURFACE BEFORE ORDERING OR INSTALLING CABINETS.**
- MAXIMUM STUD SPACING IS 16 INCHES ON CENTER UNLESS NOTED OTHERWISE**
- REFER TO STRUCTURAL DRAWINGS FOR LOCATIONS AND ADDITIONAL REQUIREMENTS FOR LOAD-BEARING AND SHEAR WALLS**
- TYPICAL GYPSUM SHEATHING THICKNESS IS 5/8 INCH UNLESS NOTED OTHERWISE**
- SEE DETAIL 9 ON A110 FOR STUCCO SYSTEM ASSEMBLY**

FLOOR PLAN LEGEND

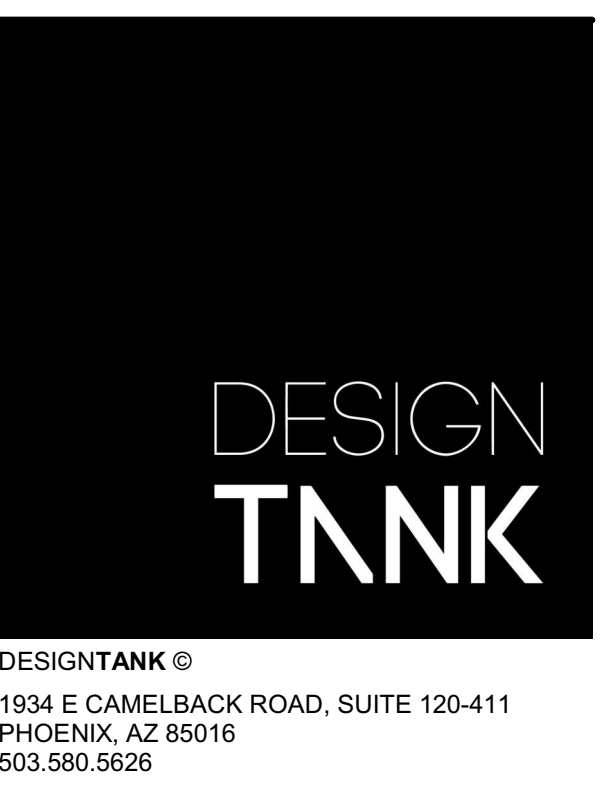
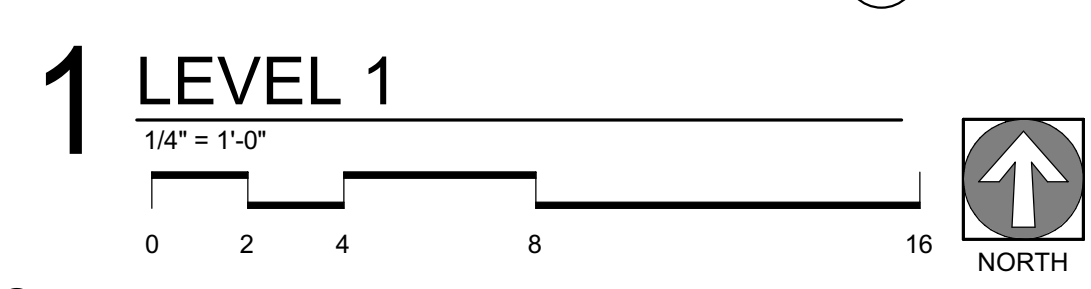
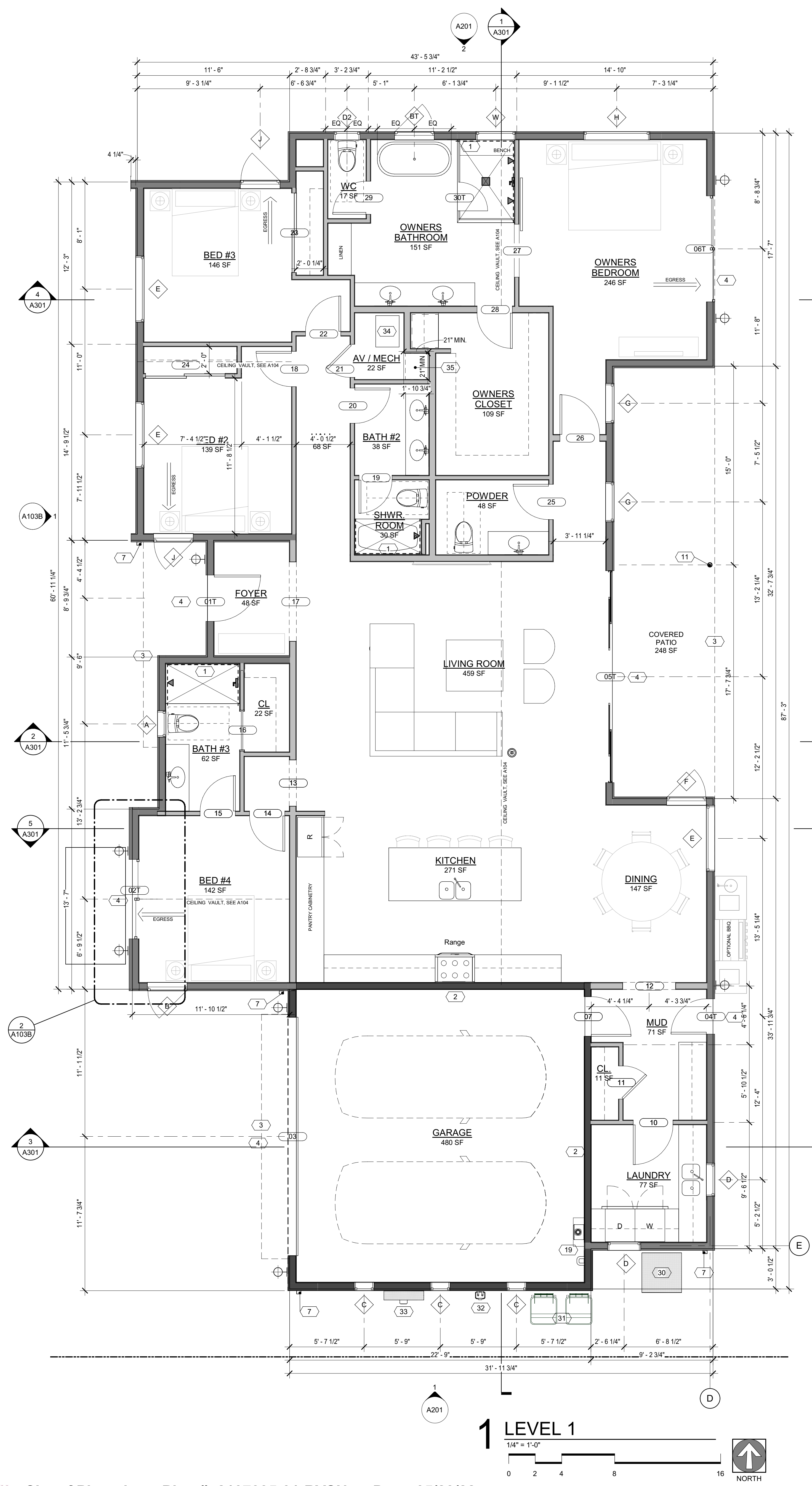


NOTE:
ALL WOOD FRAMED EXTERIOR WALLS TO HAVE AIR IMPERMEABLE SPRAY FOAM INSULATION R-21 MIN. TYP.

NOTE:
90% OF LAMPS IN PERMANENT FIXTURES OR 90% OF PERMANENT FIXTURES HAVE HIGH EFFICACY LAMPS. DOES NOT APPLY TO LOW VOLTAGE LIGHTING

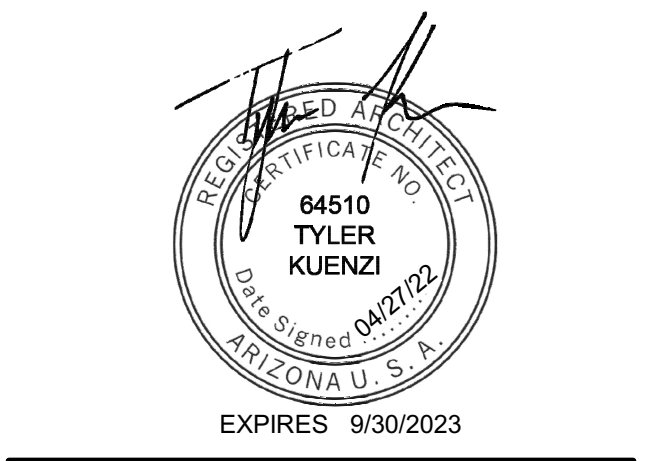
FLOOR PLAN KEYNOTES

- PROVIDE TILE SURFACE AT WALLS SHOWN WITH BOLD DASHED LINE PER IRC R708.2. TILE SURFACE SHALL EXTEND A MINIMUM OF 6 FEET ABOVE FINISHED FLOOR HEIGHT.
- PROVIDE 1-RATED WALL ASSEMBLY AS NOTED. REFER TO RATED WALL ASSEMBLY DETAIL 9 ON SHEET A502.
- OVERHANG OF ROOF FROM ABOVE
- ALL WEATHER LANDING SURFACE EQUAL IN WIDTH TO THE DOOR SERVED AND MIN. 36 DEEP IN DIRECTION OF TRAVEL AT ALL EXTERIOR DOORS PER IRC R311.3
- METAL ROOF SCUPPER W/ DOWNSPOUT
- BEAM PER STRUCTURAL
- COLUMN PER STRUCTURAL
- TANKLESS WATER HEATER AND SOFT WATER LOOP. TANKLESS WATER HEATER MINIMUM CLEARANCE 6 FT ABOVE FINISH FLOOR.
- HEAT PUMP - SEE MECH.
- TRASH/RECYCLING BINS
- GAS METER, SEE PLUMBING
- ELECTRICAL PANEL, SEE ELEC.
- AIR HANDLER, SEE MECH.
- AV RACK 20"X20"



CASA AZUL SINGLE STORY

REVISION	DATE	REASON FOR ISSUE
1	3/29/2022	Window Rev
1	4/27/2022	PLAN UPDATES



FLOOR PLANS + SCHEDULES

PERMIT SET

DATE 2022-0427	REVISION 1
PROJECT NUMBER 000000	SHEET NUMBER A103
SCALE As indicated	