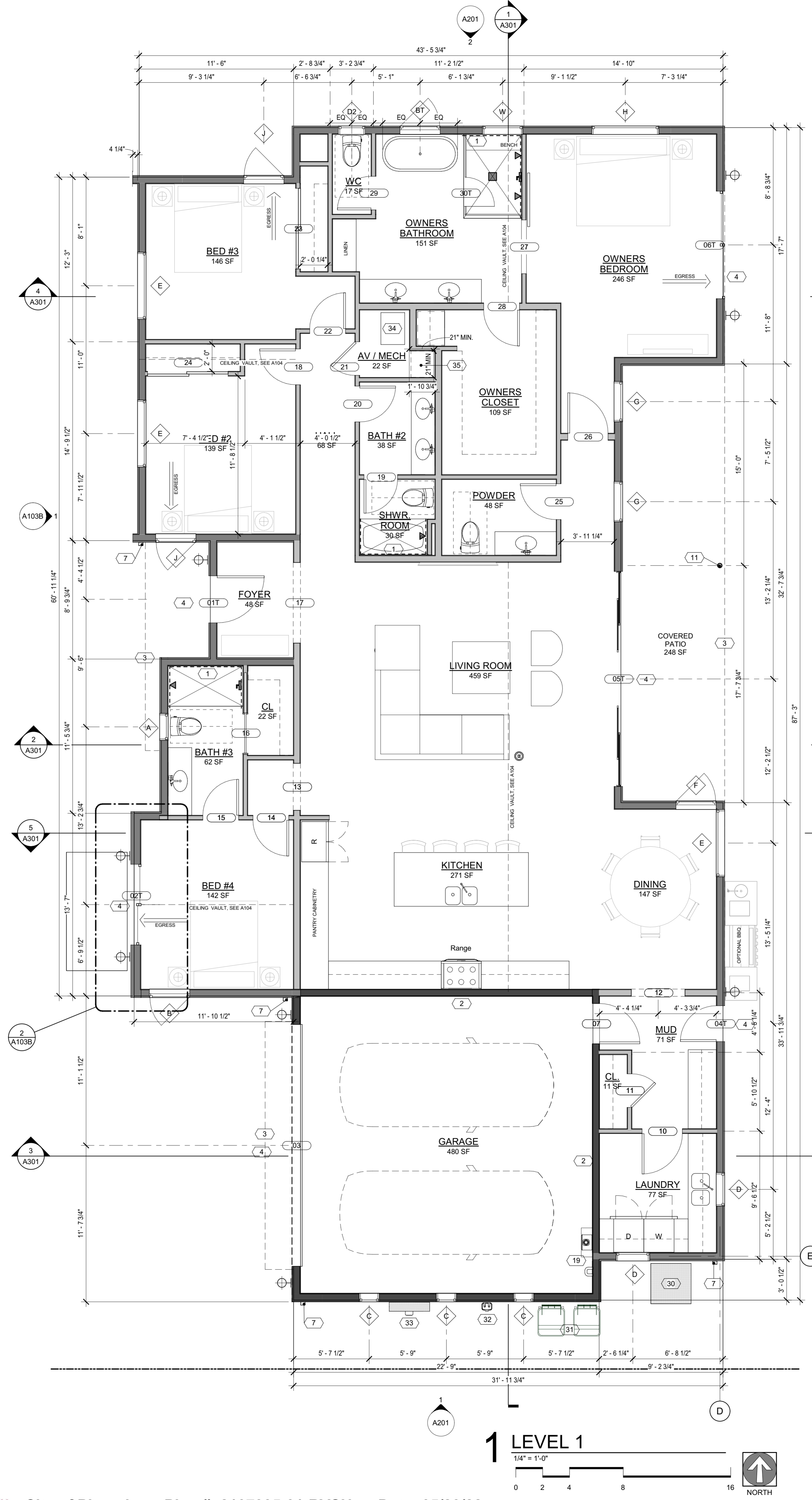


C:\Users\Fran\Documents\Design\TANK\Documents...\_Tyler\_Kuenzi\_64510\_Active\_Projects\Casa\_Azul\BIM\Standard\_Single\_Story.dwg 2022.04.26 Casa\_Azul\_Single\_Story.rvt

DOOR SCHEDULE				
Mark	Count	DOOR SIZE		COMMENTS
		WIDTH	HEIGHT	
01T	1	3'-6"	8'-0"	FRONT DOOR
02T	1	6'-0"	8'-0"	SLIDER
03	1	18'-0"	8'-0"	GARAGE DOOR
04T	1	2'-8"	8'-0"	TEMPERED
05T	1	16'-0"	8'-0"	SLIDER, TEMPERED
06T	1	8'-0"	8'-0"	SLIDER, TEMPERED
07	1	3'-0"	8'-0"	GARAGE ENTRY DOOR, 45 MIN. FIRE RATED DOOR W/ POSITIVE LATCHING
10	1	3'-0"	8'-0"	
11	1	2'-6"	8'-0"	
12	1	4'-0"	8'-0"	
13	1	3'-6"	8'-0"	
14	1	2'-8"	8'-0"	
15	1	2'-8"	8'-0"	
16	1	3'-0"	8'-0"	
17	1	6'-0"	8'-0"	
18	1	2'-8"	8'-0"	
19	1	2'-6"	8'-0"	
20	1	2'-8"	8'-0"	
21	1	2'-6"	8'-0"	
22	1	2'-8"	8'-0"	
23	1	6'-0"	8'-0"	
24	1	6'-0"	8'-0"	
25	1	2'-8"	8'-0"	
26	1	3'-0"	8'-0"	
27	1	4'-0"	8'-0"	BARN DOOR
28	1	2'-8"	8'-0"	
29	1	2'-6"	8'-0"	
30T	1	2'-2"	10'-0"	SHOWER DOOR, TEMPERED
Grand total: 28				

WINDOW SCHEDULE						
Mark	Qty	Window Type	Width	Height	Head Height	Show in Door/Window Schedule
A	1	Fixed	2'-0"	3'-0"	8'-0"	Yes
B	1	Window-Casement-Single_Left	3'-0"	5'-0"	8'-0"	Yes
BT	1	Window-Casement-Single_Left	3'-0"	5'-0"	8'-0"	TEMPERED Yes
C	3	Fixed	1'-6"	2'-0"	8'-0"	Yes
D	2	Fixed	2'-6"	4'-0"	8'-0"	Yes
DZ	1	Fixed	2'-0"	2'-0"	8'-0"	Yes
E	3	Fixed	5'-0"	6'-0"	8'-0"	Yes
F	1	Window-Casement-Single_Left	3'-0"	6'-0"	8'-0"	Yes
G	2	Fixed	3'-0"	6'-0"	8'-0"	Yes
H	1	Fixed	5'-0"	2'-0"	8'-0"	Yes
J	2	Window-Casement-Single_Left	3'-0"	5'-0"	8'-0"	Yes
W	1	Fixed	3'-0"	2'-0"	8'-0"	TEMPERED Yes
Grand total: 19						

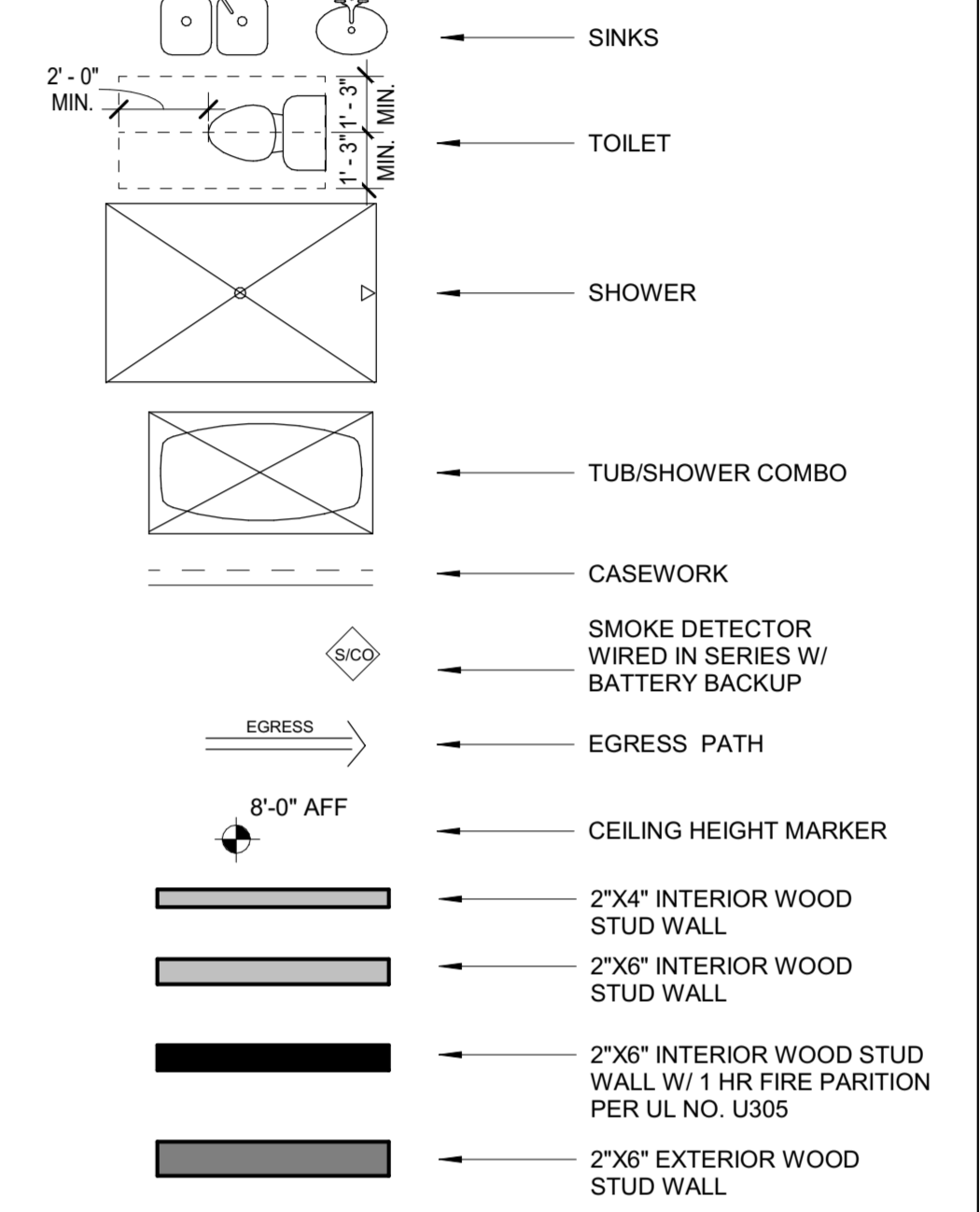
SEE A103B FOR OPTION B SCHEDULES



**FLOOR PLAN GENERAL NOTES:**

1. GAS LINES: GAS PIPING PLACED UNDER ANY CONCRETE SLAB SHALL COMPLY PER UPC 1210.1.6 REQUIREMENTS. SHALL CONFORM TO U.P.C. CHAPTER 12 FOR MATERIALS, INSTALLATION, AND TESTING.
2. RANGES AND COOKTOPS: Provide a listed and approved range and/or cooktop unit installed in accordance with the listing and with the manufacturer's installation instructions.
3. VERIFY AND MAINTAIN REQUIRED HORIZONTAL AND VERTICAL CLEARANCES ABOVE THE FINISHED COUNTERTOP SURFACE BEFORE ORDERING OR INSTALLING CABINETS.
4. MAXIMUM STUD SPACING IS 16 INCHES ON CENTER UNLESS NOTED OTHERWISE
5. REFER TO STRUCTURAL DRAWINGS FOR LOCATIONS AND ADDITIONAL REQUIREMENTS FOR LOAD-BEARING AND SHEAR WALLS
6. TYPICAL GYPSUM SHEATHING THICKNESS IS 5/8 INCH UNLESS NOTED OTHERWISE
7. SEE DETAIL 9 ON A110 FOR STUCCO SYSTEM ASSEMBLY

**FLOOR PLAN LEGEND**



**NOTE:**  
ALL WOOD FRAMED EXTERIOR WALLS TO HAVE AIR IMPERMEABLE SPRAY FOAM INSULATION R-21 MIN. TYP.  
ALL CEILINGS TO HAVE AIR IMPERMEABLE SPRAY FOAM INSULATION R-38 MIN. TYP.

**NOTE:**  
90% OF LAMPS IN PERMANENT FIXTURES OR 90% OF PERMANENT FIXTURES HAVE HIGH EFFICACY LAMPS. DOES NOT APPLY TO LOW VOLTAGE LIGHTING

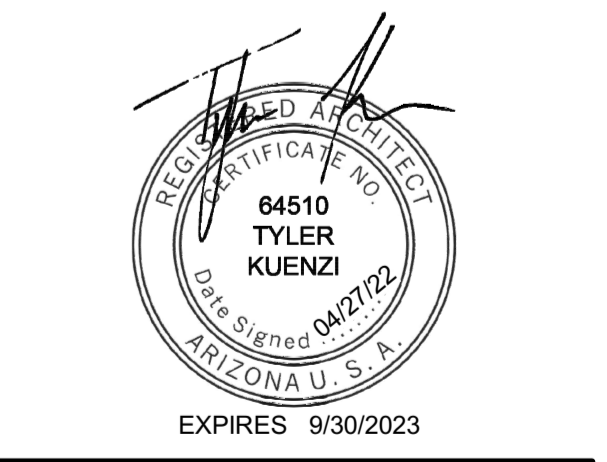
**FLOOR PLAN KEYNOTES**

- 1 - PROVIDE TILE SURFACE AT WALLS SHOWN WITH BOLD DASHED LINE PER IRC R708.2. TILE SURFACE SHALL EXTEND A MINIMUM OF 6 FEET ABOVE FINISHED FLOOR HEIGHT.
- 2 - PROVIDE 1-RATED WALL ASSEMBLY AS NOTED. REFER TO RATED WALL ASSEMBLY DETAIL 9 ON SHEET A502.
- 3 - OVERHANG OF ROOF FROM ABOVE
- 4 - ALL WEATHER LANDING SURFACE EQUAL IN WIDTH TO THE DOOR SERVED AND MIN. 36 DEEP IN DIRECTION OF TRAVEL AT ALL EXTERIOR DOORS PER IRC R311.3
- 7 - METAL ROOF SCUPPER W/ DOWNSPOUT
- 9 - BEAM PER STRUCTURAL
- 11 - COLUMN PER STRUCTURAL
- 19 - TANKLESS WATER HEATER AND SOFT WATER LOOP. TANKLESS WATER HEATER MINIMUM CLEARANCE 6 FT ABOVE FINISH FLOOR.
- 30 - HEAT PUMP - SEE MECH.
- 31 - TRASH/RECYCLING BINS
- 32 - GAS METER, SEE PLUMBING
- 33 - ELECTRICAL PANEL, SEE ELEC.
- 34 - AIR HANDLER, SEE MECH.
- 35 - AV RACK 20"X20"



**CASA AZUL SINGLE STORY**

REVISION	DATE	REASON FOR ISSUE
1	3/29/2022	Window Rev
1	4/27/2022	PLAN UPDATES



**FLOOR PLANS + SCHEDULES**

**PERMIT SET**

DATE 2022-0427	REVISION 1
PROJECT NUMBER 000000	SHEET NUMBER A103
SCALE As indicated	