

City of Phoenix Plan #: 2201130-RPRC Date: 06/03/22

DOOR SCHEDULE				
Mark	Count	DOOR SIZE		COMMENTS
		WIDTH	HEIGHT	
01.1	1	4'-0"	8'-0"	tempered
02.1	1	7'-0"	8'-0"	tempered
03.1	1	16'-0"	8'-0"	tempered
04	1	18'-0"	8'-0"	garage entry door - 45 min. rated w/ positive latching & gasket
101.1	1	5'-8"	8'-0"	tempered
102	1	5'-0"	8'-0"	
103	1	3'-0"	8'-0"	
104	1	2'-6"	8'-0"	
105	1	2'-6"	8'-0"	
106	1	2'-6"	8'-0"	
107	1	3'-0"	8'-0"	
108	1	3'-0"	8'-0"	
109	1	3'-0"	8'-0"	Garage entry door - 45 min. rated self closing door with gasket
201	1	3'-0"	8'-0"	
202	1	3'-0"	8'-0"	
203	1	3'-0"	8'-0"	
204	1	3'-0"	8'-0"	
205	1	3'-0"	8'-0"	
206	1	6'-0"	7'-0"	
207	1	2'-6"	8'-0"	
208	1	2'-6"	8'-0"	
209	1	2'-8"	8'-0"	
210	1	6'-0"	8'-0"	
211	1	2'-8"	8'-0"	
212	1	5'-0"	7'-0"	
213	1	2'-6"	8'-0"	

WINDOW SCHEDULE					
Mark	Qty	Window Type	Width	Height	Description
CC.1	1	Fixed	1'-6"	3'-0"	7'-0" tempered
DD	1	Fixed	2'-0"	5'-0"	8'-0" tempered
EE	2	Fixed	3'-0"	8'-0"	8'-0" tempered
F	3	Fixed	3'-0"	5'-0"	8'-0" tempered
F.1	1	Fixed	3'-0"	5'-0"	8'-0" tempered
FF	1	Window-Casement-Single_Left	2'-0"	2'-6"	6'-6" tempered
GG	1	Window-Casement-Single_Left	2'-0"	5'-0"	8'-0" tempered
HH	2	Fixed	2'-0"	4'-6"	7'-6" tempered
II	1	Fixed	2'-6"	4'-0"	8'-0" tempered
J	8	Fixed	2'-0"	3'-0"	<varies> tempered
M	2	Fixed	3'-0"	6'-0"	<varies> tempered
R.1	3	Fixed	2'-0"	5'-0"	<varies> tempered
T.1	1	Fixed	4'-0"	4'-0"	7'-6" tempered
Z	9	Window-Casement-Single_Left	3'-0"	5'-0"	<varies> tempered

**FLOOR PLAN GENERAL NOTES:**

- GAS LINES:**  
GAS PIPING PLACED UNDER ANY CONCRETE SLAB SHALL COMPLY PER UPC 1210.1.6 REQUIREMENTS. SHALL CONFORM TO U.P.C. CHAPTER 12 FOR MATERIALS, INSTALLATION, AND TESTING.
- RANGES AND COOKTOPS:**  
Provide a listed and approved range and/or cooktop unit installed in accordance with the listing and with the manufacturer's installation instructions.
- VERIFY AND MAINTAIN REQUIRED HORIZONTAL AND VERTICAL CLEARANCES ABOVE THE FINISHED COUNTERTOP SURFACE BEFORE ORDERING OR INSTALLING CABINETS.**
- MAXIMUM STUD SPACING IS 16 INCHES ON CENTER UNLESS NOTED OTHERWISE.**
- REFER TO STRUCTURAL DRAWINGS FOR LOCATIONS AND ADDITIONAL REQUIREMENTS FOR LOAD-BEARING AND SHEAR WALLS.**
- TYPICAL GYPSUM SHEATHING THICKNESS IS 5/8 INCH UNLESS NOTED OTHERWISE.**
- SEE DETAIL 9 ON A110 FOR STUCCO SYSTEM ASSEMBLY.**



**FLOOR PLAN LEGEND**

- SINKS
- TOILET
- SHOWER
- TUB/SHOWER COMBO
- CASEWORK
- EGRESS PATH
- CEILING HEIGHT MARKER
- 2"x4" INTERIOR WOOD STUD WALL
- 2"x6" INTERIOR WOOD STUD WALL
- 2"x6" EXTERIOR WOOD STUD WALL

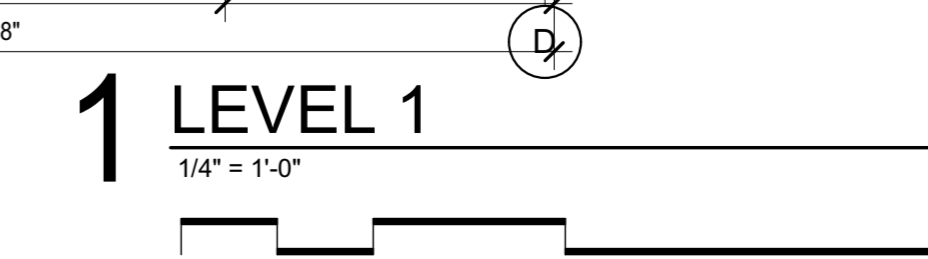
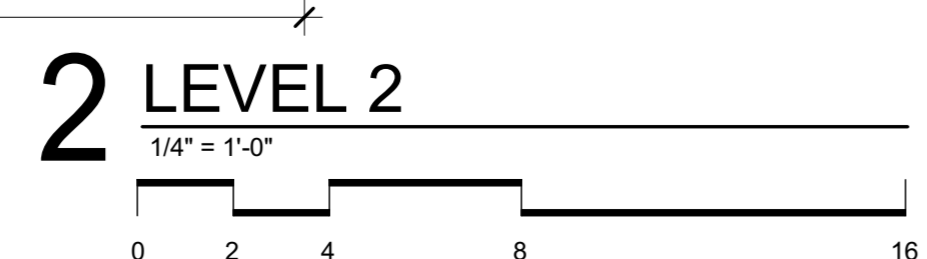
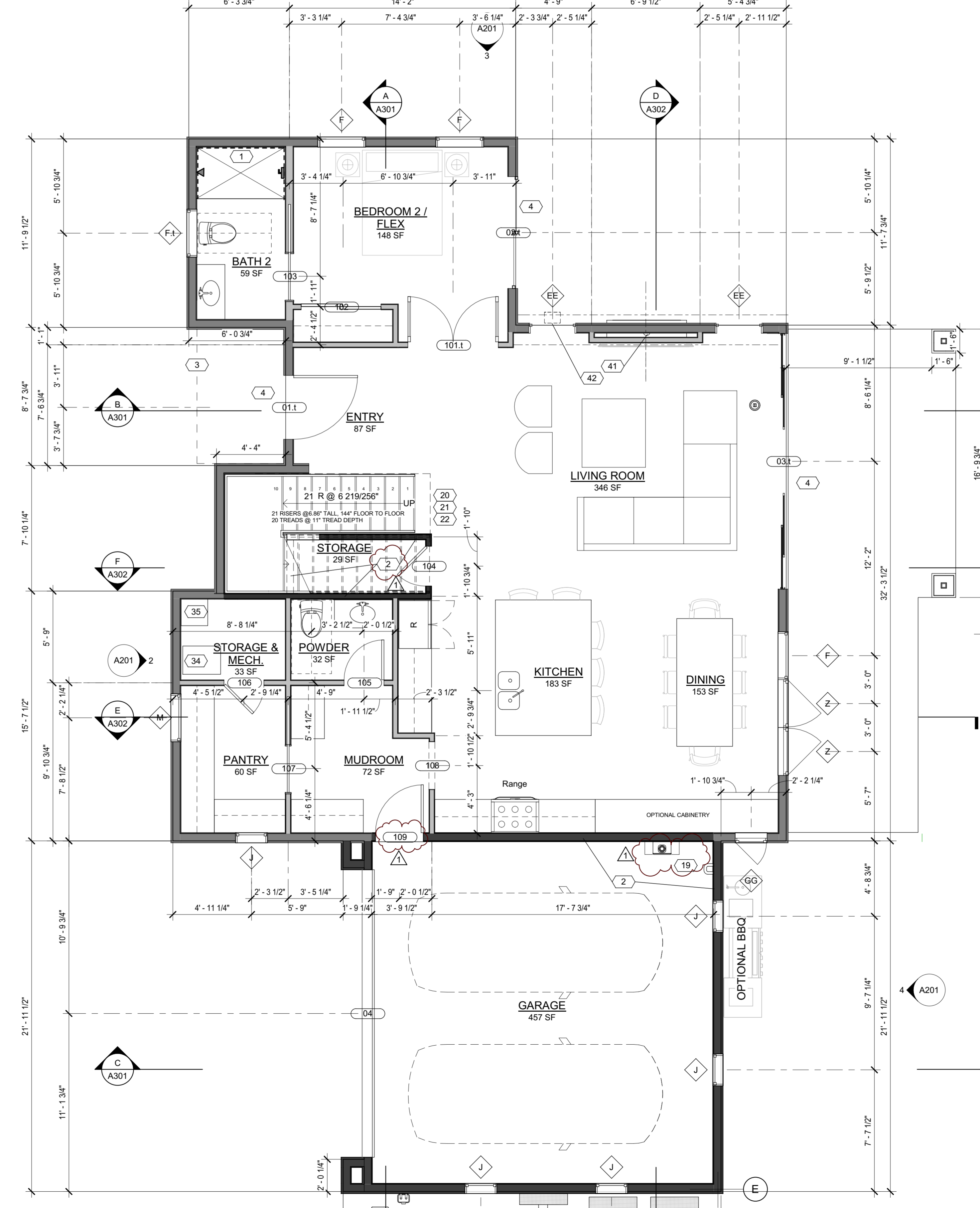
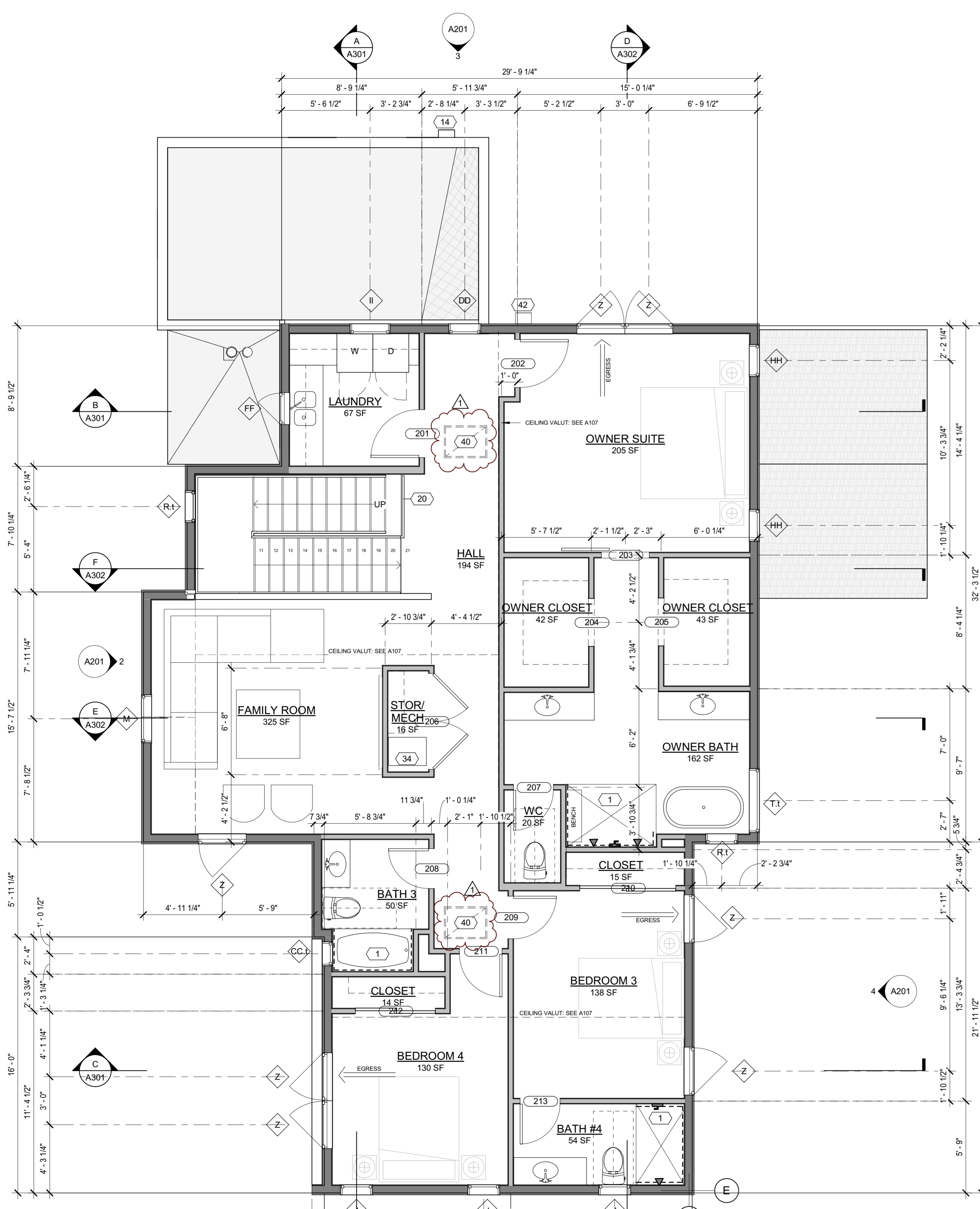
**NOTE:** ALL WOOD FRAMED EXTERIOR WALLS TO HAVE AIR IMPERMEABLE SPRAY FOAM INSULATION R-21 MIN. TYP.

**NOTE:** ALL CEILINGS TO HAVE AIR IMPERMEABLE SPRAY FOAM INSULATION R-38 MIN. TYP.

**NOTE:** 90% OF LAMPS IN PERMANENT FIXTURES OR 90% OF PERMANENT FIXTURES HAVE HIGH EFFICACY LAMPS. DOES NOT APPLY TO LOW VOLTAGE LIGHTING

**KEYNOTES**

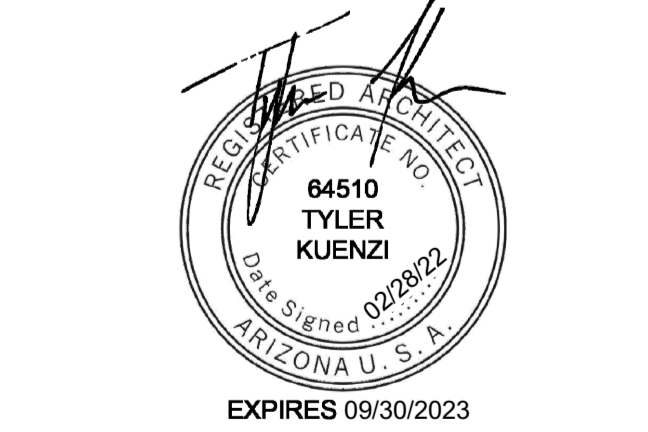
- PROVIDE TILE SURFACE AT WALLS SHOWN WITH BOLD DASHED LINE PER IRC R708.2. TILE SURFACE SHALL EXTEND A MINIMUM OF 6 FEET ABOVE FINISHED FLOOR HEIGHT.
- PROVIDE 1-HOUR RATED WALL ASSEMBLY AS NOTED. REFER TO RATED WALL ASSEMBLY DETAIL 12 ON SHEET A501
- OVERHANG ABOVE OF FLOOR/ROOF
- ALL WEATHER LANDING SURFACE EQUAL IN WIDTH TO THE DOOR SERVED AND MIN. 36 DEEP IN DIRECTION OF TRAVEL AT ALL EXTERIOR DOORS PER IRC R311.3
- ROOF SCUPPER**
- TANKLESS WATER HEATER AND SOFT WATER LOOP. TANKLESS WATER HEATER MINIMUM CLEARANCE 6 FT ABOVE FINISH FLOOR
- 36" MIN. HEIGHT GUARDRAIL W/ 4 MAX VERTICAL SPACING OF HORIZONTAL RINGS. GUARDRAIL TO SUPPORT 200# CONCENTRATED LOAD / 50# UNIFORM LOAD
- OPEN RISERS CANNOT PERMIT THE PASSAGE OF A 4" SPHERE BETWEEN TREADS.
- PROFILE OF TREAD: RADIUS OF LEADING EDGE OF TREAD SHALL BE NO GREATER THAN 9/16". A NOSING NOT LESS THAN 3/4" BUT NOT MORE THAN 1 1/4" SHALL BE PROVIDED ON STAIRWAYS WITH SOLID RISERS.
- HEAT PUMP - SEE MECH.
- GAS METER. SEE PLUMBING
- ELECTRICAL PANEL. SEE ELEC.
- AIR HANDLER. SEE MECH.
- AV. BACK 20"x20"
- GAS FIREPLACE (REFER TO SHEET A503). INSTALL PER IRC R1004.1. COMBUSTION AIR PROVIDED PER IRC R1006.1.1.
- GAS FIREPLACE FLUE



**CASA AZUL LOT 2**

6337 N 10th Drive Phoenix, AZ 85013

REVISION	DATE	REASON FOR ISSUE
1	01/05/22	Pre-Log Review



**FLOOR PLANS + SCHEDULES**

**PERMIT SET**

DATE	REVISION
2022-01-05	1

PROJECT NUMBER	SHEET NUMBER
000000	A103

SCALE: As indicated