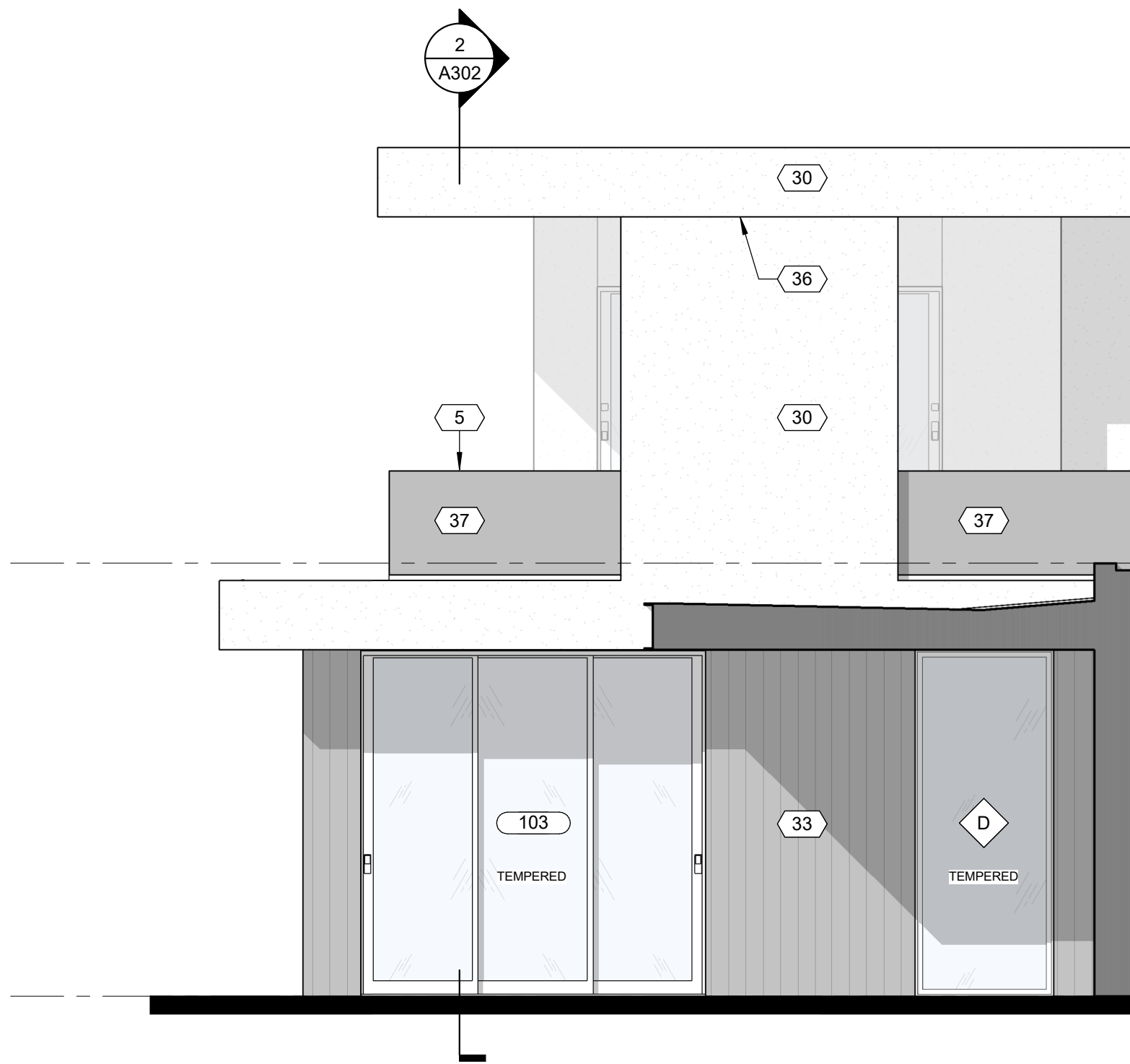
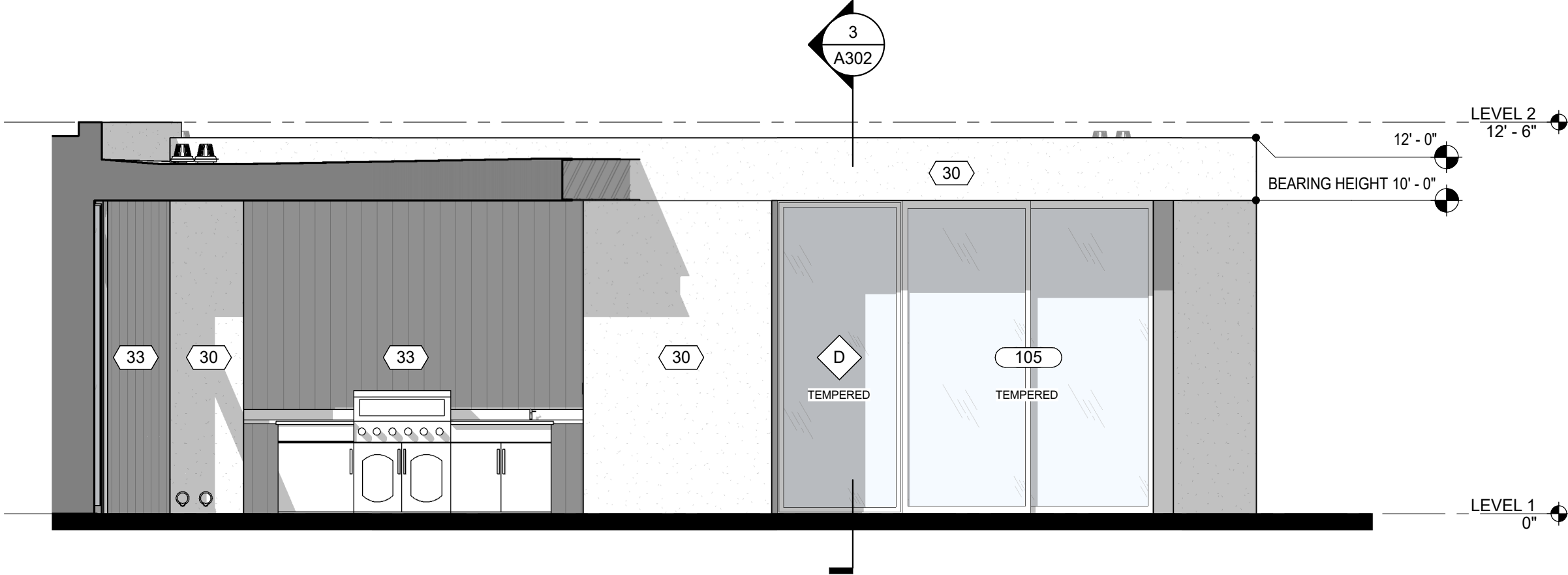
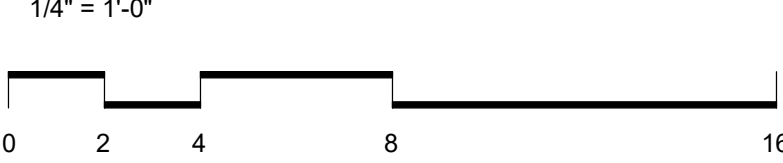


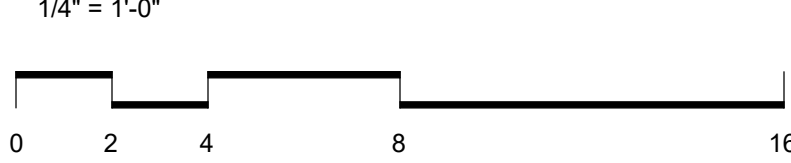
C:\Users\Fran.Thomson\OneDrive - DesignTANK\Documents - DesignTANK\Documents - Tyler Kuenz's files\00 Active Projects\Palmaire - Lot 5\Palmaire-Lot-5-Permit-Set.dwg 9/28/2022 3:21:40 PM



4 ELEVATION - EAST (REAR PATIO)



3 ELEVATION - WEST (REAR PATIO)



ELEVATION KEYNOTES

- 36" MIN. HEIGHT GUARDRAIL W/ 4" MAX VERTICAL SPACING OF HORIZONTAL RUNGS. GUARDRAIL TO SUPPORT 200# CONCENTRATED LOAD / 50# UNIFORM LOAD PER IRC 2018 R312.1.
- 4"X6" MIN. THRU-WALL SCUPPER.
- EXTERIOR STUCCO SYSTEM (TYP) PER ICC-ES REPORT ESR-1471 OVER 1" INSULATION BOARD AND WEATHER BARRIER (DUPONT TYVEK STUCCO WRAP PER ICC-ESR 2375).
- MASONRY VENEER PER ICC-ES REPORT ESR-4330.
- EXTERIOR WOOD OR FIBER CEMENT RAINSCREEN WALL SYSTEM (TYP) PER ICC-ES REPORT ESR-3910.
- VELUX CURB MOUNTED SKYLIGHT PER UNIFORM ICC-ES REPORT ER-0199 TYP.
- CONTROL JOINT TYP.
- METAL PANEL SIDING.
- PAINTED STEEL COLUMN PER STRUCTURAL.
- EXTERIOR CMU WALL PER STRUCTURAL.
- DECORATIVE 2"X6", OR SIMILAR, HEMLOCK SHADE FIN. SPACED 6" O.C.
- METAL PANEL SCREEN ON STEEL FRAME.
- ASPHALT SHINGLES PER ICC-ES REPORT ESR-1475. MANUFACTURE. GRAF.
- VEGETATED METAL SCREEN WALL.

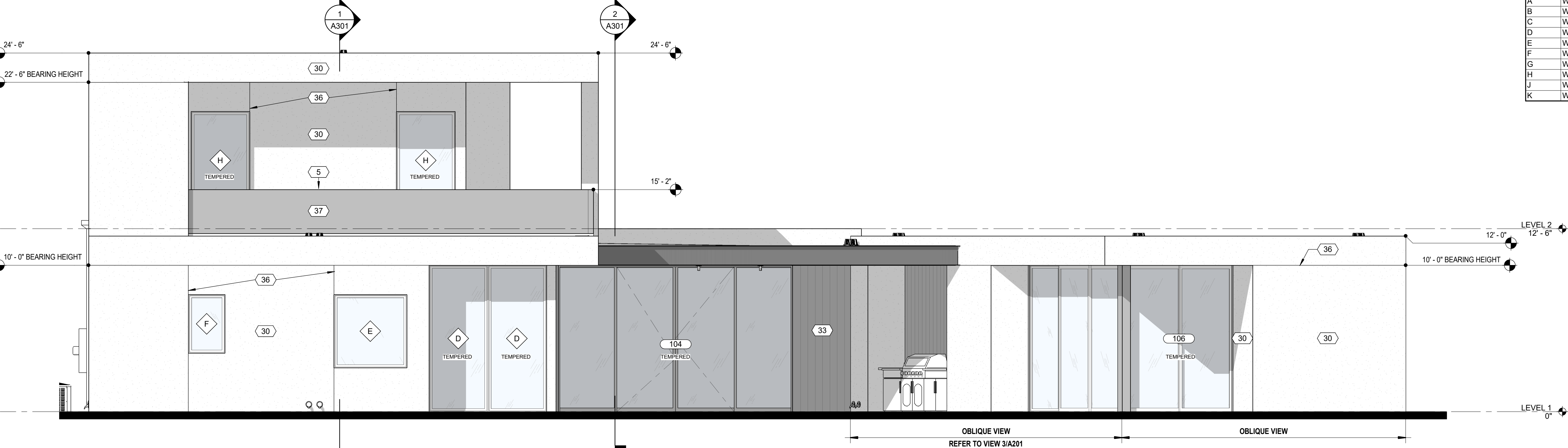
*NOTE:
BUILDING ADDRESS SHALL BE PERMANENT, VISIBLE FROM STREET, AND A MINIMUM 4 INCH HIGH WITH A STROKE WIDTH OF A HALF INCH.

WINDOW SCHEDULE							
MARK	FAMILY	COUNT	WIDTH	HEIGHT	HEAD HEIGHT	SILL HEIGHT	COMMENTS
A	WD - Fixed	2	3'-0"	6'-0"	8'-0"	2'-0"	
B	WD - Casement-Single-Left	1	3'-0"	6'-0"	8'-0"	2'-0"	
C	WD - Fixed	1	3'-0"	10'-0"	10'-0"	0"	
D	WD - Fixed	4	4'-0"	10'-0"	10'-0"	0"	TEMPERED
E	WD - Fixed	1	5'-0"	8'-0"	8'-0"	3'-0"	
F	WD - Fixed	2	2'-6"	4'-0"	8'-0"	4'-0"	
G	WD - Fixed	4	2'-0"	2'-0"	8'-0"	6'-0"	
H	WD - Fixed	2	4'-0"	8'-0"	8'-0"	0"	TEMPERED
J	WD - Casement-Single-Right	1	3'-0"	6'-0"	8'-0"	2'-0"	
K	WD - Fixed	2	2'-6"	5'-0"	8'-0"	3'-0"	

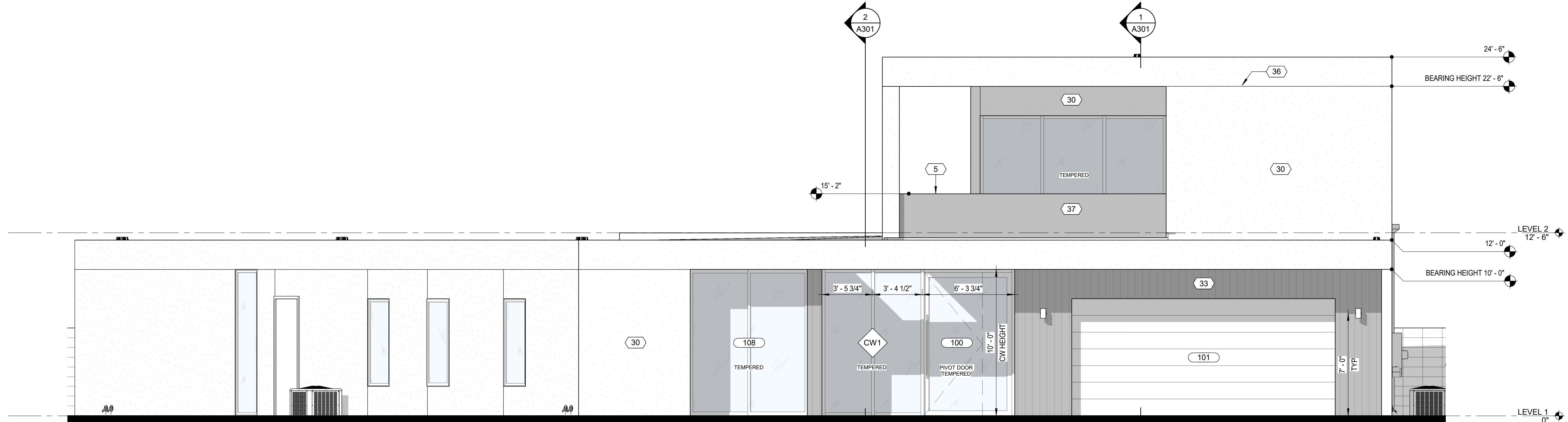
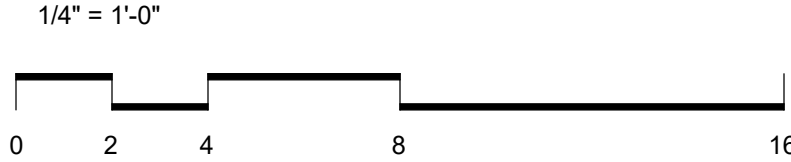
DOOR SCHEDULE					
MARK	COUNT	DOOR SIZE		COMMENTS	
		WIDTH	HEIGHT		
100	1	6'-0"	9'-9 1/2"	FRONT PIVOT DOOR - TEMPERED	
101	1	18'-0"	8'-0"	OVERHEAD GARAGE DOOR	
102	1	3'-0"	8'-0"	EXTERIOR GARAGE DOOR	
103	1	10'-0"	10'-0"	MULTI-SLIDE GLASS DOOR - TEMPERED	
104	1	16'-0"	10'-0"	MULTI-SLIDE GLASS DOOR - TEMPERED	
105	1	8'-0"	10'-0"	GLASS SLIDER - TEMPERED	
106	1	8'-0"	10'-0"	GLASS SLIDER - TEMPERED	
107	1	3'-0"	8'-0"	EXTERIOR DOOR	
108	1	8'-0"	10'-0"	GLASS SLIDER - TEMPERED	
109	1	3'-0"	8'-0"	INTERIOR DOOR	
110	1	6'-0"	8'-0"	SLIDING CLOSET DOOR	
111	1	2'-6"	8'-0"	INTERIOR POCKET DOOR	
112	1	2'-6"	8'-0"	INTERIOR DOOR	
113	1	2'-6"	8'-0"	INTERIOR POCKET DOOR	
114	1	6'-0"	8'-0"	SLIDING CLOSET DOOR	
115	1	3'-0"	8'-0"	INTERIOR DOOR	
116	1	2'-8"	8'-0"	INTERIOR DOOR	
117	1	3'-0"	8'-0"	INTERIOR DOOR	
118	1	3'-0"	8'-0"	INTERIOR POCKET DOOR	
119	1	3'-0"	8'-0"	INTERIOR OPENING	
120	1	2'-6"	8'-0"	INTERIOR DOOR	
121	1	3'-0"	8'-0"	INTERIOR POCKET DOOR	
122	1	2'-6"	8'-0"	INTERIOR GARAGE DOOR - 45 MIN. FIRE-RATED	
123	1	2'-6"	8'-0"	INTERIOR DOOR	
124	1	3'-0"	8'-0"	GARAGE ENTRY DOOR - 45 MIN. RATED W/ POSITIVE LATCHING & GASKET	
125	1	3'-0"	8'-0"	INTERIOR POCKET DOOR	
126	1	3'-0"	8'-0"	INTERIOR POCKET DOOR	
127	1	2'-6"	8'-0"	INTERIOR DOOR	
128	1	3'-0"	8'-0"	INTERIOR POCKET DOOR	
129	1	3'-0"	8'-0"	INTERIOR POCKET DOOR	
200	1	10'-0"	8'-0"	MULTI-SLIDE GLASS DOOR - TEMPERED	
201	1	7'-0"	8'-0"	GLASS SLIDER - TEMPERED	
202	1	3'-0"	8'-0"	INTERIOR DOOR	
203	1	2'-6"	8'-0"	INTERIOR DOOR	
204	1	2'-6"	8'-0"	INTERIOR POCKET DOOR	
205	1	2'-6"	8'-0"	INTERIOR DOOR	
206	1	2'-8"	8'-0"	INTERIOR DOOR	
207	1	2'-6"	8'-0"	INTERIOR DOOR	

CURTAIN WALL SCHEDULE				
MARK	LENGTH	OVERALL HEIGHT	AREA	COMMENTS
CW1	13'-2"	10'-0"	131.7 SF	FRONT ENTRY
CW2	12'-8 1/2"	8'-0"	101.6 SF	LEVEL 2 - STAIR
CW3	4'-6 1/4"	10'-6"	44.1 SF	PRIMARY SHOWER
CW4	4'-4"	10'-6"	43.4 SF	PRIMARY SHOWER

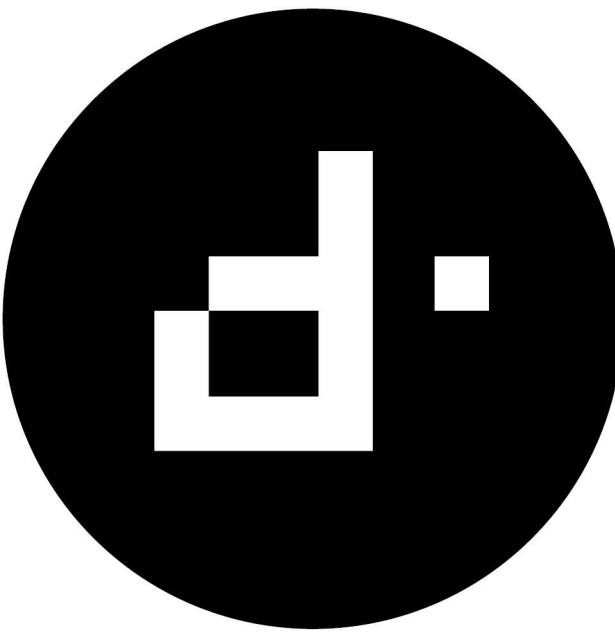
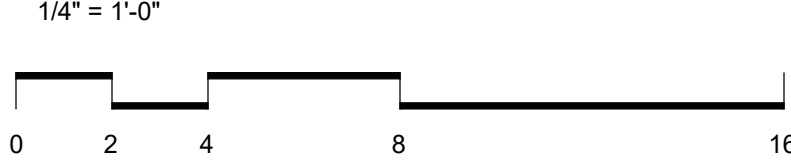
SELF-CERTIFIED BY: KENT A. BARBER, P.E., S.E., 11/16/2022
• I, THE UNDERSIGNED, AM A LICENSED PROFESSIONAL ENGINEER IN THE STATE OF ARIZONA.
• MY EXPIRATION DATE IS 11/16/2025.
• THESE PLANS ARE COMPLETE.
• THESE PLANS ARE, AS OF THE DATE OF SUBMISSION, IN COMPLIANCE WITH ALL CITY, COUNTY, STATE AND FEDERAL BUILDING, PLUMBING, MECHANICAL, ELECTRICAL, AND ALL OTHER APPLICABLE LAWS, ORDINANCES, AND ALL OTHER APPLICABLE LAWS.



2 ELEVATION - SOUTH (REAR)



1 ELEVATION - NORTH (FRONT)



DESIGNTANK ©
1640 E BETHANY HOME ROAD
PHOENIX, AZ 85016
503.580.5626

CONSULTANT:

PERMIT SET

PALMAIRE - LOT 5

1827 E PALMAIRE AVE, PHOENIX, AZ 85020

REVISION	DATE	REASON FOR ISSUE

ARCHITECTS STAMP:



BUILDING ELEVATIONS

CITY OF PHOENIX
PLANNING & DEVELOPMENT DEPARTMENT
SELF-CERTIFIED PLANS
OFFICIAL CONSTRUCTION SET
11/29/2022

This set of plans shall be kept at the construction site. Acceptance of these plans shall not prevent the Building Official from requiring correction of errors in the plans where such errors are subsequently found to be in violation of any law or ordinance.

DATE
2022-0928

SCALE
1/4" = 1'-0"

SHEET SIZE
30" X 42"

REVISION

SHEET NUMBER

A201

ELEVATION KEYNOTES

5. 36" MIN. HEIGHT GUARDRAIL W/ 4" MAX VERTICAL SPACING OF HORIZONTAL RUNGS. GUARDRAIL TO SUPPORT 200# CONCENTRATED LOAD / 50# UNIFORM LOAD PER IRC 2018 R312.1.
- 12a. METAL ROOF SCUPPER W/ DOWNSPOUT.
- 12b. 4"x6" MIN. THRU-WALL SCUPPER.
30. EXTERIOR STUCCO SYSTEM (TYP) PER ICC-ES REPORT ESR-1471 OVER 1" INSULATION BOARD AND WEATHER BARRIER (DUPONT TYVEK STUCCO WRAP PER ICC-ESR 2375).
32. MASONRY VENEER PER ICC-ES REPORT ESR-4330.
33. EXTERIOR WOOD OR FIBER CEMENT RAINSCREEN WALL SYSTEM (TYP) PER ICC-ES REPORT ESR-3910.
34. VELUX CURB MOUNTED SKYLIGHT PER UNIFORM ICC-ES REPORT ER-0199 TYP.
36. CONTROL JOINT TYP.
37. METAL PANEL SIDING.
39. PAINTED STEEL COLUMN PER STRUCTURAL.
43. EXTERIOR CMU WALL PER STRUCTURAL.
44. DECORATIVE 2"x6", OR SIMILAR, HEMLOCK SHADE FIN. SPACED 6" O.C.
53. METAL PANEL SCREEN ON STEEL FRAME.
56. ASPHALT SHINGLES PER ICC-ES REPORT ESR-1475. MANUFACTURE: GRAF.
60. VEGETATED METAL SCREEN WALL.

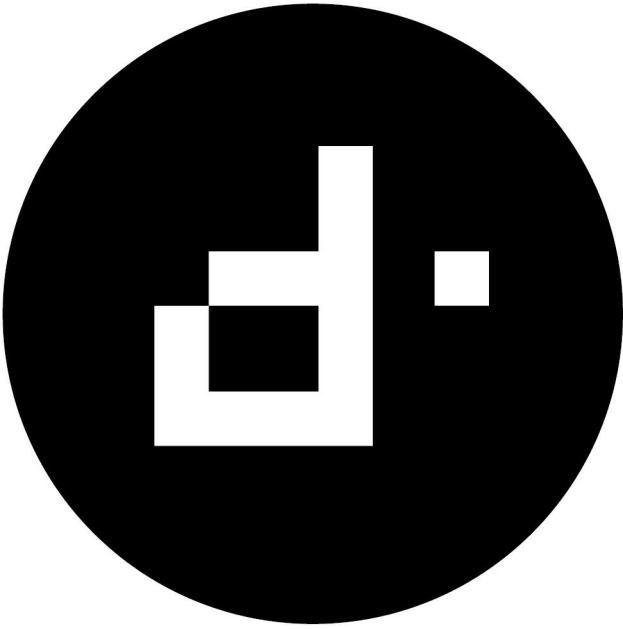
*NOTE:
BUILDING ADDRESS SHALL BE PERMANENT, VISIBLE FROM STREET, AND A MINIMUM 4 INCH HIGH WITH A STROKE WIDTH OF A HALF INCH.

WINDOW SCHEDULE							
MARK	FAMILY	COUNT	WIDTH	HEIGHT	HEAD HEIGHT	SILL HEIGHT	COMMENTS
A	WD - Fixed	2	3'-0"	6'-0"	8'-0"	2'-0"	
B	WD - Casement-Single-Left	1	3'-0"	6'-0"	8'-0"	2'-0"	
C	WD - Fixed	1	3'-0"	10'-0"	10'-0"	0"	
D	WD - Fixed	4	4'-0"	10'-0"	10'-0"	0"	TEMPERED
E	WD - Fixed	1	5'-0"	15'-0"	8'-0"	3'-0"	
F	WD - Fixed	2	2'-6"	4'-0"	8'-0"	4'-0"	
G	WD - Fixed	4	2'-0"	2'-0"	8'-0"	6'-0"	
H	WD - Fixed	2	4'-0"	8'-0"	8'-0"	0"	TEMPERED
J	WD - Casement-Single-Right	1	3'-0"	6'-0"	8'-0"	2'-0"	
K	WD - Fixed	2	2'-6"	5'-0"	8'-0"	3'-0"	

DOOR SCHEDULE				
MARK	COUNT	DOOR SIZE		COMMENTS
		WIDTH	HEIGHT	
100	1	6'-0"	9'-9 1/2"	FRONT PIVOT DOOR - TEMPERED
101	1	18'-0"	8'-0"	OVERHEAD GARAGE DOOR
102	1	3'-0"	8'-0"	EXTERIOR GARAGE DOOR
103	1	10'-0"	10'-0"	MULTI-SLIDE GLASS DOOR - TEMPERED
104	1	16'-0"	10'-0"	MULTI-SLIDE GLASS DOOR - TEMPERED
105	1	8'-0"	10'-0"	GLASS SLIDER - TEMPERED
106	1	8'-0"	10'-0"	GLASS SLIDER - TEMPERED
107	1	3'-0"	8'-0"	EXTERIOR DOOR
108	1	8'-0"	10'-0"	GLASS SLIDER - TEMPERED
109	1	3'-0"	8'-0"	INTERIOR DOOR
110	1	6'-0"	8'-0"	SLIDING CLOSET DOOR
111	1	2'-6"	8'-0"	INTERIOR POCKET DOOR
112	1	2'-6"	8'-0"	INTERIOR DOOR
113	1	2'-6"	8'-0"	INTERIOR POCKET DOOR
114	1	6'-0"	8'-0"	SLIDING CLOSET DOOR
115	1	3'-0"	8'-0"	INTERIOR DOOR
116	1	2'-6"	8'-0"	INTERIOR DOOR
117	1	3'-0"	8'-0"	INTERIOR DOOR
118	1	3'-0"	8'-0"	INTERIOR POCKET DOOR
119	1	3'-0"	8'-0"	INTERIOR OPENING
120	1	2'-6"	8'-0"	INTERIOR DOOR
121	1	3'-0"	8'-0"	INTERIOR POCKET DOOR
122	1	2'-6"	8'-0"	INTERIOR GARAGE DOOR - 45 MIN. FIRE-RATED
123	1	2'-6"	8'-0"	INTERIOR DOOR
124	1	3'-0"	8'-0"	GARAGE ENTRY DOOR - 45 MIN. RATED W/ POSITIVE LATCHING & GASKET
125	1	3'-0"	8'-0"	INTERIOR POCKET DOOR
126	1	3'-0"	8'-0"	INTERIOR POCKET DOOR
127	1	2'-6"	8'-0"	INTERIOR DOOR
128	1	3'-0"	8'-0"	INTERIOR POCKET DOOR
129	1	3'-0"	8'-0"	INTERIOR POCKET DOOR
200	1	10'-0"	8'-0"	MULTI-SLIDE GLASS DOOR - TEMPERED
201	1	7'-0"	8'-0"	GLASS SLIDER - TEMPERED
202	1	3'-0"	8'-0"	INTERIOR DOOR
203	1	2'-6"	8'-0"	INTERIOR DOOR
204	1	2'-6"	8'-0"	INTERIOR POCKET DOOR
205	1	2'-6"	8'-0"	INTERIOR DOOR
206	1	2'-8"	8'-0"	INTERIOR DOOR
207	1	2'-6"	8'-0"	INTERIOR DOOR

CURTAIN WALL SCHEDULE				
MARK	LENGTH	OVERALL HEIGHT	AREA	COMMENTS
CW1	13'-2"	10'-0"	131.7 SF	FRONT ENTRY
CW2	12'-8 1/2"	8'-0"	101.6 SF	LEVEL 2 - STAIR
CW3	4'-6 1/4"	10'-6"	44.1 SF	PRIMARY SHOWER
CW4	4'-4"	10'-6"	43.4 SF	PRIMARY SHOWER

SELF-CERTIFIED BY: KEVIN A. BARBER, P.E. 11/16/2022
PLANS WERE PREPARED BY OR UNDER THE DIRECT SUPERVISION OF, OR REVIEWED BY THE SELF-CERTIFIED PROFESSIONAL, AND THE DATE OF SUBMISSION, IN COMPLIANCE WITH CITY OF PHOENIX BUILDING, CIVIL, SITE AND ZONING CODES, ORDINANCES, AND ALL OTHER APPLICABLE LAWS.



DESIGNTANK ©
1640 E BETHANY HOME ROAD
PHOENIX, AZ 85016
503.580.5626

CONSULTANT:

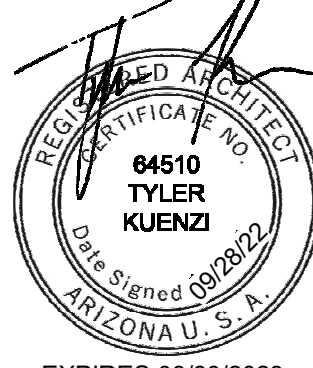
PERMIT SET

PALMAIRE - LOT 5

1827 E PALMAIRE AVE, PHOENIX, AZ 85020

REVISION	DATE	REASON FOR ISSUE

ARCHITECTS STAMP:



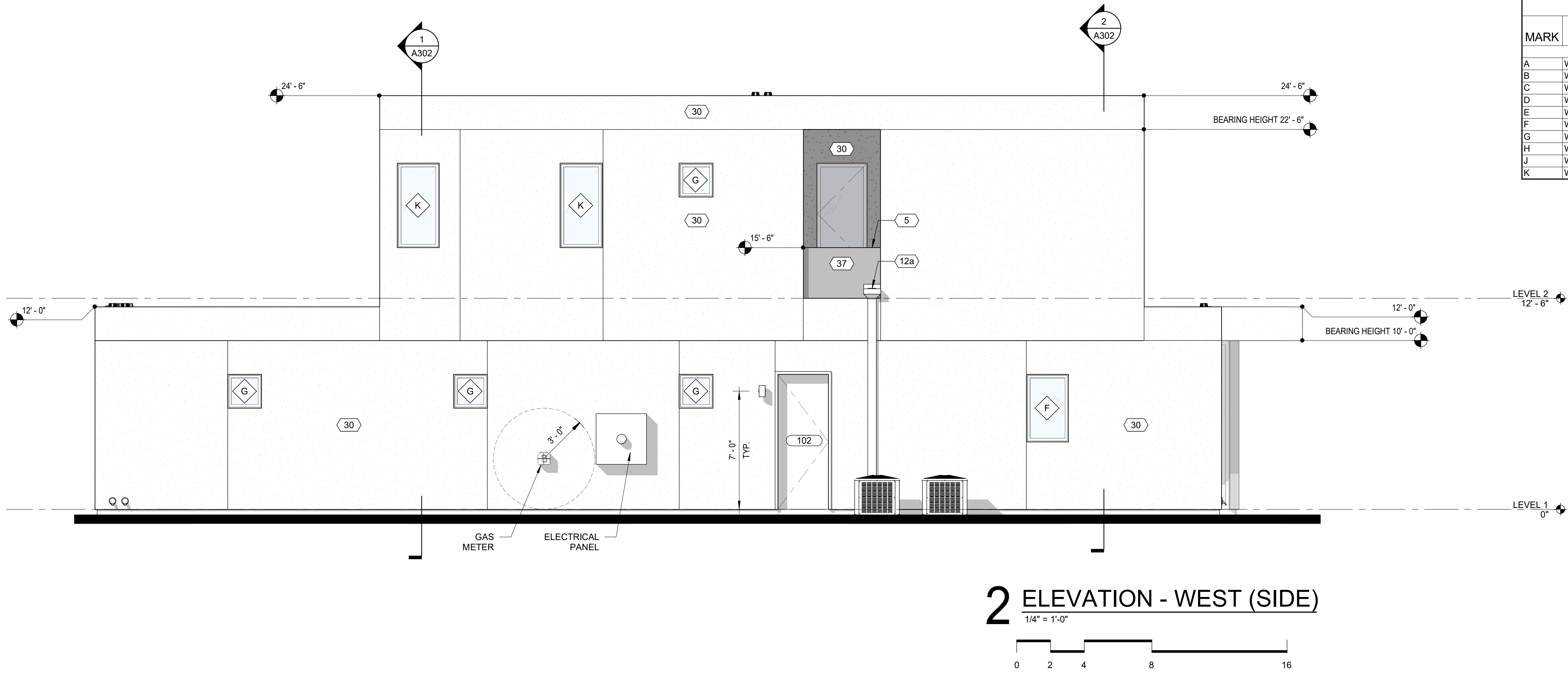
EXPIRES 09/30/2023

BUILDING ELEVATIONS

CITY OF PHOENIX
PLANNING & DEVELOPMENT DEPARTMENT
SELF-CERTIFIED PLANS
OFFICIAL CONSTRUCTION SET
11/29/2022

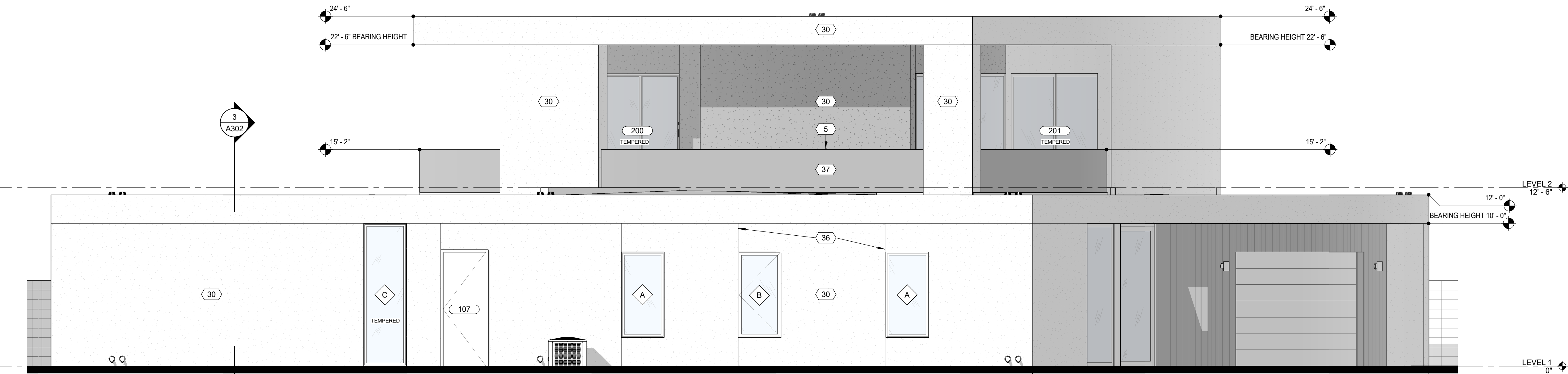
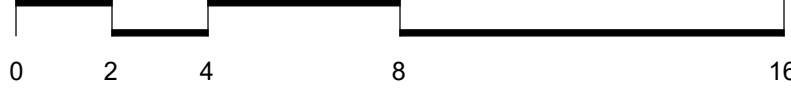
This set of plans shall be kept at the construction site. Acceptance of these plans shall not prevent the Building Official from requiring correction of errors in the plans where such errors are subsequently found to be in violation of any law or ordinance.

DATE 2022-0928	REVISION
SCALE 1/4" = 1'-0"	SHEET NUMBER A202
SHEET SIZE 30" X 42"	



2 ELEVATION - WEST (SIDE)

1/4" = 1'-0"



1 ELEVATION - EAST (SIDE)

1/4" = 1'-0"

