

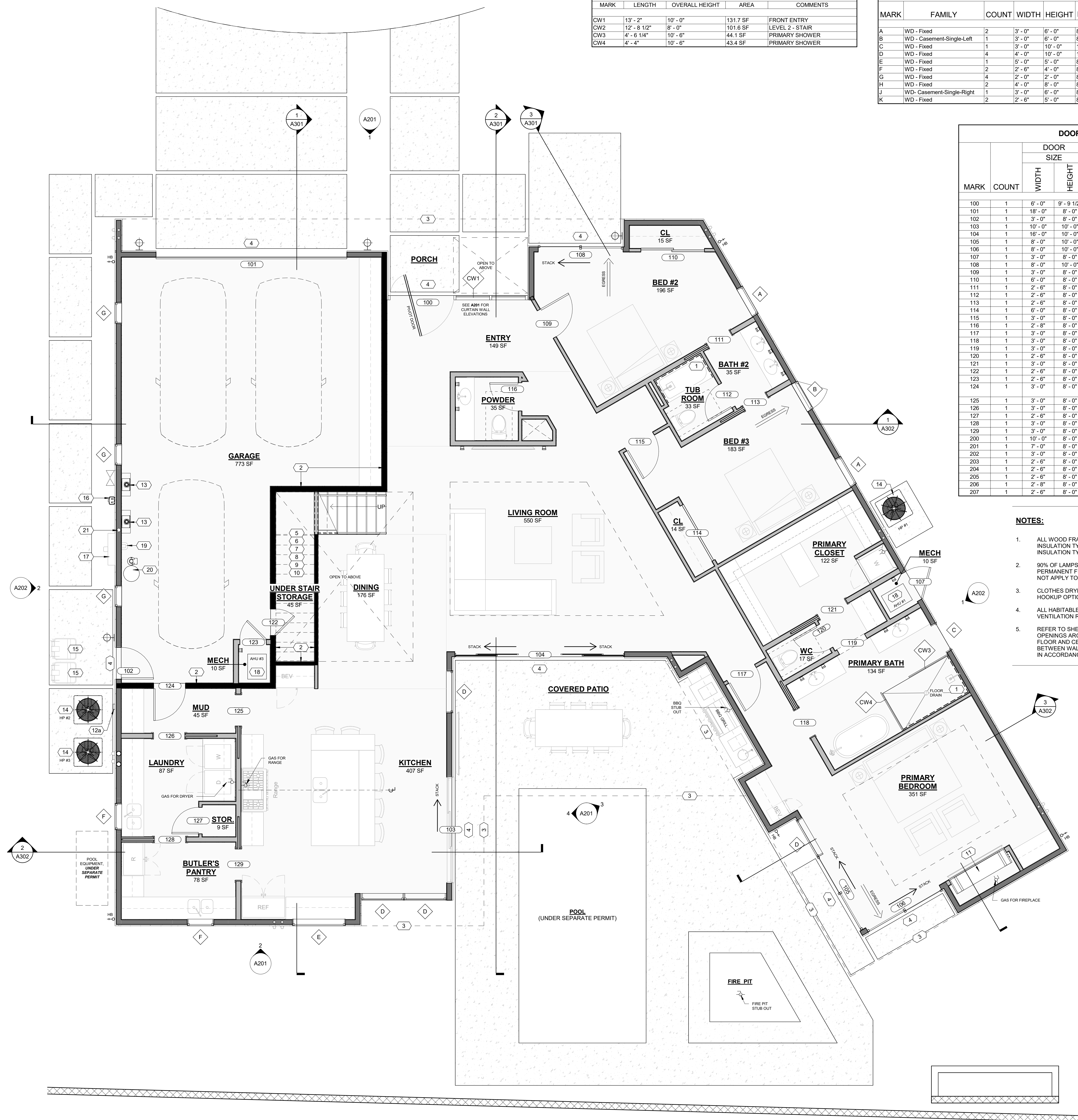
09/20/2022 3:21:22 PM
 C:\Users\Fran.Thomson\OneDrive - DesignTANK\Documents - DesignTANK\Documents - Tyler_Kuenz\Active Projects\Palmaire - Lot 07\BIM\LOT_02\2022-2600_Palmaire-Lot-5_PERMIT_SET.rvt

CURTAIN WALL SCHEDULE				
MARK	LENGTH	OVERALL HEIGHT	AREA	COMMENTS
CW1	13'-2"	10'-0"	131.7 SF	FRONT ENTRY
CW2	12'-8 1/2"	8'-0"	101.6 SF	LEVEL 2 - STAIR
CW3	4'-6 1/4"	10'-6"	44.1 SF	PRIMARY SHOWER
CW4	4'-4"	10'-6"	43.4 SF	PRIMARY SHOWER

WINDOW SCHEDULE							
MARK	FAMILY	COUNT	WIDTH	HEIGHT	HEAD HEIGHT	SILL HEIGHT	COMMENTS
A	WD - Fixed	2	3'-0"	6'-0"	8'-0"	2'-0"	
B	WD - Casement-Single-Left	1	3'-0"	6'-0"	8'-0"	2'-0"	
C	WD - Fixed	1	3'-0"	10'-0"	10'-0"	0"	
D	WD - Fixed	4	4'-0"	10'-0"	10'-0"	0"	TEMPERED
E	WD - Fixed	1	5'-0"	5'-0"	8'-0"	3'-0"	
F	WD - Fixed	2	2'-6"	4'-0"	8'-0"	4'-0"	
G	WD - Fixed	4	2'-0"	2'-0"	8'-0"	6'-0"	
H	WD - Fixed	2	4'-0"	8'-0"	8'-0"	0"	TEMPERED
J	WD - Casement-Single-Right	1	3'-0"	6'-0"	8'-0"	2'-0"	
K	WD - Fixed	2	2'-6"	5'-0"	8'-0"	3'-0"	

DOOR SCHEDULE					
MARK	COUNT	DOOR SIZE		COMMENTS	
		WIDTH	HEIGHT		
100	1	8'-0"	9'-9 1/2"	FRONT PIVOT DOOR - TEMPERED	
101	1	18'-0"	8'-0"	OVERHEAD GARAGE DOOR	
102	1	3'-0"	8'-0"	EXTERIOR GARAGE DOOR	
103	1	10'-0"	10'-0"	MULTI-SLIDE GLASS DOOR - TEMPERED	
104	1	16'-0"	10'-0"	MULTI-SLIDE GLASS DOOR - TEMPERED	
105	1	8'-0"	10'-0"	GLASS SLIDER - TEMPERED	
106	1	8'-0"	10'-0"	GLASS SLIDER - TEMPERED	
107	1	3'-0"	8'-0"	EXTERIOR DOOR	
108	1	8'-0"	10'-0"	GLASS SLIDER - TEMPERED	
109	1	3'-0"	8'-0"	INTERIOR DOOR	
110	1	6'-0"	8'-0"	SLIDING CLOSET DOOR	
111	1	2'-6"	8'-0"	INTERIOR POCKET DOOR	
112	1	2'-6"	8'-0"	INTERIOR DOOR	
113	1	2'-6"	8'-0"	INTERIOR POCKET DOOR	
114	1	6'-0"	8'-0"	SLIDING CLOSET DOOR	
115	1	3'-0"	8'-0"	INTERIOR DOOR	
116	1	2'-8"	8'-0"	INTERIOR DOOR	
117	1	3'-0"	8'-0"	INTERIOR DOOR	
118	1	3'-0"	8'-0"	INTERIOR POCKET DOOR	
119	1	3'-0"	8'-0"	INTERIOR OPENING	
120	1	2'-6"	8'-0"	INTERIOR DOOR	
121	1	3'-0"	8'-0"	INTERIOR POCKET DOOR	
122	1	2'-6"	8'-0"	INTERIOR GARAGE DOOR - 45 MIN. FIRE-RATED	
123	1	2'-6"	8'-0"	INTERIOR DOOR	
124	1	3'-0"	8'-0"	GARAGE ENTRY DOOR - 45 MIN. RATED W/ POSITIVE LATCHING & GASKET	
125	1	3'-0"	8'-0"	INTERIOR POCKET DOOR	
126	1	3'-0"	8'-0"	INTERIOR POCKET DOOR	
127	1	2'-6"	8'-0"	INTERIOR DOOR	
128	1	3'-0"	8'-0"	INTERIOR POCKET DOOR	
129	1	3'-0"	8'-0"	INTERIOR POCKET DOOR	
200	1	10'-0"	8'-0"	MULTI-SLIDE GLASS DOOR - TEMPERED	
201	1	7'-0"	8'-0"	GLASS SLIDER - TEMPERED	
202	1	3'-0"	8'-0"	INTERIOR DOOR	
203	1	2'-6"	8'-0"	INTERIOR DOOR	
204	1	2'-6"	8'-0"	INTERIOR POCKET DOOR	
205	1	2'-6"	8'-0"	INTERIOR DOOR	
206	1	2'-8"	8'-0"	INTERIOR DOOR	
207	1	2'-6"	8'-0"	INTERIOR DOOR	

- NOTES:**
- ALL WOOD FRAMED EXTERIOR WALLS TO HAVE MIN. R-21 INSULATION TYP. ALL CEILINGS TO HAVE MIN. R-38 INSULATION TYP.
 - 90% OF LAMPS IN PERMANENT FIXTURES OR 90% OF PERMANENT FIXTURES HAVE HIGH EFFICACY LAMPS. DOES NOT APPLY TO LOW VOLTAGE LIGHTING
 - CLOTHES DRYERS TO HAVE BOTH GAS AND ELECTRIC HOOKUP OPTIONS. REFERENCE SHEET P103 AND E104
 - ALL HABITABLE SPACE ROOMS COMPLY WITH LIGHT AND VENTILATION REQUIREMENTS PER IRC R303
 - REFER TO SHEET A504 FOR FIREBLOCKING DETAILS IN OPENINGS AROUND VENTS, CHIMNEYS, AND FIREPLACES AT FLOOR AND CEILING LEVELS AND IN CONCEALED SPACES BETWEEN WALL STUDS AT STAIRS IN LINE WITH STRINGERS. IN ACCORDANCE WITH IRC SECTIONS R302.11 AND R302.12.



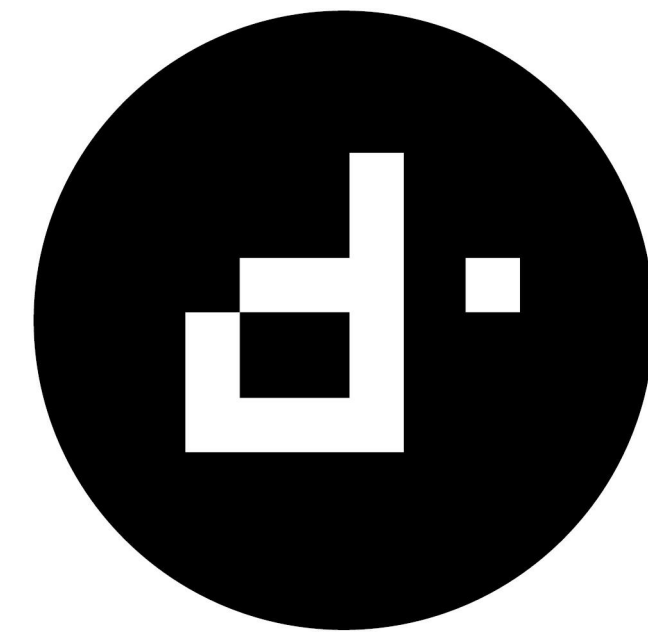
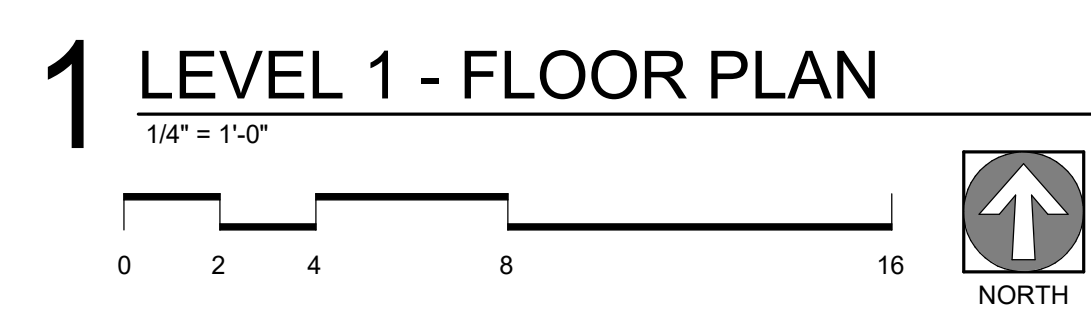
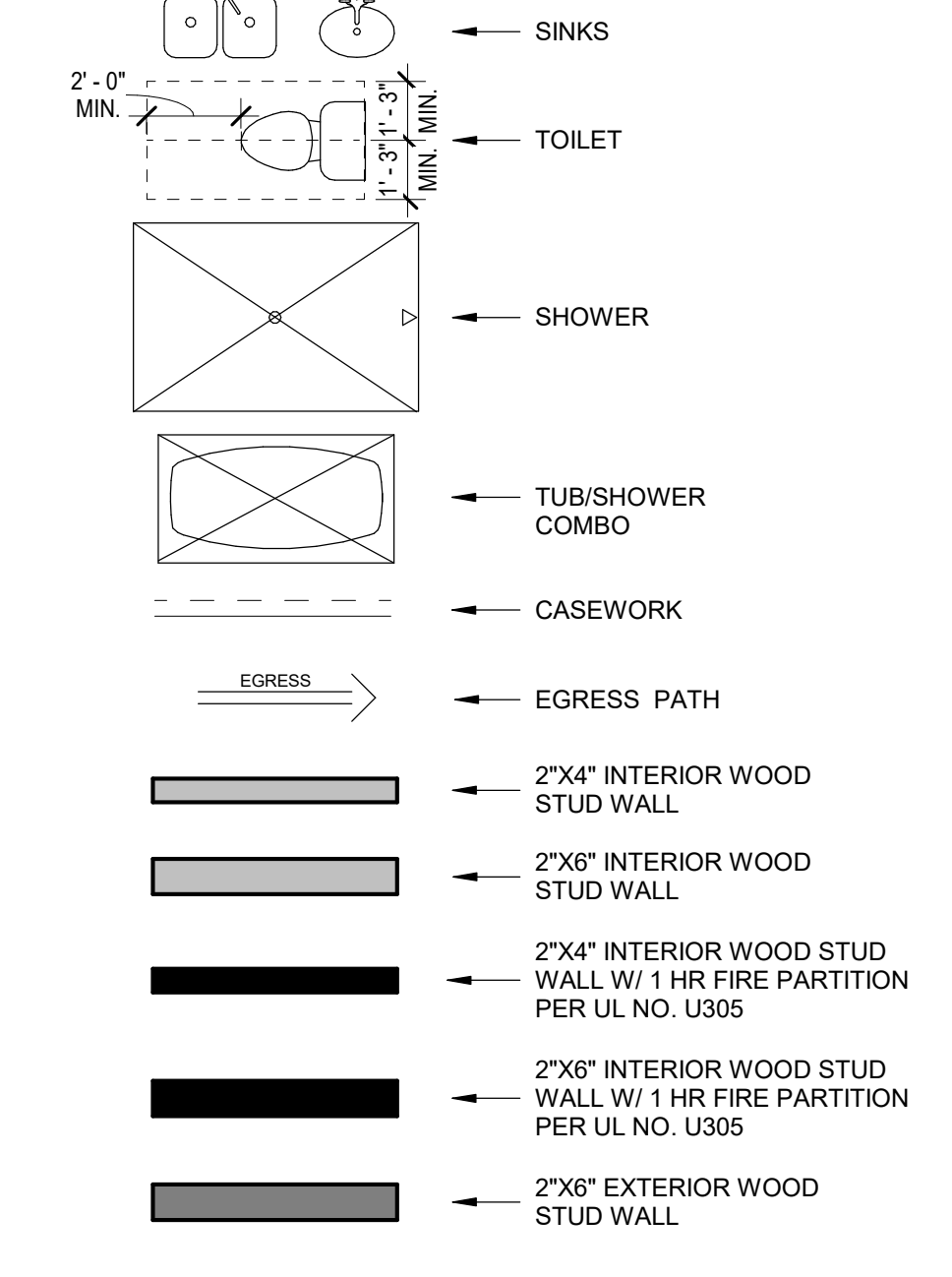
FLOOR PLAN GENERAL NOTES

- GAS LINES: GAS PIPING PLACED UNDER ANY CONCRETE SLAB SHALL COMPLY PER IFGC 404.14 REQUIREMENTS. SHALL CONFORM TO IFGC SECTION 403 FOR MATERIALS, INSTALLATION, AND TESTING.
- VERIFY AND MAINTAIN REQUIRED HORIZONTAL AND VERTICAL CLEARANCES ABOVE THE FINISHED COUNTERTOP SURFACE BEFORE ORDERING OR INSTALLING CABINETS.
- MAXIMUM STUD SPACING IS 16 INCHES ON CENTER UNLESS NOTED OTHERWISE
- REFER TO STRUCTURAL DRAWINGS FOR LOCATIONS AND ADDITIONAL REQUIREMENTS FOR LOAD-BEARING AND SHEAR WALLS
- TYPICAL GYPSUM SHEATHING THICKNESS IS 5/8 INCH UNLESS NOTED OTHERWISE
- PROVIDE A LISTED AND APPROVED RANGE OR COOKTOP UNIT AND INSTALL PER MANUF. REQUIREMENTS. RANGES AND COOKTOPS ARE TO BE MANUFACTURER WOLF OR SIMILAR.

FLOOR PLAN KEYNOTES

- PROVIDE TILE SURFACE AT WALLS SHOWN WITH BOLD DASHED LINE PER IRC R708.2. TILE SURFACE SHALL EXTEND A MINIMUM OF 6 FEET ABOVE FINISHED FLOOR HEIGHT.
- PROVIDE 1-RATED WALL ASSEMBLY AS NOTED. REFER TO RATED WALL ASSEMBLY DETAIL 12 ON SHEET A502.
- OVERHANG OF ROOF FROM LEVEL ABOVE.
- ALL WEATHER LANDING SURFACE EQUAL IN WIDTH TO THE DOOR SERVED AND MIN. 36" DEEP IN DIRECTION OF TRAVEL AT ALL EXTERIOR DOORS PER IRC R311.3
- 36" MIN. HEIGHT GUARDRAIL W/ 4" MAX VERTICAL SPACING OF HORIZONTAL RUNGS. GUARDRAIL TO SUPPORT 200# CONCENTRATED LOAD / 50# UNIFORM LOAD PER 2018 IRC R312.1
- PROVIDE CONTINUOUS 1-1/2" DIA. HANDRAIL @ 36" A.F.F. PER IRC R311.7.
- STAIR RISER HEIGHT SHALL BE A MAXIMUM OF 7-3/4" MEASURED VERTICALLY BETWEEN LEADING EDGES OF ADJACENT TREADS PER IRC R311.7.
- OPEN RISERS CANNOT PERMIT THE PASSAGE OF A 4" SPHERE BETWEEN TREADS PER IRC R311.7.
- MIN. STAIR TREAD DEPTH IS 10" MEASURED HORIZONTALLY BETWEEN VERTICAL PLANES OF THE FOREMOST PROJECTION OF ADJACENT TREADS PER IRC R311.7.
- PROFILE OF TREAD, RADIUS OF LEADING EDGE OF TREAD SHALL BE NO GREATER THAN 9/16. A NOSING NOT LESS THAN 3/4 BUT NOT MORE THAN 1 1/4 SHALL BE PROVIDED ON STAIRWAYS WITH SOLID RISERS PER IRC R311.7.
- GAS FIREPLACE INSTALL PER IRC R1004 AND R1005 COMBUSTION AIR PROVIDED PER IRC R1026. REFER TO FIREPLACE SPECS ON SHEET A503.
- METAL ROOF SCUPPER W/ DOWNSPOUT.
- 4"x6" MIN. THRU-WALL SCUPPER.
- TANKLESS GAS WATER HEATER. SEE PLUMBING.
- HEAT PUMP. SEE MECHANICAL.
- TRASH / RECYCLING BINS.
- GAS METER. SEE PLUMBING.
- 400 AMP ELECTRICAL PANEL. SEE ELECTRICAL.
- AIR HANDLER. SEE MECHANICAL.
- SOFT WATER LOOP.
- WATER SOFTENER EQUIPMENT.
- 4" DIAMETER CONDUIT FROM ELECTRICAL PANEL TO ROOF FOR FUTURE SOLAR ARRAY. SEE ELECTRICAL.
- 2" FLOOR DRAIN W/ LEADER DOWN TO LOWER LEVEL. NOT TO BE CONNECTED TO SEWER SYSTEM.
- INTERNAL GUTTER.
- WATERPROOF DECKING SYSTEM ICC-ES REPORT ESR-2151.
- FOAM ROOF PER ICC-ES REPORT ESR-2532 MANUFACTURER: SWD URETHANE
- POLY-DECK 150 PER ICC-ES REPORT ESR-2785 W/ LOW-PROFILE PEDESTAL LEVELING SYSTEM.
- DECORATIVE 2"x6", OR SIMILAR, HEMLOCK SHADE FINS. SPACED 6" O.C.

FLOOR PLAN LEGEND



DESIGNTANK ©
 1640 E BETHANY HOME ROAD
 PHOENIX, AZ 85016
 503.580.5626

CONSULTANT:

PERMIT SET

PALMAIRE - LOT 5
 1827 E PALMAIRE AVE, PHOENIX, AZ 85020

REVISION	DATE	REASON FOR ISSUE

ARCHITECTS STAMP:

 EXPIRES 09/30/2023

FLOOR PLAN - LEVEL 1

CITY OF PHOENIX
 PLANNING & DEVELOPMENT DEPARTMENT
 SELF-CERTIFIED PLANS
 OFFICIAL CONSTRUCTION SET
 11/29/2022
 This set of plans shall be kept at the construction site. Acceptance of these plans shall not prevent the Building Official from requiring correction of errors in the plans where such errors are subsequently found to be in violation of any law or ordinance.

DATE	REVISION
2022-0928	
SCALE	SHEET NUMBER
1/4" = 1'-0"	A103
SHEET SIZE	
30" X 42"	

9/28/2022 3:21:26 PM
 C:\Users\Fran\Documents\Design\TANK\Documents_Tyler_Kuennz\116162022\116162022-2600_Palmaire-Lot-5_PERMIT_SET.rvt

CURTAIN WALL SCHEDULE				
MARK	LENGTH	OVERALL HEIGHT	AREA	COMMENTS
CW1	13'-2"	10'-0"	131.7 SF	FRONT ENTRY
CW2	12'-8 1/2"	8'-0"	101.6 SF	LEVEL 2 - STAIR
CW3	4'-8 1/4"	10'-6"	44.1 SF	PRIMARY SHOWER
CW4	4'-4"	10'-6"	43.4 SF	PRIMARY SHOWER

WINDOW SCHEDULE							
MARK	FAMILY	COUNT	WIDTH	HEIGHT	HEAD HEIGHT	SILL HEIGHT	COMMENTS
A	WD - Fixed	2	3'-0"	6'-0"	8'-0"	2'-0"	
B	WD - Casement-Single-Left	1	3'-0"	6'-0"	8'-0"	2'-0"	
C	WD - Fixed	1	3'-0"	10'-0"	10'-0"	0"	
D	WD - Fixed	4	4'-0"	10'-0"	10'-0"	0"	TEMPERED
E	WD - Fixed	1	5'-0"	5'-0"	8'-0"	3'-0"	
F	WD - Fixed	2	2'-0"	4'-0"	8'-0"	4'-0"	
G	WD - Fixed	4	2'-0"	2'-0"	8'-0"	6'-0"	
H	WD - Fixed	2	4'-0"	8'-0"	8'-0"	0"	TEMPERED
J	WD - Casement-Single-Right	1	3'-0"	6'-0"	8'-0"	2'-0"	
K	WD - Fixed	2	2'-6"	5'-0"	8'-0"	3'-0"	

DOOR SCHEDULE				
MARK	COUNT	DOOR SIZE		COMMENTS
		WIDTH	HEIGHT	
100	1	6'-0"	9'-9 1/2"	FRONT PIVOT DOOR - TEMPERED
101	1	18'-0"	8'-0"	OVERHEAD GARAGE DOOR
102	1	3'-0"	8'-0"	EXTERIOR GARAGE DOOR
103	1	10'-0"	10'-0"	MULTI-SLIDE GLASS DOOR - TEMPERED
104	1	16'-0"	10'-0"	MULTI-SLIDE GLASS DOOR - TEMPERED
105	1	8'-0"	10'-0"	GLASS SLIDER - TEMPERED
106	1	8'-0"	10'-0"	GLASS SLIDER - TEMPERED
107	1	3'-0"	8'-0"	EXTERIOR DOOR
108	1	8'-0"	10'-0"	GLASS SLIDER - TEMPERED
109	1	3'-0"	8'-0"	INTERIOR DOOR
110	1	6'-0"	8'-0"	SLIDING CLOSET DOOR
111	1	2'-6"	8'-0"	INTERIOR POCKET DOOR
112	1	2'-6"	8'-0"	INTERIOR DOOR
113	1	2'-6"	8'-0"	INTERIOR POCKET DOOR
114	1	6'-0"	8'-0"	SLIDING CLOSET DOOR
115	1	3'-0"	8'-0"	INTERIOR DOOR
116	1	2'-8"	8'-0"	INTERIOR DOOR
117	1	3'-0"	8'-0"	INTERIOR DOOR
118	1	3'-0"	8'-0"	INTERIOR POCKET DOOR
119	1	3'-0"	8'-0"	INTERIOR OPENING
120	1	2'-6"	8'-0"	INTERIOR DOOR
121	1	3'-0"	8'-0"	INTERIOR POCKET DOOR
122	1	2'-6"	8'-0"	INTERIOR GARAGE DOOR - 45 MIN. FIRE-RATED
123	1	2'-6"	8'-0"	INTERIOR DOOR
124	1	3'-0"	8'-0"	GARAGE ENTRY DOOR - 45 MIN. RATED W/ POSITIVE LATCHING & GASKET
125	1	3'-0"	8'-0"	INTERIOR POCKET DOOR
126	1	3'-0"	8'-0"	INTERIOR POCKET DOOR
127	1	2'-6"	8'-0"	INTERIOR DOOR
128	1	3'-0"	8'-0"	INTERIOR POCKET DOOR
129	1	3'-0"	8'-0"	INTERIOR POCKET DOOR
200	1	10'-0"	8'-0"	MULTI-SLIDE GLASS DOOR - TEMPERED
201	1	7'-0"	8'-0"	GLASS SLIDER - TEMPERED
202	1	3'-0"	8'-0"	INTERIOR DOOR
203	1	2'-6"	8'-0"	INTERIOR DOOR
204	1	2'-6"	8'-0"	INTERIOR POCKET DOOR
205	1	2'-6"	8'-0"	INTERIOR DOOR
206	1	2'-8"	8'-0"	INTERIOR DOOR
207	1	2'-6"	8'-0"	INTERIOR DOOR

- NOTES:**
- ALL WOOD FRAMED EXTERIOR WALLS TO HAVE MIN. R-21 INSULATION TYP. ALL CEILINGS TO HAVE MIN. R-38 INSULATION TYP.
 - 90% OF LAMPS IN PERMANENT FIXTURES OR 90% OF PERMANENT FIXTURES HAVE HIGH EFFICACY LAMPS. DOES NOT APPLY TO LOW VOLTAGE LIGHTING
 - CLOTHES DRYERS TO HAVE BOTH GAS AND ELECTRIC HOOKUP OPTIONS. REFERENCE SHEET P103 AND E104
 - ALL HABITABLE SPACE ROOMS COMPLY WITH LIGHT AND VENTILATION REQUIREMENTS PER IRC R303.
 - REFER TO SHEET A504 FOR FIREBLOCKING DETAILS IN OPENINGS AROUND VENTS, CHIMNEYS, AND FIREPLACES AT FLOOR AND CEILING LEVELS AND IN CONCEALED SPACES BETWEEN WALL STUDS AT STAIRS IN LINE WITH STRINGERS. IN ACCORDANCE WITH IRC SECTIONS R302.11 AND R302.12.

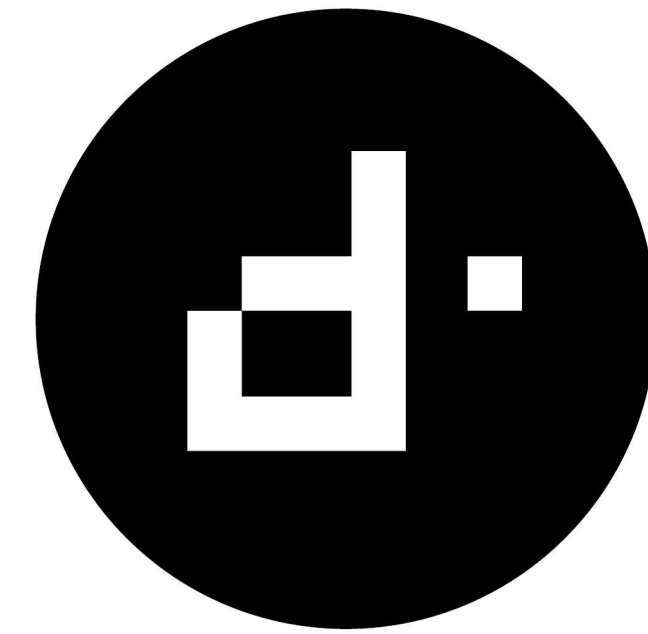
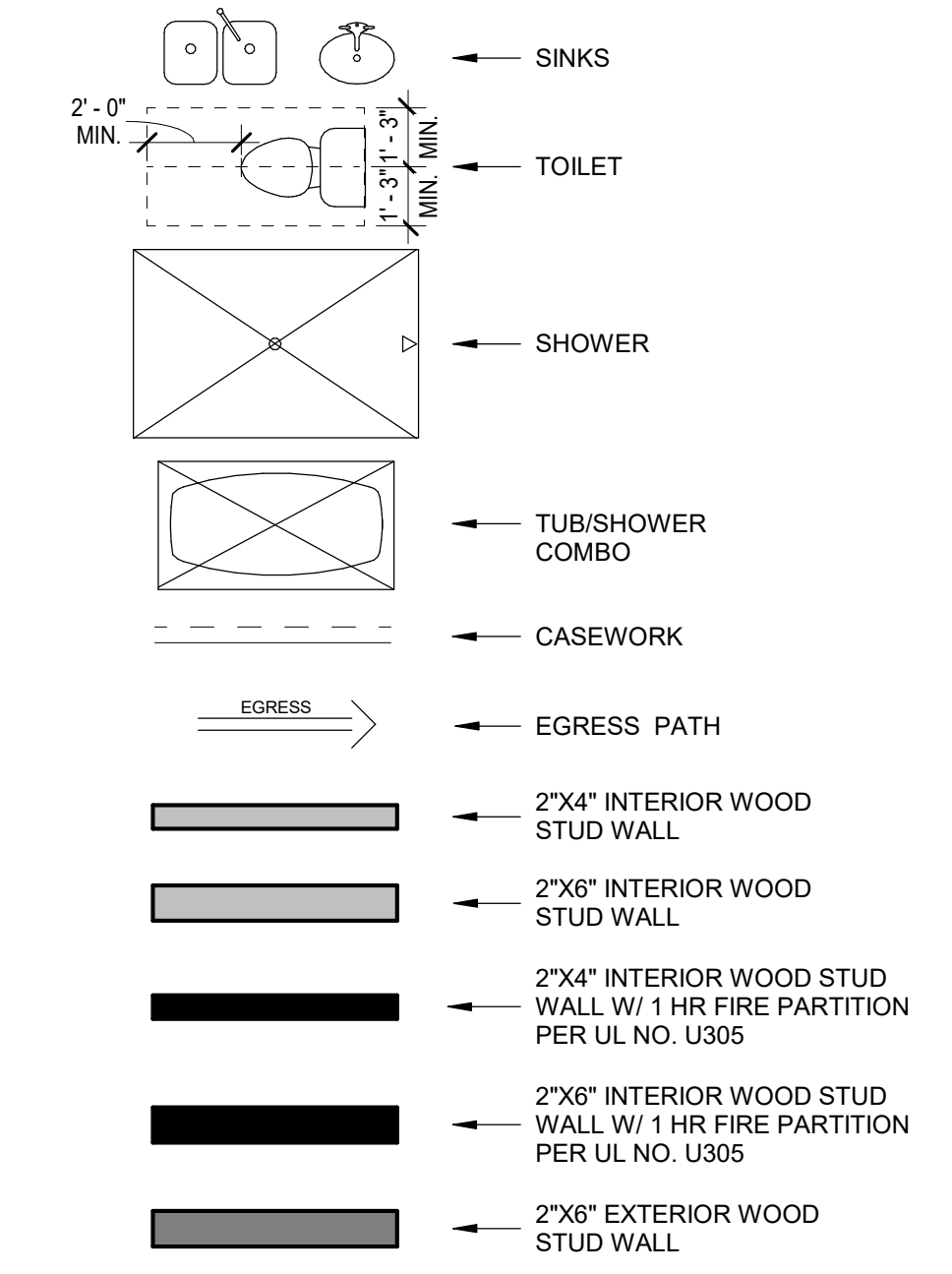
FLOOR PLAN GENERAL NOTES

- GAS LINES:
GAS PIPING PLACED UNDER ANY CONCRETE SLAB SHALL COMPLY PER IFGC 404.14 REQUIREMENTS. SHALL CONFORM TO IFGC SECTION 403 FOR MATERIALS, INSTALLATION, AND TESTING.
- VERIFY AND MAINTAIN REQUIRED HORIZONTAL AND VERTICAL CLEARANCES ABOVE THE FINISHED COUNTERTOP SURFACE BEFORE ORDERING OR INSTALLING CABINETS.
- MAXIMUM STUD SPACING IS 16 INCHES ON CENTER UNLESS NOTED OTHERWISE
- REFER TO STRUCTURAL DRAWINGS FOR LOCATIONS AND ADDITIONAL REQUIREMENTS FOR LOAD-BEARING AND SHEAR WALLS
- TYPICAL GYPSUM SHEATHING THICKNESS IS 5/8 INCH UNLESS NOTED OTHERWISE
- PROVIDE A LISTED AND APPROVED RANGE OR COOKTOP UNIT AND INSTALL PER MANUF. REQUIREMENTS. RANGES AND COOKTOPS ARE TO BE MANUFACTURER WOLF OR SIMILAR.

FLOOR PLAN KEYNOTES

- PROVIDE TILE SURFACE AT WALLS SHOWN WITH BOLD DASHED LINE PER IRC R708.2. TILE SURFACE SHALL EXTEND A MINIMUM OF 6 FEET ABOVE FINISHED FLOOR HEIGHT.
- PROVIDE 1-RATED WALL ASSEMBLY AS NOTED. REFER TO RATED WALL ASSEMBLY DETAIL 12 ON SHEET A502.
- OVERHANG OF ROOF FROM LEVEL ABOVE.
- ALL WEATHER LANDING SURFACE EQUAL IN WIDTH TO THE DOOR SERVED AND MIN. 36" DEEP IN DIRECTION OF TRAVEL AT ALL EXTERIOR DOORS PER IRC R311.3.
- 36" MIN. HEIGHT GUARDRAIL W/ 4" MAX VERTICAL SPACING OF HORIZONTAL RUNGS. GUARDRAIL TO SUPPORT 200# CONCENTRATED LOAD / 50# UNIFORM LOAD PER 2018 IRC R312.1.
- PROVIDE CONTINUOUS 1-1/2" DIA. HANDRAIL @ 36" A.F.F. PER IRC R311.7.
- STAIR RISER HEIGHT SHALL BE A MAXIMUM OF 7-3/4" MEASURED VERTICALLY BETWEEN LEADING EDGES OF ADJACENT TREADS PER IRC R311.7.
- OPEN RISERS CANNOT PERMIT THE PASSAGE OF A 4" SPHERE BETWEEN TREADS PER IRC R311.7.
- MIN. STAIR TREAD DEPTH IS 10" MEASURED HORIZONTALLY BETWEEN VERTICAL PLANES OF THE FOREMOST PROJECTION OF ADJACENT TREADS PER IRC R311.7.
- PROFILE OF TREAD: RADIUS OF LEADING EDGE OF TREAD SHALL BE NO GREATER THAN 9/16". A NOSING NOT LESS THAN 3/4" BUT NOT MORE THAN 1 1/4" SHALL BE PROVIDED ON STAIRWAYS WITH SOLID RISERS PER IRC R311.7.
- GAS FIREPLACE INSTALL PER IRC R1004 AND R1005 COMBUSTION AIR PROVIDED PER IRC R1006. REFER TO FIREPLACE SPECS ON SHEET A503.
- METAL ROOF SCUPPER W/ DOWNSPOUT.
- 4"x6" MIN. THRU-WALL SCUPPER.
- TANKLESS GAS WATER HEATER. SEE PLUMBING.
- HEAT PUMP. SEE MECHANICAL.
- TRASH / RECYCLING BINS.
- GAS METER. SEE PLUMBING.
- 400 AMP ELECTRICAL PANEL. SEE ELECTRICAL.
- AIR HANDLER. SEE MECHANICAL.
- SOFT WATER LOOP.
- WATER SOFTENER EQUIPMENT.
- 4" DIAMETER CONDUIT FROM ELECTRICAL PANEL TO ROOF FOR FUTURE SOLAR ARRAY. SEE ELECTRICAL.
- 2" FLOOR DRAIN W/ LEADER DOWN TO LOWER LEVEL. NOT TO BE CONNECTED TO SEWER SYSTEM.
- INTERNAL GUTTER.
- WATERPROOF DECKING SYSTEM ICC-ES REPORT ESR-2151.
- FOAM ROOF PER ICC-ES REPORT ESR-2532 MANUFACTURER: SWD URETHANE
- POLY-DECK 150 PER ICC-ES REPORT ESR-2785 W/ LOW-PROFILE PEDESTAL LEVELING SYSTEM.
- DECORATIVE 2"x6", OR SIMILAR, HEMLOCK SHADE FINS. SPACED 6" O.C.

FLOOR PLAN LEGEND



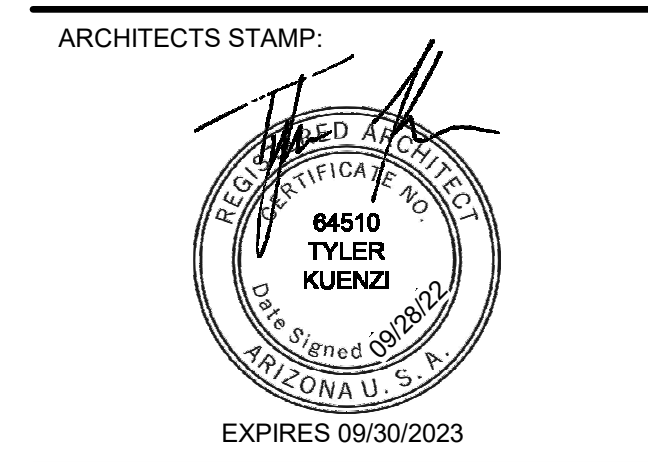
DESIGNTANK ©
1640 E BETHANY HOME ROAD
PHOENIX, AZ 85016
503.560.5626

CONSULTANT:

PERMIT SET

PALMAIRE - LOT 5
 1827 E PALMAIRE AVE, PHOENIX, AZ 85020

REVISION	DATE	REASON FOR ISSUE

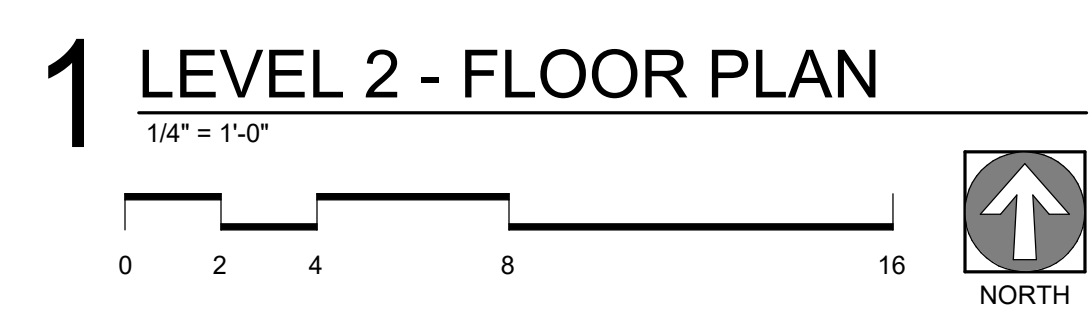
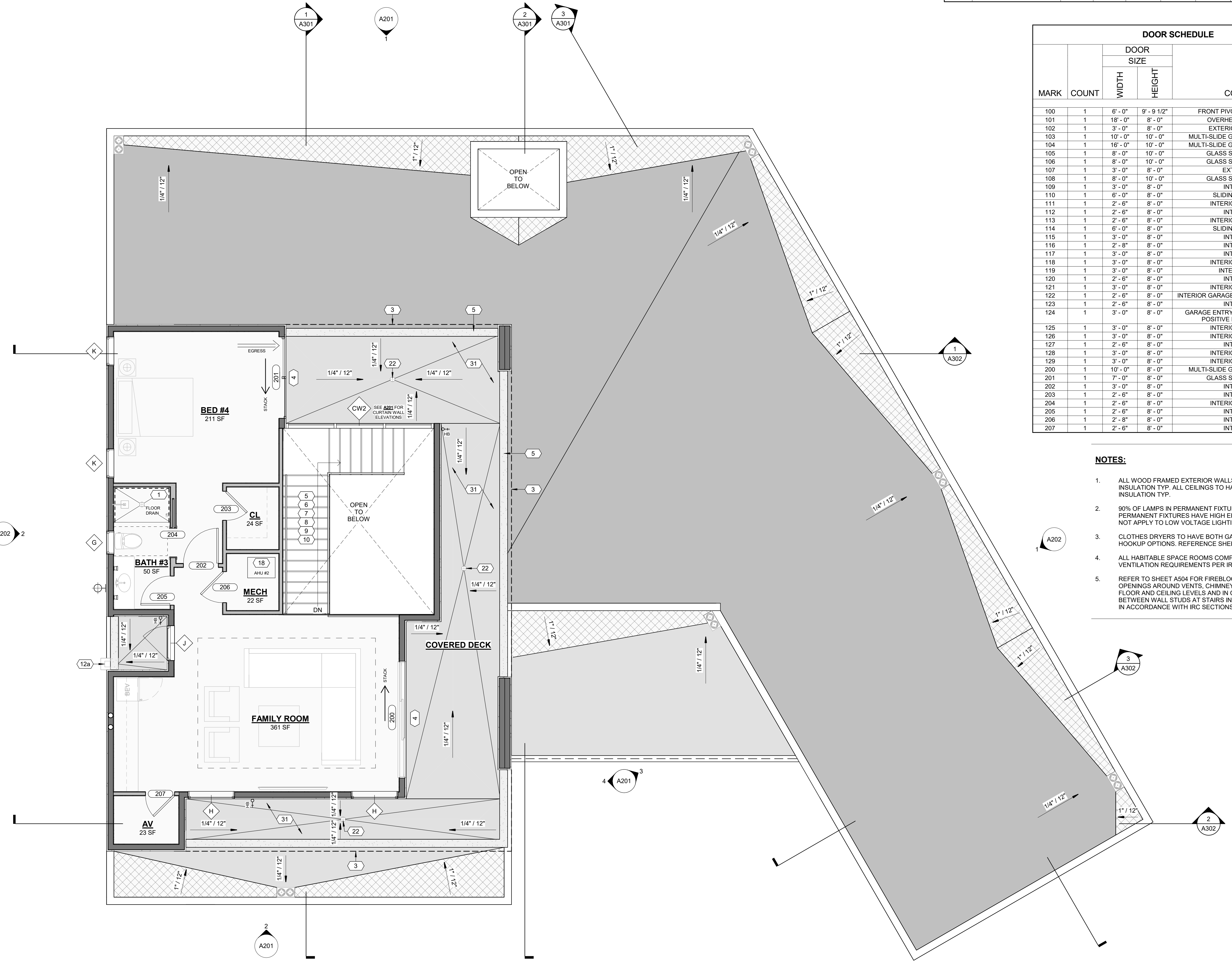


FLOOR PLAN - LEVEL 2

CITY OF PHOENIX
PLANNING & DEVELOPMENT DEPARTMENT
SELF-CERTIFIED PLANS
OFFICIAL CONSTRUCTION SET
11/29/2022

This set of plans shall be kept at the construction site. Acceptance of these plans shall prevent the Building Official from requiring correction of errors in the plans where such errors are subsequently found to be in violation of any law or ordinance.

DATE	REVISION
2022-09-28	
SCALE	SHEET NUMBER
1/4" = 1'-0"	A104
SHEET SIZE	
30" X 42"	



SELF-CERTIFIED BY: KENT A. BARBER, P.E., S.E. 11/16/2022
 PLANS WERE PREPARED BY OR UNDER THE DIRECT SUPERVISION OF
 TYLER KUENNZ, REGISTERED PROFESSIONAL ENGINEER
 THE PLANS ARE AS OF THE DATE OF SUBMISSION. IN COMPLIANCE
 WITH CITY OF PHOENIX BUILDING, CIVIL, SITE AND ZONING CODES,
 ORDINANCES, AND ALL OTHER APPLICABLE LAWS.