

2/22/2022 11:20:35 AM

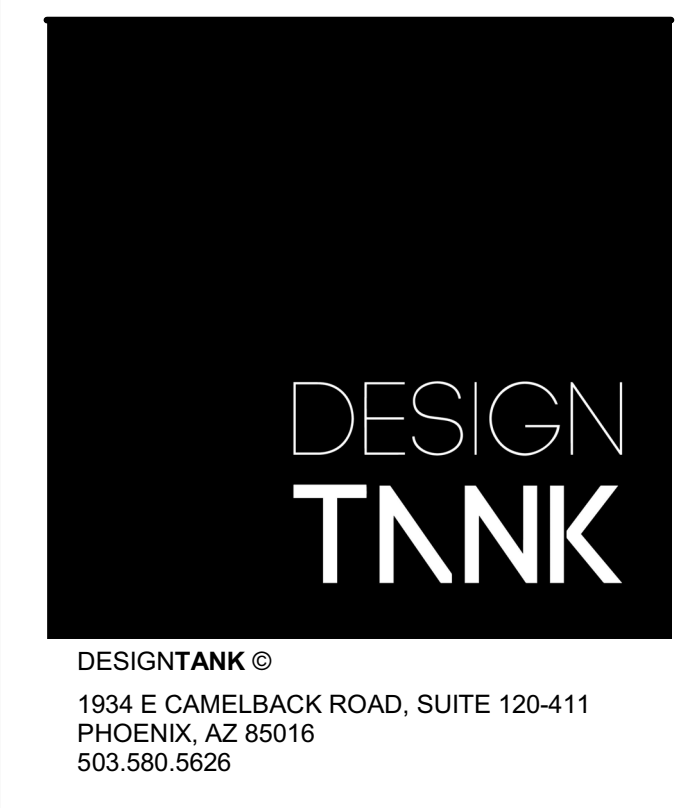
EXTERIOR  
INTERIOR

DOOR SCHEDULE				
Mark	Count	DOOR SIZE		COMMENTS
		WIDTH	HEIGHT	
01T	1	3'-6"	8'-0"	tempered
08T	1	8'-0"	8'-0"	tempered
11T	1	18'-0"	8'-0"	tempered
12	1	18'-0"	8'-0"	
102	1	4'-0"	8'-0"	
103	1	2'-0"	8'-0"	
104	1	2'-6"	8'-0"	
105	1	2'-8"	8'-0"	
106	1	2'-6"	8'-0"	
107	1	4'-0"	8'-0"	
109	1	3'-0"	8'-0"	Garage entry door -45 min. rated self closing door with gasket
113	1	3'-0"	8'-0"	
114	1	4'-0"	8'-0"	
115	1	2'-6"	8'-0"	
116	1	2'-6"	8'-0"	
202	1	2'-8"	8'-0"	
203	1	2'-6"	8'-0"	
204	1	2'-8"	8'-0"	
205	1	2'-8"	8'-0"	
207	1	2'-6"	8'-0"	
208	1	2'-6"	8'-0"	
209	1	2'-6"	8'-0"	
210	1	5'-0"	7'-0"	
211	1	2'-6"	8'-0"	
212	1	2'-8"	8'-0"	
213	1	6'-0"	8'-0"	
214	1	3'-0"	8'-0"	

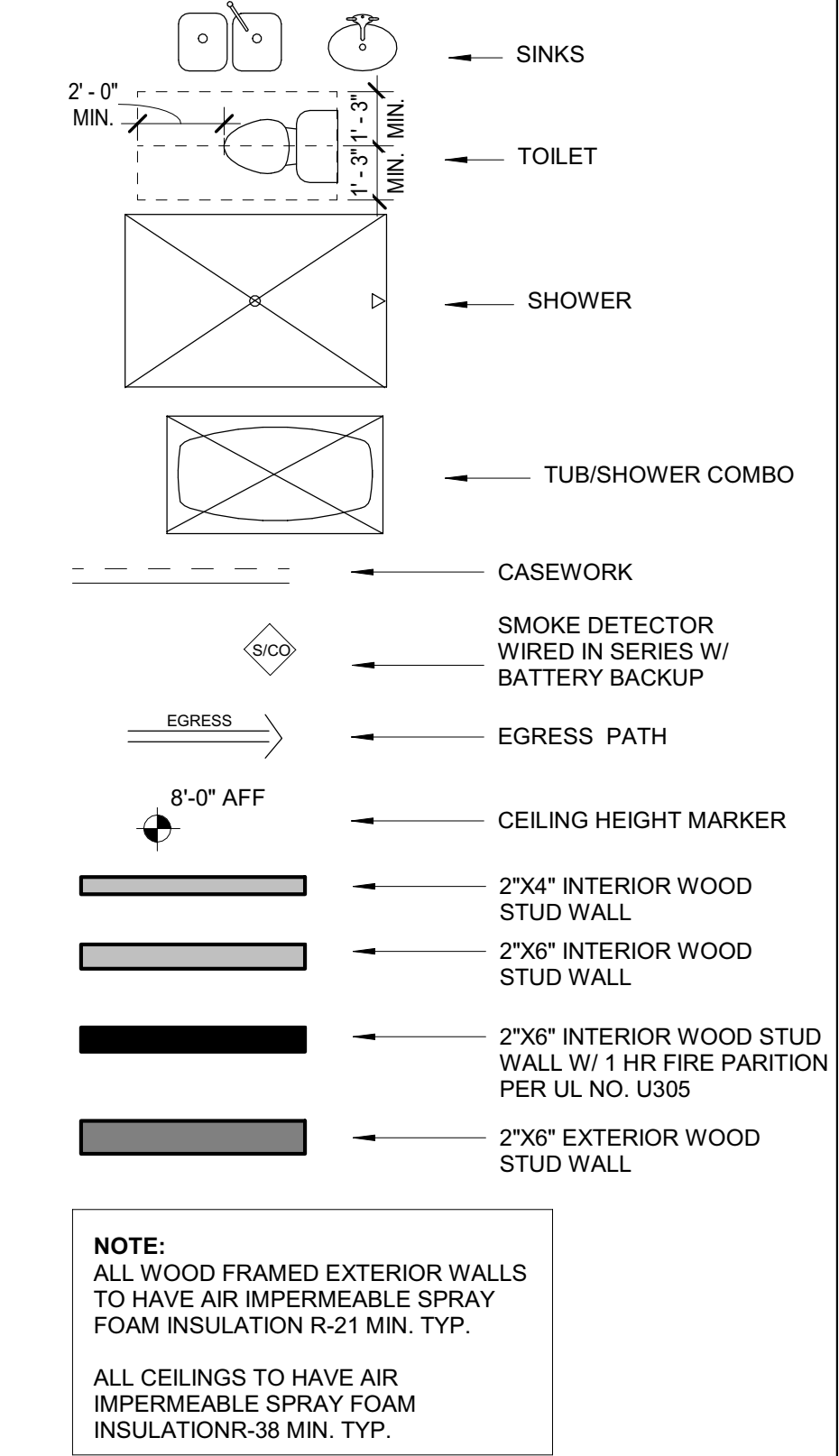
WINDOW SCHEDULE						
Mark	Qty	Window Type	Width	Height	Head Height	Comments
B8	1	Fixed	1'-4"	5'-0"	8'-0"	
B	1	Window-Casement-Single_Right	3'-0"	5'-6"	9'-0"	
C	11	Fixed	2'-0"	3'-0"	<varies>	
D	5	Fixed	1'-6"	2'-0"	9'-0"	
F	2	Fixed	3'-0"	8'-0"	7'-0"	
GT	1	Fixed	5'-0"	5'-0"	8'-0"	tempered
M	3	Window-Casement-Single_Right	3'-0"	5'-0"	<varies>	
N	1	Fixed	2'-0"	3'-6"	7'-0"	
P	3	Window-Casement-Single_Left	3'-0"	5'-0"	7'-0"	
Q	1	Fixed	1'-6"	3'-0"	8'-0"	
TT	1	Fixed	1'-6"	3'-0"	8'-0"	tempered
X	1	Fixed	3'-6"	6'-0"	5'-0"	
Y	1	Fixed	3'-6"	2'-0"	19'-0"	

FLOOR PLAN GENERAL NOTES:

1. GAS LINES: GAS PIPING PLACED UNDER ANY CONCRETE SLAB SHALL COMPLY PER UPC 1210.1.6 REQUIREMENTS. SHALL CONFORM TO U.P.C. CHAPTER 12 FOR MATERIALS, INSTALLATION, AND TESTING.
2. RANGES AND COOKTOPS: Provide a listed and approved range and/or cooktop unit installed in accordance with the listing and with the manufacturer's installation instructions.
3. VERIFY AND MAINTAIN REQUIRED HORIZONTAL AND VERTICAL CLEARANCES ABOVE THE FINISHED COUNTERTOP SURFACE BEFORE ORDERING OR INSTALLING CABINETS.
4. MAXIMUM STUD SPACING IS 16 INCHES ON CENTER UNLESS NOTED OTHERWISE.
5. REFER TO STRUCTURAL DRAWINGS FOR LOCATIONS AND ADDITIONAL REQUIREMENTS FOR LOAD-BEARING AND SHEAR WALLS.
6. TYPICAL GYPSUM SHEATHING THICKNESS IS 5/8" INCH UNLESS NOTED OTHERWISE.
7. SEE DETAIL 9 ON A110 FOR STUCCO SYSTEM ASSEMBLY.



FLOOR PLAN LEGEND



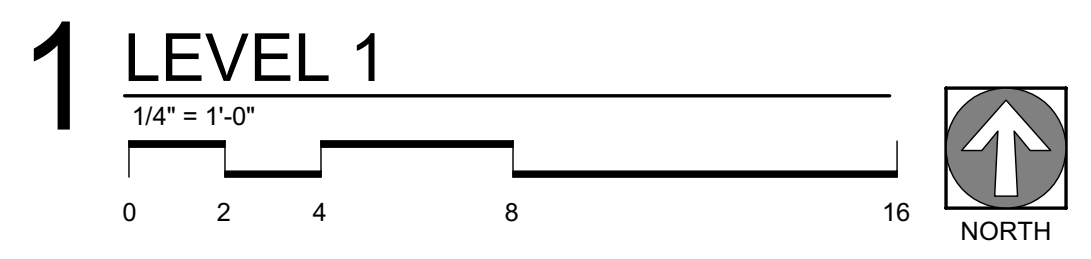
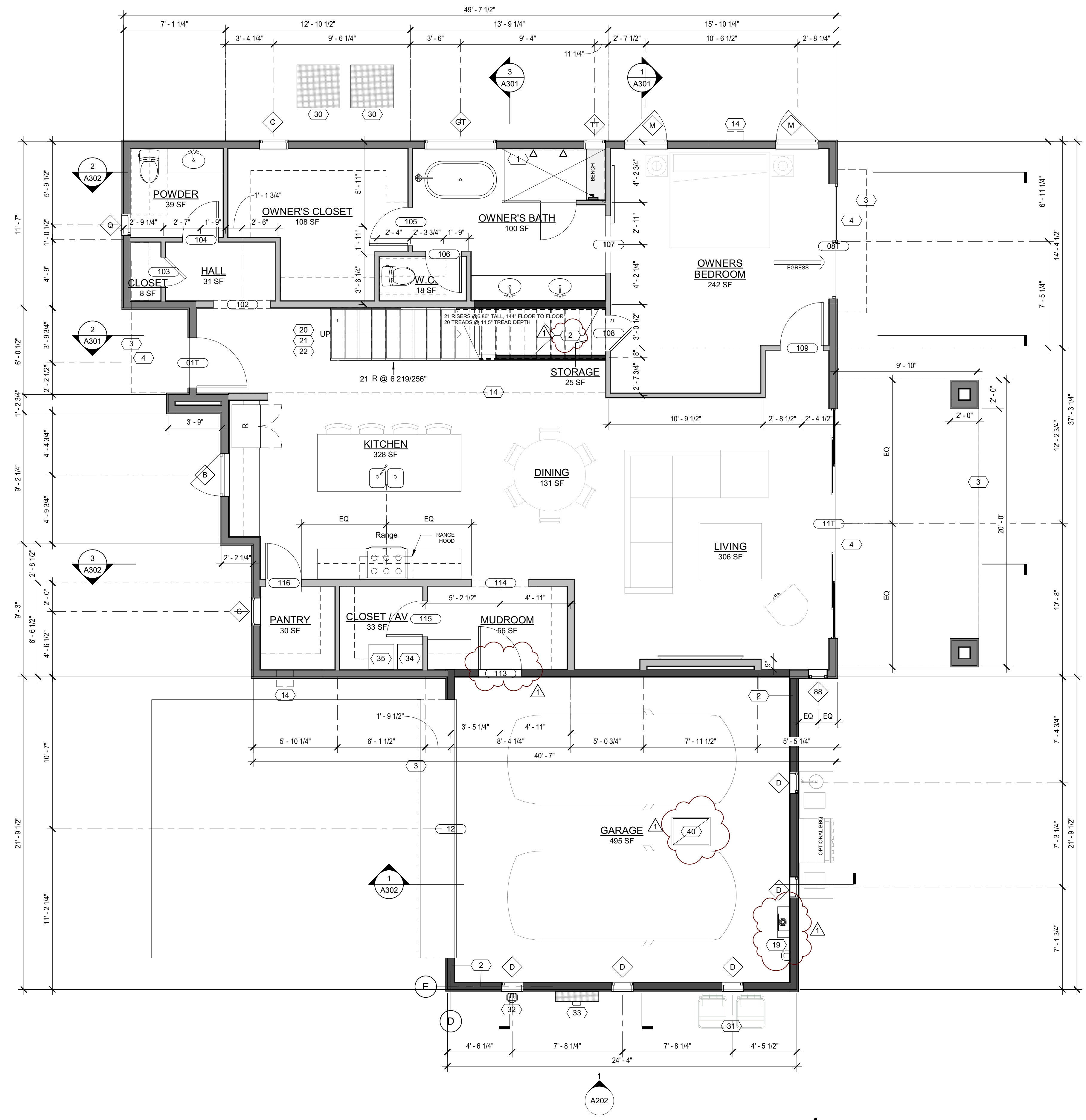
NOTE: ALL WOOD FRAMED EXTERIOR WALLS TO HAVE AIR IMPERMEABLE SPRAY FOAM INSULATION R-21 MIN. TYP.

NOTE: ALL CEILINGS TO HAVE AIR IMPERMEABLE SPRAY FOAM INSULATION R-38 MIN. TYP.

NOTE: 90% OF LAMPS IN PERMANENT FIXTURES OR 90% OF PERMANENT FIXTURES HAVE HIGH EFFICACY LAMPS. DOES NOT APPLY TO LOW VOLTAGE LIGHTING

KEYNOTES

- 1 PROVIDE TILE SURFACE AT WALLS SHOWN WITH BOLD DASHED LINE PER IRC R708.2. TILE SURFACE SHALL EXTEND A MINIMUM OF 6 FEET ABOVE FINISHED FLOOR HEIGHT.
- 2 PROVIDE 1-RATED WALL ASSEMBLY AS NOTED, REFER TO BATER WALL ASSEMBLY DETAIL 9 ON SHEET A502.
- 3 OVERHANG ABOVE OF FLOOR/ROOF
- 4 ALL WEATHER LANDING SURFACE EQUAL IN WIDTH TO THE DOOR SERVED AND MIN. 36" DEEP IN DIRECTION OF TRAVEL AT ALL EXTERIOR DOORS PER IRC R311.3
- 14 ROOF SCUPPER
- 19 TANKLESS WATER HEATER AND SOFT WATER LOOP. TANKLESS WATER HEATER MINIMUM CLEARANCE 6 FT ABOVE FINISH FLOOR
- 20 36" MIN. HEIGHT GAUDDRAIL WITH MAX VERTICAL SPACING OF HORIZONTAL RUNGS. GAUDDRAIL TO SUPPORT 200# CONCENTRATED LOAD / 50# UNIFORM LOAD
- 21 OPEN RISERS CANNOT PERMIT THE PASSAGE OF A 4 SPHERE BETWEEN TREADS.
- 22 PROFILE OF TREAD: RADIUS OF LEADING EDGE OF TREAD SHALL BE NO GREATER THAN 9/16". A NOSING NOT LESS THAN 3/4" BUT NOT MORE THAN 1 1/4" SHALL BE PROVIDED ON STAIRWAYS WITH SOLID RISERS.
- 30 HEAT PUMP - SEE MECH.
- 31 TRASH/RECYCLING BINS
- 32 GAS METER, SEE PLUMBING
- 33 ELECTRICAL PANEL, SEE ELEC.
- 34 AIR HANDLER, SEE MECH.
- 35 AV RACK 20"x20"
- 40 ATTIC ACCESS PANEL MIN 22"x30" PER IRC R807



CASA AZUL LOT 1

6345 N 10th Drive Phoenix, AZ 85013

REVISION	DATE	REASON FOR ISSUE
1	02/22/2022	City Comments



FIRST FLOOR PLAN AND SCHEDULES

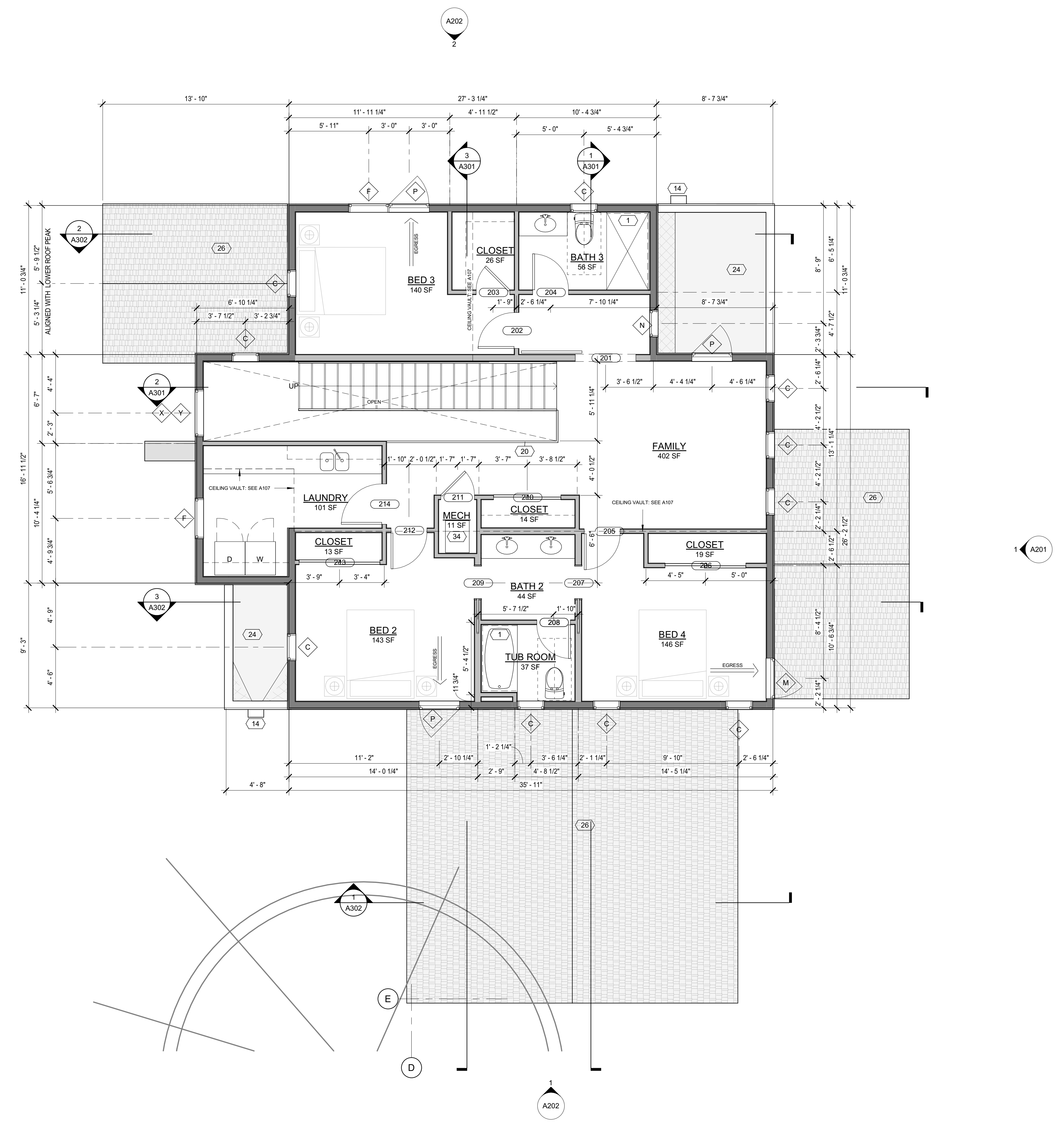
PERMIT SET

DATE	REVISION
2021-09-28	1
PROJECT NUMBER	SHEET NUMBER
000000	A104
SCALE	As indicated

C:\Users\BentMiller\OneDrive - DesignTANK\Documents - Tyler Kuenzi\3. Files\RD\_Activa\Proyectos\Casa Azul\BIM\1.10222-0221\_Casa Azul\1.dwg



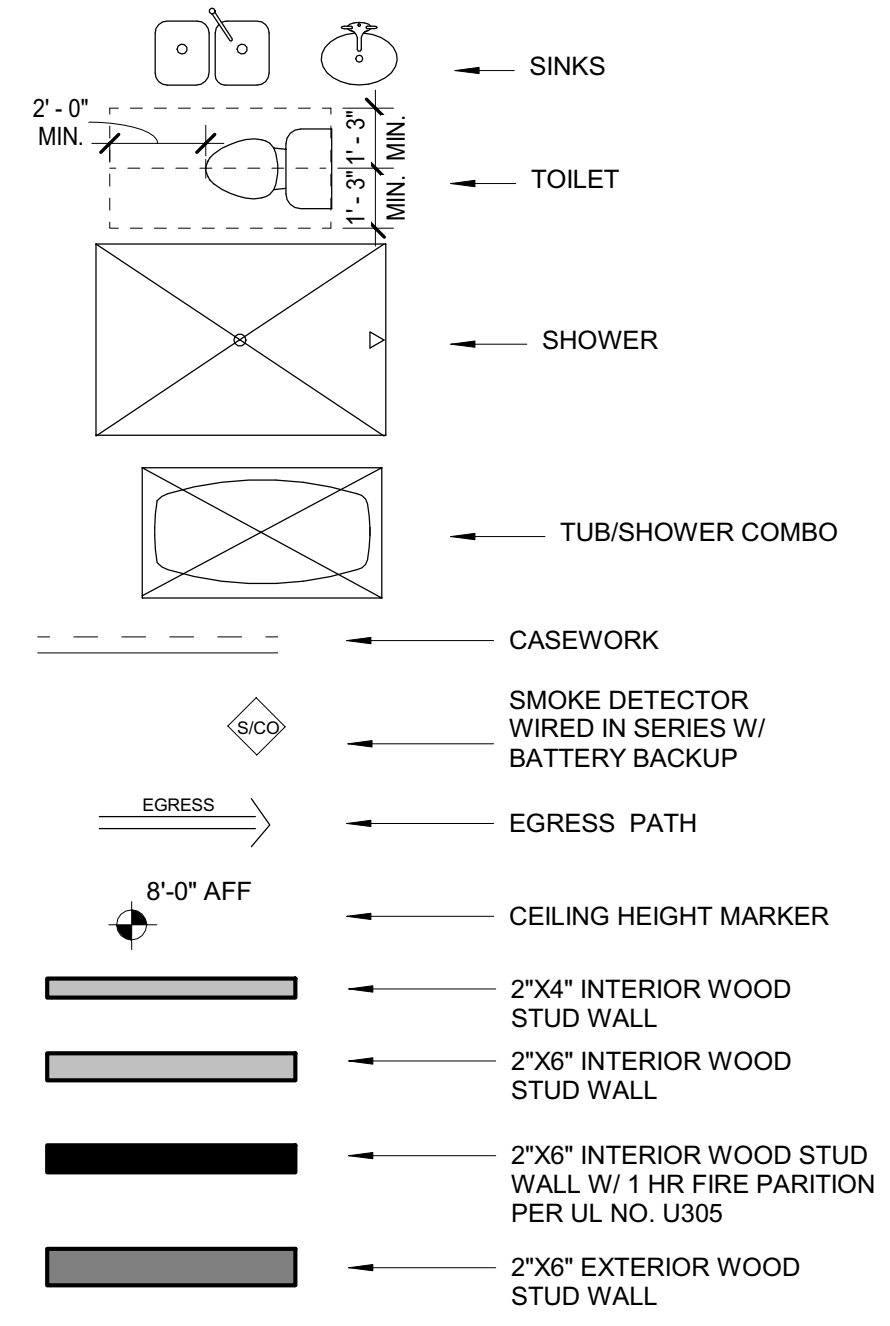
C:\Users\jff\OneDrive - DesignTANK\Documents - Tyler Kuenzi - Revit\00 - Active Projects\Casa Azul\BIM\Lot 1\2021\2021-09-28\Casa Azul Lot 1.rvt



**FLOOR PLAN GENERAL NOTES:**

1. GAS LINES:  
GAS PIPING PLACED UNDER ANY CONCRETE SLAB SHALL COMPLY PER UPC 1210.1.6 REQUIREMENTS.  
SHALL CONFORM TO U.P.C. CHAPTER 12 FOR MATERIALS, INSTALLATION, AND TESTING.
2. RANGES AND COOKTOPS:  
Provide a listed and approved range and/or cooktop unit installed in accordance with the listing and with the manufacturer's installation instructions.
3. VERIFY AND MAINTAIN REQUIRED HORIZONTAL AND VERTICAL CLEARANCES ABOVE THE FINISHED COUNTERTOP SURFACE BEFORE ORDERING OR INSTALLING CABINETS.
4. MAXIMUM STUD SPACING IS 16 INCHES ON CENTER UNLESS NOTED OTHERWISE.
5. REFER TO STRUCTURAL DRAWINGS FOR LOCATIONS AND ADDITIONAL REQUIREMENTS FOR LOAD-BEARING AND SHEAR WALLS.
6. TYPICAL GYPSUM SHEATHING THICKNESS IS 5/8 INCH UNLESS NOTED OTHERWISE.
7. SEE DETAIL 9 ON A110 FOR STUCCO SYSTEM ASSEMBLY.

**FLOOR PLAN LEGEND**



**NOTE:**  
ALL WOOD FRAMED EXTERIOR WALLS TO HAVE AIR IMPERMEABLE SPRAY FOAM INSULATION R-21 MIN. TYP.  
ALL CEILINGS TO HAVE AIR IMPERMEABLE SPRAY FOAM INSULATION R-38 MIN. TYP.

**NOTE:**  
90% OF LAMPS IN PERMANENT FIXTURES OR 90% OF PERMANENT FIXTURES HAVE HIGH EFFICACY LAMPS. DOES NOT APPLY TO LOW VOLTAGE LIGHTING

**KEYNOTES**

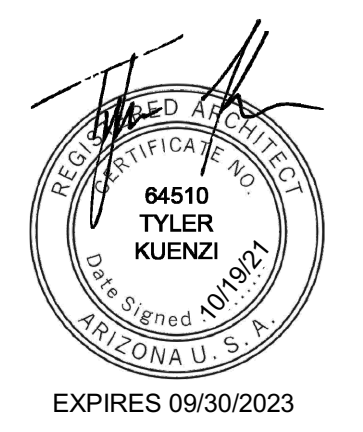
- 14 ROOF SCUPPER
- 20 36 MIN. HEIGHT GAUDDRAIL W/ 4 MAX VERTICAL SPACING OF HORIZONTAL RUNGS. GAUDDRAIL TO SUPPORT 200# CONCENTRATED LOAD / 50# UNIFORM LOAD
- 24 FOAM ROOF PER ICC-ESR REPORT ESR-2532
- 26 ASPHALT SHINGLE ROOF PER ICC-ESR REPORT ESR-1475
- 34 AIR HANDLER, SEE MECH.



**CASA AZUL LOT 1**

6345 N 10th Drive Phoenix, AZ 85013

REVISION	DATE	REASON FOR ISSUE



**SECOND FLOOR PLAN**

**PERMIT SET**

DATE 2021-09-28	REVISION
PROJECT NUMBER 000000	SHEET NUMBER <b>A105</b>
SCALE As indicated	

