

WINDOW SCHEDULE							
MARK	FAMILY	COUNT	WIDTH	HEIGHT	HEAD HEIGHT	SILL HEIGHT	Comments
A	Fixed	5	2'-0"	2'-0"	8'-0"	6'-0"	
A2	Fixed	1	2'-0"	2'-0"	10'-0"	8'-0"	
B	WD - Fixed	1	3'-0"	5'-0"	8'-0"	3'-0"	
C	Fixed	1	3'-0"	10'-0"	10'-0"	0"	TEMPERED
D	Fixed	2	2'-0"	7'-0"	10'-0"	3'-0"	
E	Fixed	1	4'-0"	8'-0"	9'-0"	1'-0"	TEMPERED
F	WD - Fixed	1	3'-0"	6'-0"	8'-0"	2'-0"	
G	WD - Casement-Single-Left	2	3'-0"	5'-0"	8'-0"	3'-0"	EGRESS
J	WD - Awning	3	4'-0"	10'-0"	10'-0"	0"	TEMPERED
M	Fixed	3	3'-0"	3'-0"	9'-0"	6'-0"	
N	Fixed	1	2'-6"	3'-0"	9'-0"	6'-0"	
N2	Fixed	1	2'-6"	3'-0"	10'-0"	7'-0"	
N3	Fixed	1	2'-6"	3'-0"	9'-0"	6'-0"	
N4	Fixed	1	2'-6"	3'-0"	8'-0"	5'-0"	
P	Fixed	2	4'-0"	5'-0"	8'-0"	3'-0"	
R	Fixed	3	4'-0"	6'-0"	8'-0"	2'-0"	
S	WD - Fixed	2	3'-0"	8'-0"	10'-0"	2'-0"	
S1	WD - Skylight	1	4'-0"	4'-0"			

CURTAIN WALL SCHEDULE				
MARK	LENGTH	OVERALL HEIGHT	AREA	COMMENTS
CW1	8'-2"	10'-0"	81.7 SF	ENTRY
CW2	11 3/4"	10'-0"	9.9 SF	PRIMARY SHOWER
CW3	5'-11"	10'-0"	59.1 SF	PRIMARY SHOWER

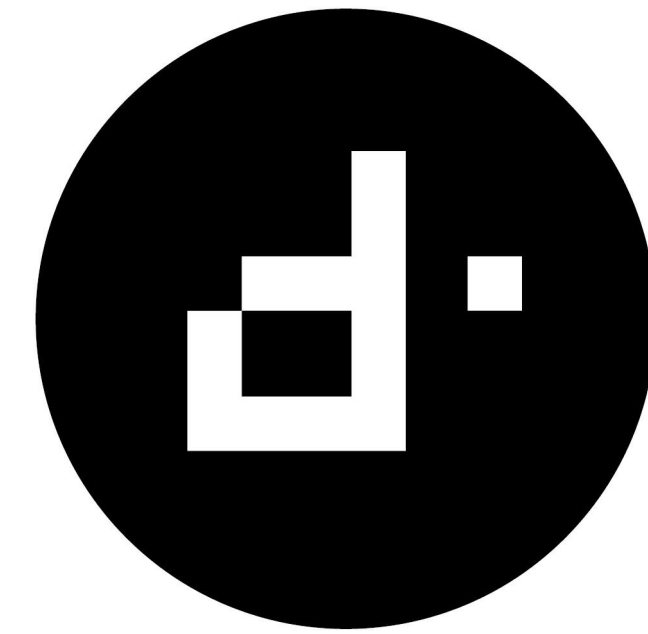
DOOR SCHEDULE					
MARK	COUNT	DOOR SIZE		COMMENTS	
		WIDTH	HEIGHT		
100	1	5'-0"	9'-9 1/2"	FRONT GLASS PIVOT DOOR - TEMPERED	
101	1	18'-0"	8'-0"	OVERHEAD GARAGE DOOR	
102	1	2'-8"	8'-0"	EXTERIOR DOOR	
103	1	8'-0"	10'-0"	GLASS SLIDER - TEMPERED	
104	1	16'-0"	10'-0"	MULTI-SLIDE GLASS DOOR - TEMPERED	
105	1	3'-0"	8'-0"	INTERIOR DOOR	
106	1	14'-11 1/2"	9'-11 3/4"	MULTI-SLIDE GLASS DOOR - TEMPERED	
107	1	14'-11 1/2"	9'-11 3/4"	MULTI-SLIDE GLASS DOOR - TEMPERED	
108	1	2'-6"	6'-0"	EXTERIOR GATE - COURTYARD	
109	1	10'-0"	10'-0"	GLASS SLIDER - TEMPERED	
110	1	3'-0"	8'-0"	EXTERIOR GLASS DOOR - TEMPERED	
111	1	3'-0"	8'-0"	GARAGE ENTRY DOOR - 45-MIN. RATED W/ POSITIVE LATCHING & GASKET	
112	1	8'-0"	10'-0"	GLASS SLIDER - TEMPERED	
113	1	0"	0"	OPENING	
114	1	2'-6"	8'-0"	INTERIOR DOOR	
115	1	3'-6"	8'-0"	INTERIOR DOOR	
116	1	3'-0"	8'-0"	INTERIOR DOOR	
117	1	3'-0"	8'-0"	INTERIOR DOOR	
118	1	2'-6"	8'-0"	INTERIOR DOOR	
120	1	2'-6"	8'-0"	INTERIOR DOOR	
122	1	3'-0"	8'-0"	INTERIOR DOOR	
123	1	3'-0"	8'-0"	OPENING	
124	1	3'-0"	8'-0"	INTERIOR DOOR	
125	1	2'-8"	8'-0"	INTERIOR DOOR	
126	1	2'-8"	8'-0"	INTERIOR DOOR	
127	1	3'-0"	8'-0"	INTERIOR DOOR	
129	1	5'-0"	8'-0"	INTERIOR BARN DOOR	
131	1	3'-0"	8'-0"	INTERIOR BARN DOOR	
132	1	2'-6"	8'-0"	INTERIOR DOOR	

DOOR SCHEDULE					
MARK	COUNT	DOOR SIZE		COMMENTS	
		WIDTH	HEIGHT		
201	1	16'-0"	8'-0"	MULTI-SLIDE GLASS DOOR - TEMPERED	
202	1	0"	0"	OPENING	
203	1	2'-8"	8'-0"	INTERIOR DOOR	
204	1	2'-8"	8'-0"	INTERIOR DOOR	
205	1	2'-6"	8'-0"	INTERIOR DOOR	
206	1	3'-0"	8'-0"	INTERIOR DOOR	
207	1	2'-6"	8'-0"	INTERIOR DOOR	
208	1	3'-0"	8'-0"	INTERIOR DOOR	
209	1	2'-6"	8'-0"	INTERIOR DOOR	
210	1	2'-6"	8'-0"	INTERIOR DOOR	

ELEVATION KEYNOTES

- 36" MIN. HEIGHT GUARDRAIL W/ 4" MAX VERTICAL SPACING OF HORIZONTAL RUNGS. GUARDRAIL TO SUPPORT 200# CONCENTRATED LOAD / 50# UNIFORM LOAD PER IRC 2018 R312.1.
- 4"x6" MIN. METAL THRU-WALL ROOF SCUPPER W/ DOWNSPOUT.
- 4"x6" MIN. METAL THRU-WALL SCUPPER.
- EXTERIOR STUCCO SYSTEM (TYP) PER ICC-ES REPORT ESR-1471 OVER 1" INSULATION BOARD AND WEATHER BARRIER (DUPONT TYVEK STUCCO WRAP PER ICC-ESR 2375).
- MASONRY VENEER PER ICC-ES REPORT ESR-4330.
- EXTERIOR WOOD OR FIBER CEMENT RAINSCREEN WALL SYSTEM (TYP) PER ICC-ES REPORT ESR-3910.
- VELLUX CURB MOUNTED SKYLIGHT PER UNIFORM ICC-ES REPORT ER-0199 TYP.
- CONTROL JOINT TYP.
- BREAK METAL FLASHING AND TRIM
- N/A
- EXTERIOR CMU WALL PER STRUCTURAL.
- DECORATIVE 2"x6", OR SIMILAR, HEMLOCK SHADE FIN. SPACED 6" O.C.
- METAL PANEL SCREEN ON STEEL FRAME.
- N/A
- N/A

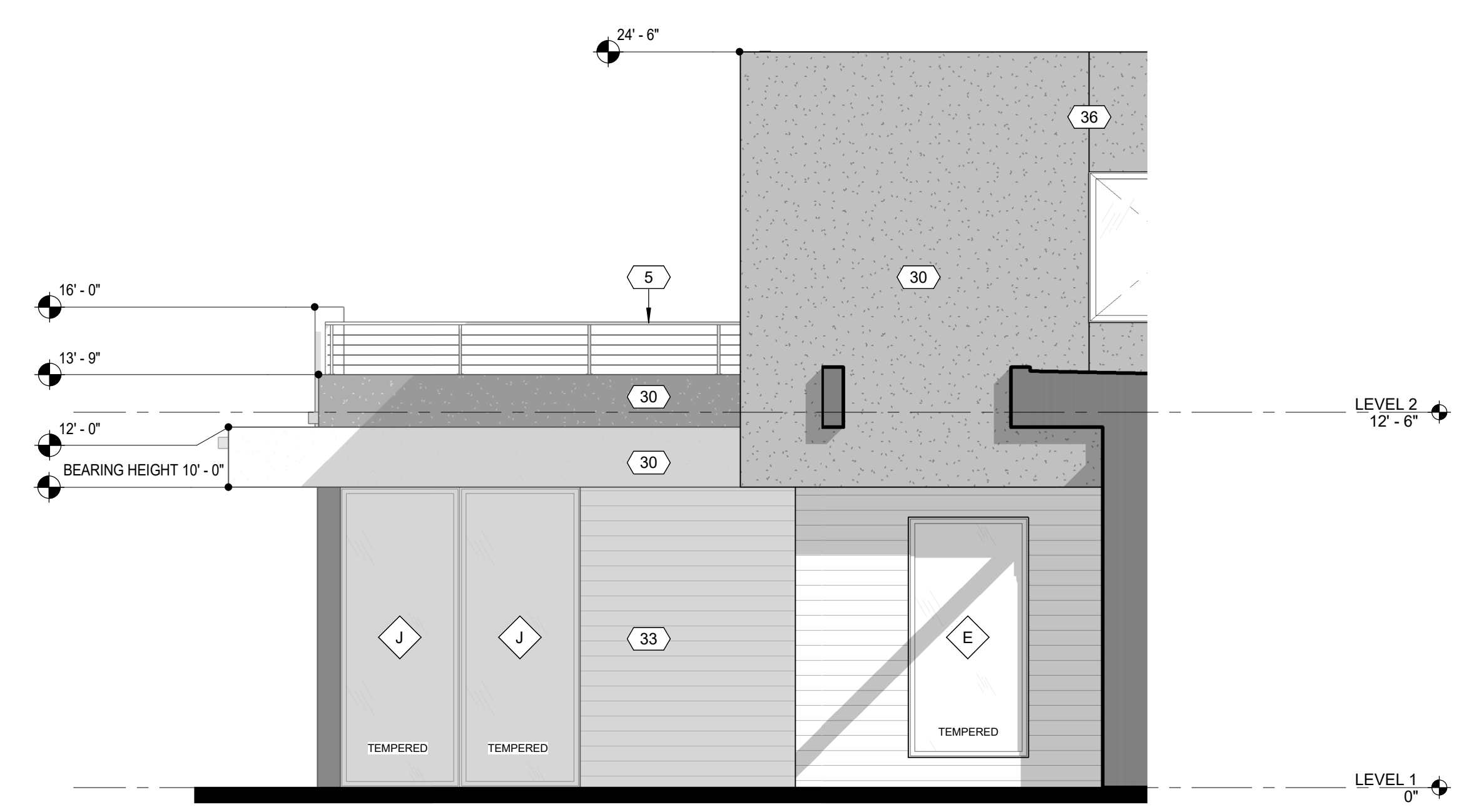
\*NOTE: BUILDING ADDRESS SHALL BE PERMANENT, VISIBLE FROM STREET, AND A MINIMUM 4 INCH HIGH WITH A STROKE WIDTH OF A HALF INCH.



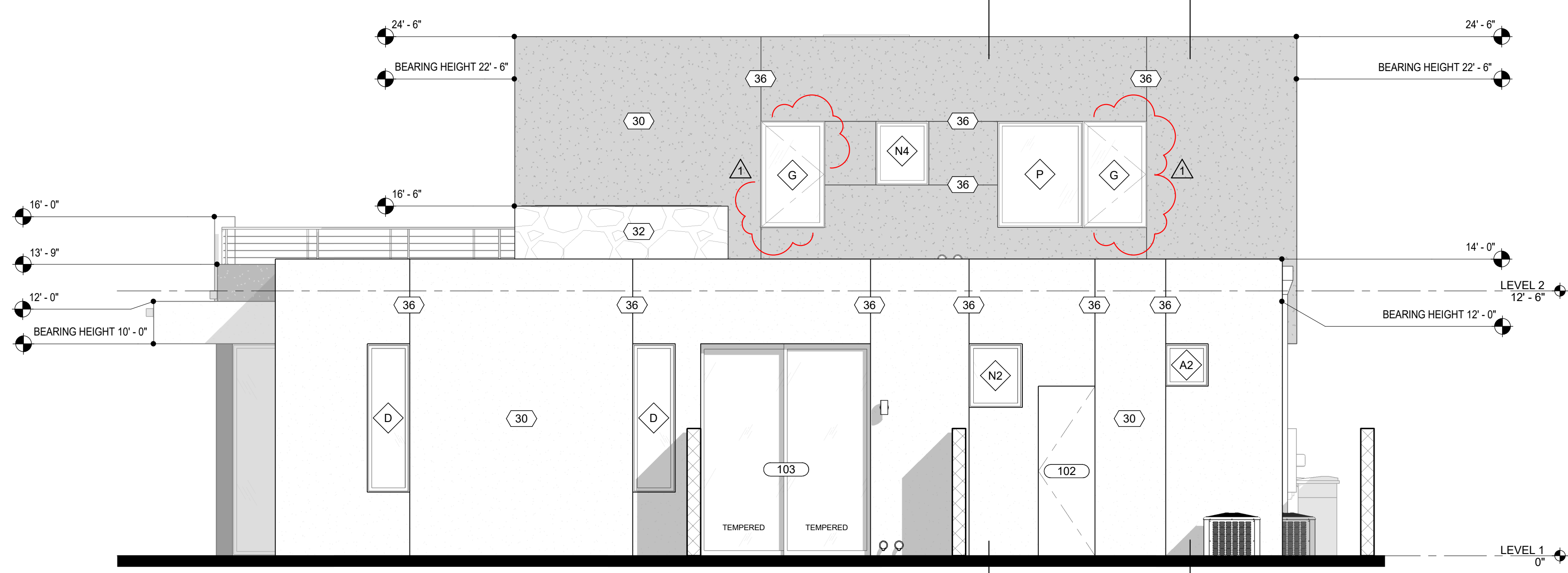
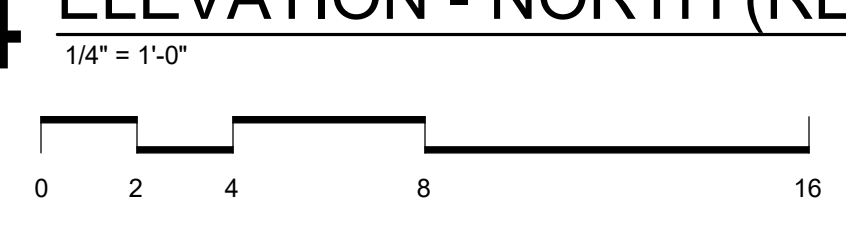
designtank ©  
1640 E BETHANY HOME ROAD  
PHOENIX, AZ 85016  
503.560.5626

CONSULTANT:

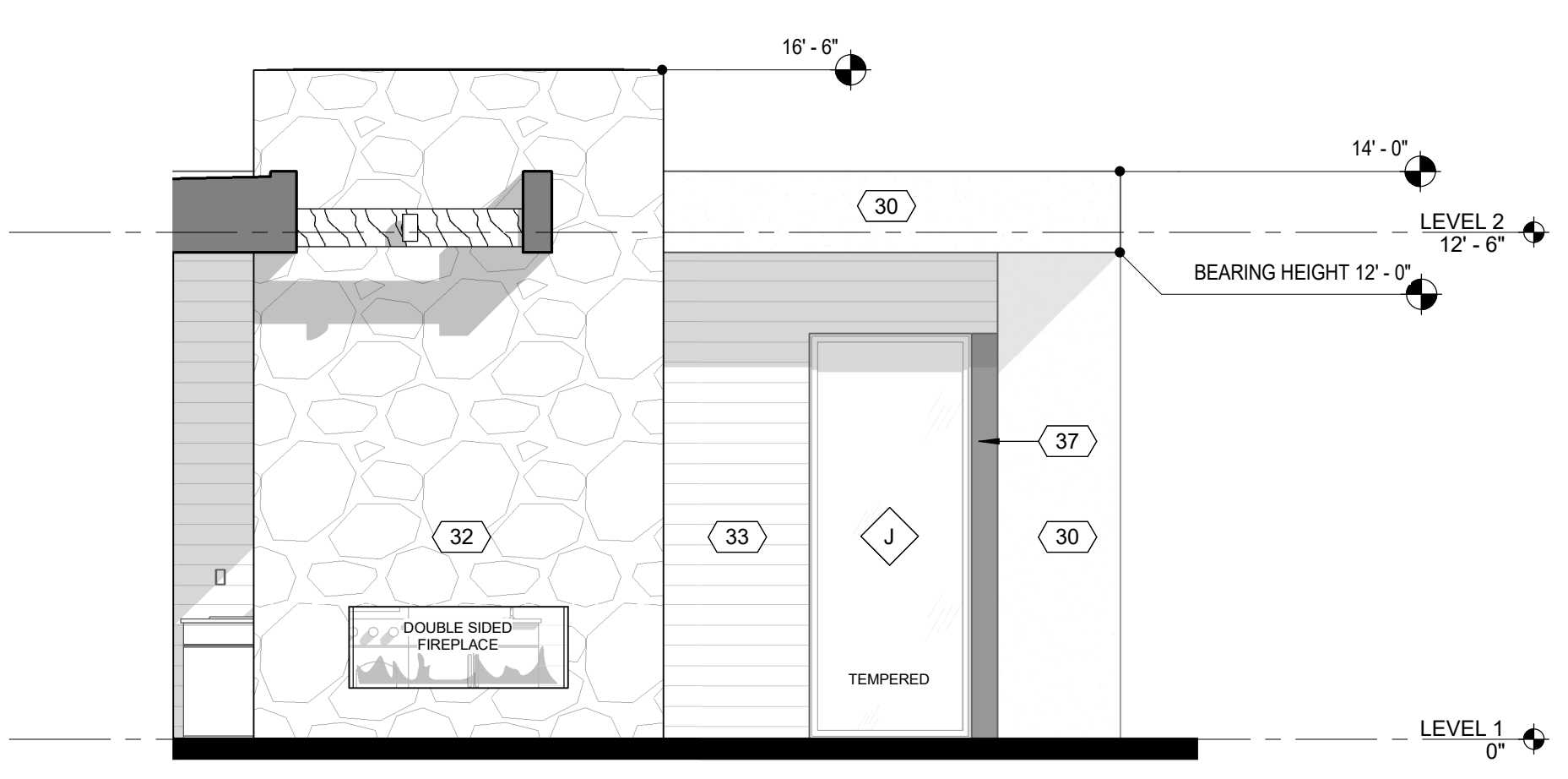
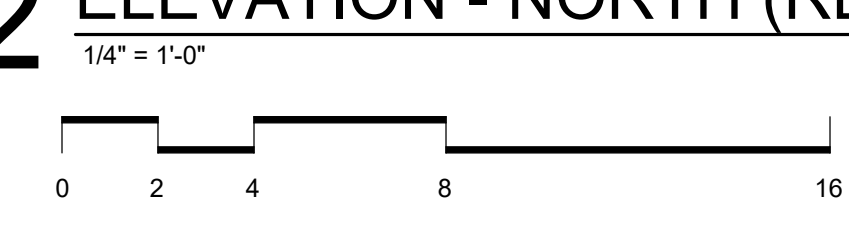
PERMIT SET



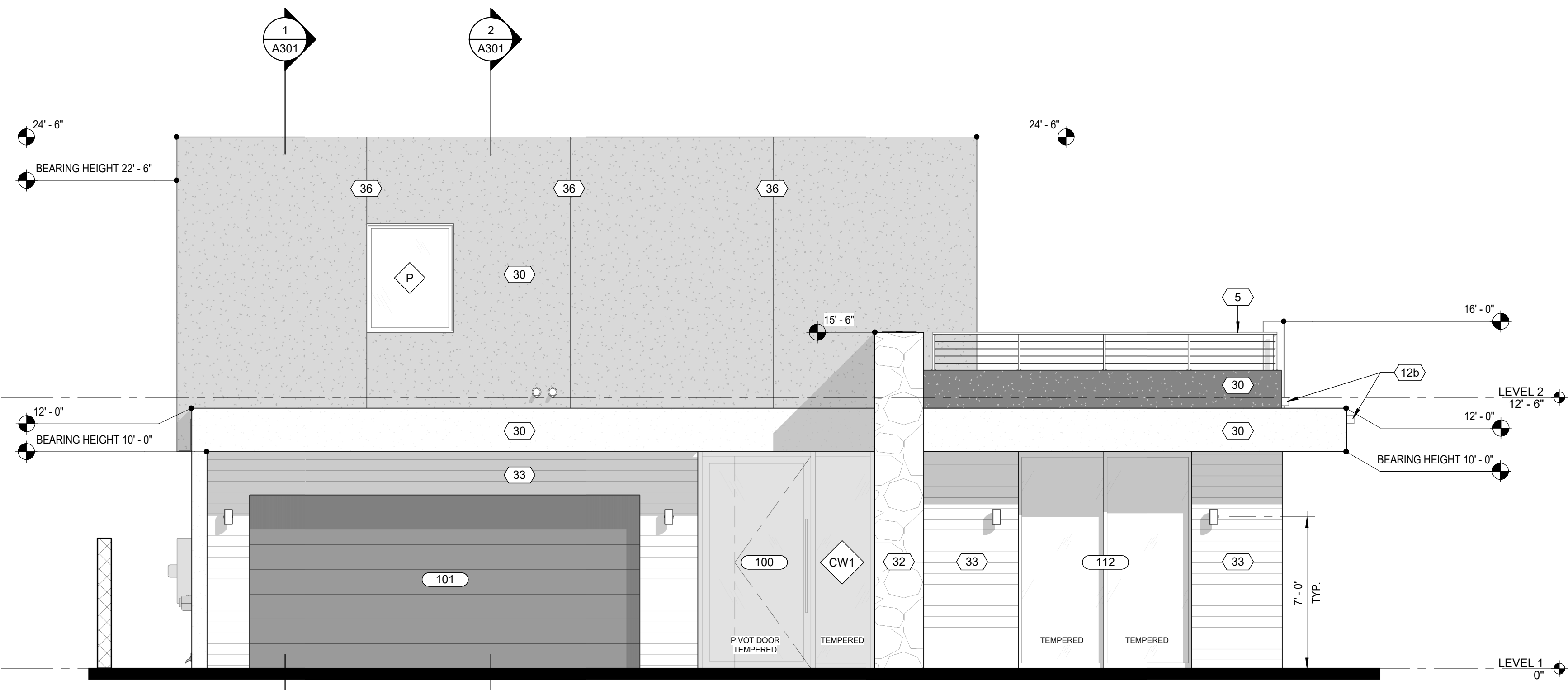
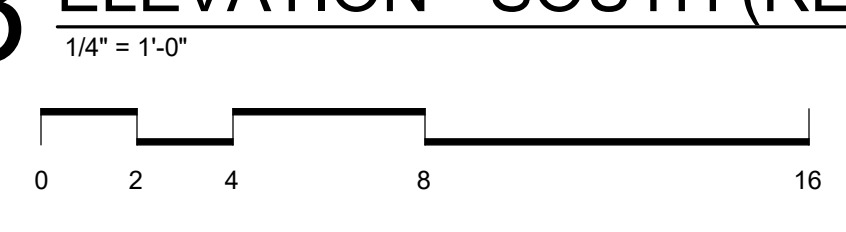
4 ELEVATION - NORTH (REAR YARD)



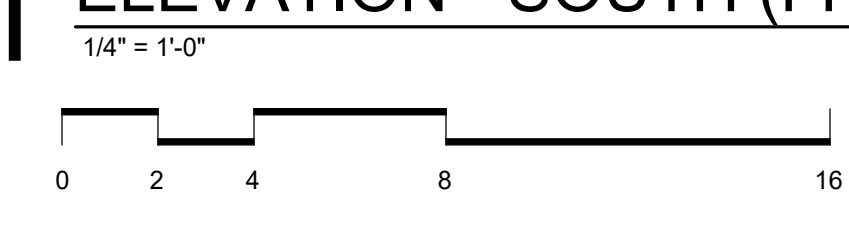
2 ELEVATION - NORTH (REAR)



3 ELEVATION - SOUTH (REAR YARD)



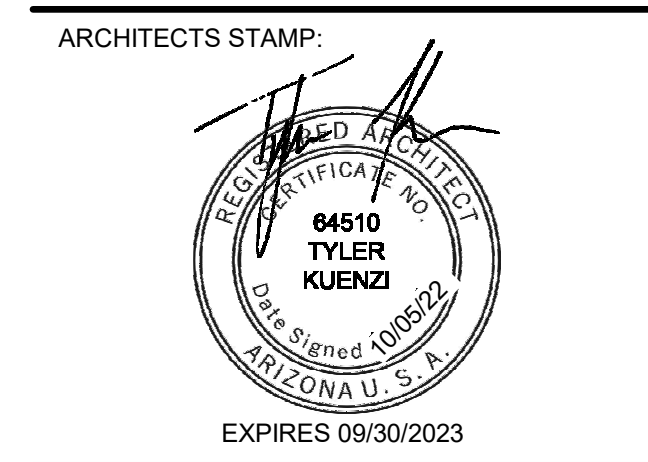
1 ELEVATION - SOUTH (FRONT)



TWO STORY RESIDENCE

PALMAIRE 'B'

REVISION	DATE	REASON FOR ISSUE
1	2022-11-17	COP ROUND 1 COMMENTS



BUILDING ELEVATIONS

CITY OF PHOENIX  
Planning and Development Department  
By: Patrick B. Morley  
01/10/2023  
This set of plans has been reviewed for PHOENIX CONSTRUCTION CODE requirements prior to issuance of Building Permit and shall be kept at the construction site. Such review shall not prevent the Building Official from requiring correction of errors in the plans where such errors are subsequently found to be in violation of any law or ordinance.

DATE	REVISION
2022-10-05	1

SCALE  
1/4" = 1'-0"  
SHEET SIZE  
30" X 42"

SHEET NUMBER  
**A201**



WINDOW SCHEDULE							
MARK	FAMILY	COUNT	WIDTH	HEIGHT	HEAD HEIGHT	SILL HEIGHT	Comments
A	Fixed	5	2'-0"	2'-0"	8'-0"	6'-0"	
A2	Fixed	1	2'-0"	2'-0"	10'-0"	8'-0"	
B	WD - Fixed	1	3'-0"	5'-0"	8'-0"	3'-0"	TEMPERED
C	Fixed	1	3'-0"	10'-0"	10'-0"	0"	
D	Fixed	2	2'-0"	7'-0"	10'-0"	3'-0"	
E	Fixed	1	4'-0"	8'-0"	9'-0"	11'-0"	TEMPERED
F	WD - Fixed	1	3'-0"	6'-0"	8'-0"	2'-0"	
G	WD - Casement-Singe-Left	2	3'-0"	5'-0"	8'-0"	3'-0"	EGRESS
J	WD - Awning	3	4'-0"	10'-0"	10'-0"	0"	TEMPERED
M	Fixed	3	3'-0"	3'-0"	9'-0"	6'-0"	
N	Fixed	1	2'-6"	3'-0"	9'-0"	6'-0"	
N2	Fixed	1	2'-6"	3'-0"	10'-0"	7'-0"	
N3	Fixed	1	2'-6"	3'-0"	9'-0"	6'-0"	
N4	Fixed	1	2'-6"	3'-0"	8'-0"	6'-0"	
P	Fixed	2	4'-0"	5'-0"	8'-0"	3'-0"	
R	Fixed	3	4'-0"	6'-0"	8'-0"	2'-0"	
S	WD - Fixed	2	3'-0"	8'-0"	10'-0"	2'-0"	
S1	WD - Skylight	1	4'-0"	4'-0"			

CURTAIN WALL SCHEDULE				
MARK	LENGTH	OVERALL HEIGHT	AREA	COMMENTS
CW1	8'-2"	10'-0"	81.7 SF	ENTRY
CW2	11 3/4"	10'-0"	9.9 SF	PRIMARY SHOWER
CW3	5'-11"	10'-0"	59.1 SF	PRIMARY SHOWER

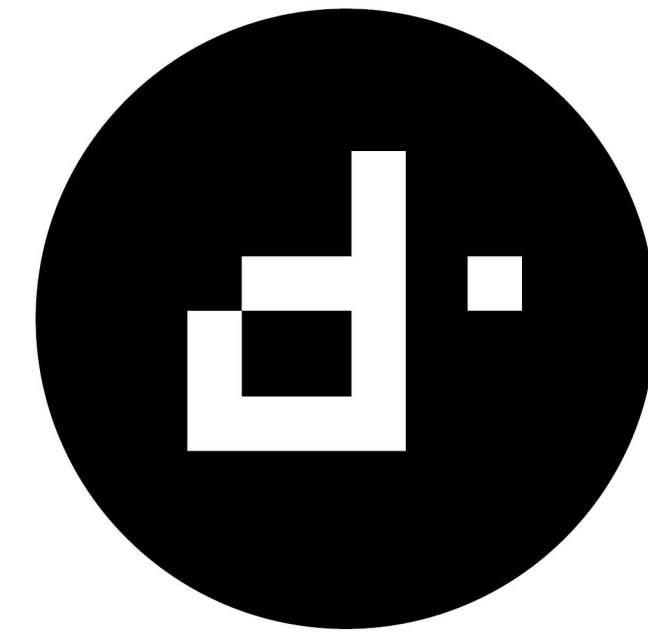
DOOR SCHEDULE				
MARK	COUNT	DOOR SIZE		COMMENTS
		WIDTH	HEIGHT	
100	1	5'-0"	9'-9 1/2"	FRONT GLASS PIVOT DOOR - TEMPERED
101	1	18'-0"	8'-0"	OVERHEAD GARAGE DOOR
102	1	2'-8"	8'-0"	EXTERIOR DOOR
103	1	8'-0"	10'-0"	GLASS SLIDER - TEMPERED
104	1	16'-0"	10'-0"	MULTI-SLIDE GLASS DOOR - TEMPERED
105	1	3'-0"	8'-0"	INTERIOR DOOR
106	1	14'-11 1/2"	9'-11 3/4"	MULTI-SLIDE GLASS DOOR - TEMPERED
107	1	14'-11 1/2"	9'-11 3/4"	MULTI-SLIDE GLASS DOOR - TEMPERED
108	1	2'-6"	6'-0"	EXTERIOR GATE - COURTYARD
109	1	10'-0"	10'-0"	GLASS SLIDER - TEMPERED
110	1	3'-0"	8'-0"	EXTERIOR GLASS DOOR - TEMPERED
111	1	3'-0"	8'-0"	GARAGE ENTRY DOOR - 45-MIN. RATED W/ POSITIVE LATCHING & GASKET
112	1	8'-0"	10'-0"	GLASS SLIDER - TEMPERED
113	1	0"	0"	OPENING
114	1	2'-6"	8'-0"	INTERIOR DOOR
115	1	3'-6"	8'-0"	INTERIOR DOOR
116	1	3'-0"	8'-0"	INTERIOR DOOR
117	1	3'-0"	8'-0"	INTERIOR DOOR
118	1	2'-6"	8'-0"	INTERIOR DOOR
120	1	2'-6"	8'-0"	INTERIOR DOOR
122	1	3'-0"	8'-0"	INTERIOR DOOR
123	1	3'-0"	8'-0"	OPENING
124	1	3'-0"	8'-0"	INTERIOR DOOR
125	1	2'-8"	8'-0"	INTERIOR DOOR
126	1	2'-8"	8'-0"	INTERIOR DOOR
127	1	3'-0"	8'-0"	INTERIOR DOOR
129	1	5'-0"	8'-0"	INTERIOR BARN DOOR
131	1	3'-0"	8'-0"	INTERIOR BARN DOOR
132	1	2'-6"	8'-0"	INTERIOR DOOR

DOOR SCHEDULE				
MARK	COUNT	DOOR SIZE		COMMENTS
		WIDTH	HEIGHT	
201	1	16'-0"	8'-0"	MULTI-SLIDE GLASS DOOR - TEMPERED
202	1	0"	0"	OPENING
203	1	2'-8"	8'-0"	INTERIOR DOOR
204	1	2'-8"	8'-0"	INTERIOR DOOR
205	1	2'-6"	8'-0"	INTERIOR DOOR
206	1	3'-0"	8'-0"	INTERIOR DOOR
207	1	2'-6"	8'-0"	INTERIOR DOOR
208	1	3'-0"	8'-0"	INTERIOR DOOR
209	1	2'-6"	8'-0"	INTERIOR DOOR
210	1	2'-6"	8'-0"	INTERIOR DOOR

ELEVATION KEYNOTES

- 36" MIN. HEIGHT GUARDRAIL W/ 4" MAX VERTICAL SPACING OF HORIZONTAL RUNGS. GUARDRAIL TO SUPPORT 200# CONCENTRATED LOAD / 50# UNIFORM LOAD PER IRC 2018 R312.1.
- 4"x6" MIN. METAL THRU-WALL ROOF SCUPPER W/ DOWNSPOUT.
- 4"x6" MIN. METAL THRU-WALL SCUPPER.
- EXTERIOR STUCCO SYSTEM (TYP) PER ICC-ES REPORT ESR-1471 OVER 1" INSULATION BOARD AND WEATHER BARRIER (DUPONT TYVEK STUCCO WRAP PER ICC-ESR 2375).
- MASONRY VENEER PER ICC-ES REPORT ESR-4330.
- EXTERIOR WOOD OR FIBER CEMENT RAINSCREEN WALL SYSTEM (TYP) PER ICC-ES REPORT ESR-3910.
- VELLUX CURB MOUNTED SKYLIGHT PER UNIFORM ICC-ES REPORT ER-0199 TYP.
- CONTROL JOINT TYP.
- BREAK METAL FLASHING AND TRIM
- N/A
- EXTERIOR CMU WALL PER STRUCTURAL.
- DECORATIVE 2"x6", OR SIMILAR, HEMLOCK SHADE FIN. SPACED 6" O.C.
- METAL PANEL SCREEN ON STEEL FRAME.
- N/A
- N/A

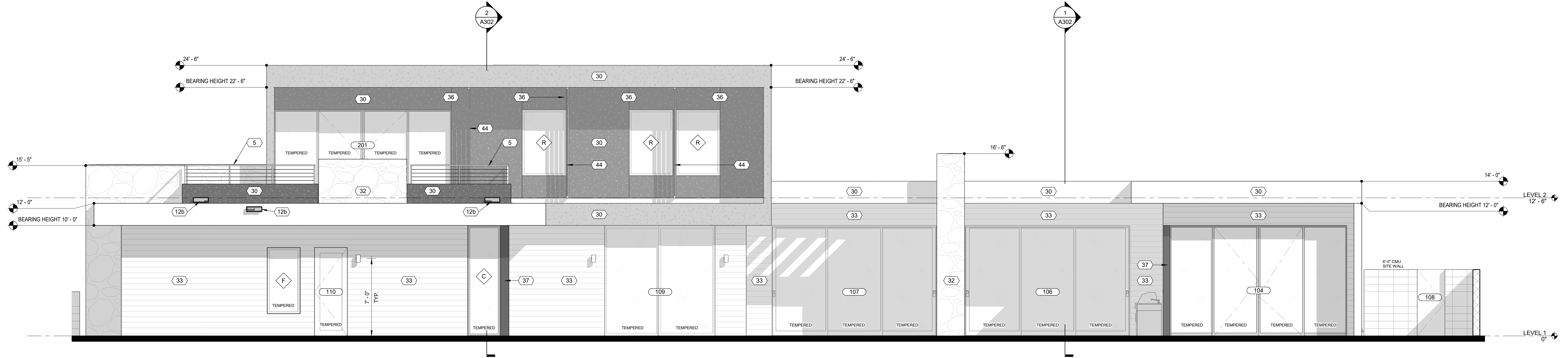
\*NOTE: BUILDING ADDRESS SHALL BE PERMANENT, VISIBLE FROM STREET, AND A MINIMUM 4 INCH HIGH WITH A STROKE WIDTH OF A HALF INCH.



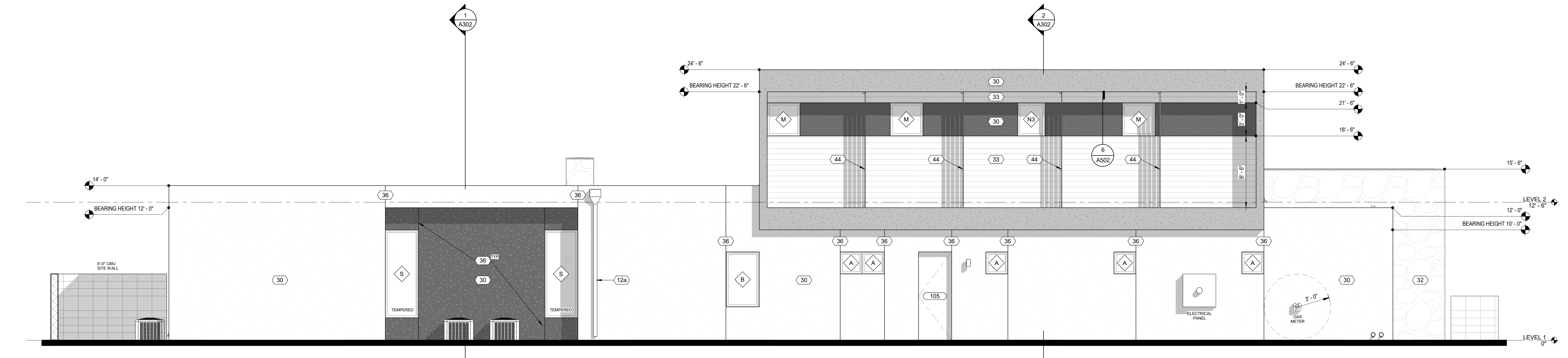
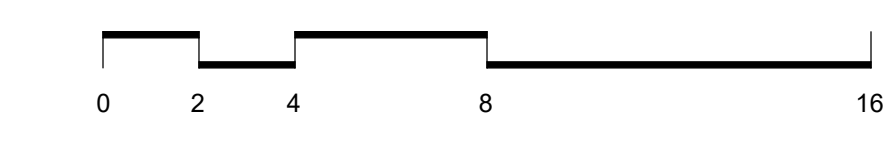
design tank ©  
1640 E BETHANY HOME ROAD  
PHOENIX, AZ 85016  
503.560.5626

CONSULTANT:

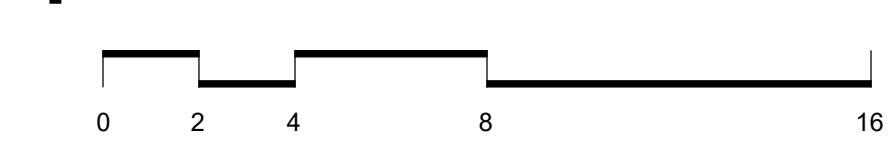
PERMIT SET



2 ELEVATION - EAST (SIDE)  
1/4" = 1'-0"



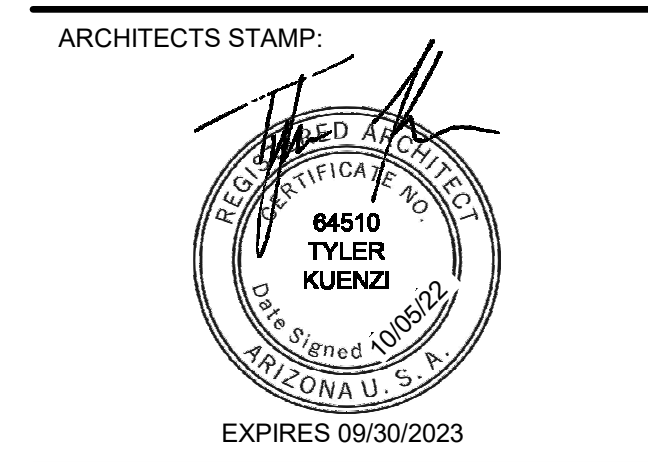
1 ELEVATION - WEST (SIDE)  
1/4" = 1'-0"



TWO STORY RESIDENCE

PALMAIRE 'B'

REVISION	DATE	REASON FOR ISSUE
1	2022-11-17	COP ROUND 1 COMMENTS



BUILDING ELEVATIONS

CITY OF PHOENIX  
Planning and Development Department  
By: Patrick B. Montoya  
01/10/2023  
This set of plans has been reviewed for PHOENIX CONSTRUCTION CODE requirements prior to issuance of Building Permit and shall be kept at the construction site. Such review shall not prevent the Building Official from requiring correction of errors in the plans where such errors are subsequently found to be in violation of any law or ordinance.

DATE	REVISION
2022-1005	1

SCALE  
1/4" = 1'-0"  
SHEET SIZE  
30" X 42"

SHEET NUMBER  
**A202**